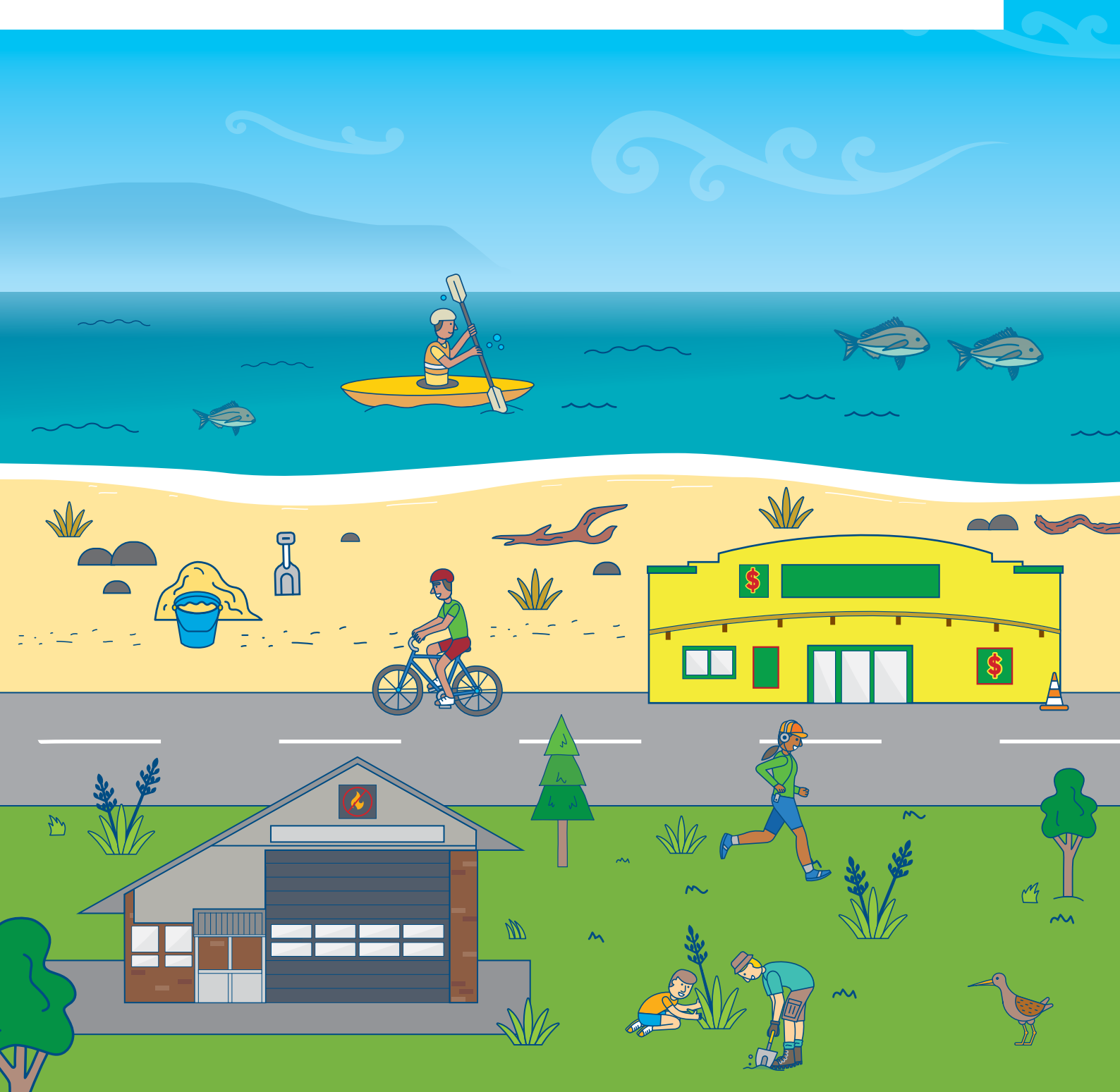


Te Mahere ā-Hapori o Waitārere

Waitārere Beach Community Plan



Te Aronga o tēnei Mahere

Purpose of this plan

The purpose of the Waitārere Beach Community Plan is to outline the aspirations of people who have a connection to Waitārere Beach - because they live there, own a holiday home, or visit often.

The Community Plan is designed to encourage community-led development, enhance collaboration between different groups and identify the community's priorities to inform Council's decision-making processes. The projects identified are reflective of the community's aspirations and do not necessarily have Council funding.

The Waitārere Beach Community Plan:

- Has been developed in conjunction with local iwi based on feedback and ideas from people with a connection to Waitārere Beach.
- Outlines the vision and values of the Waitārere Beach community.
- Identifies four priority areas and associated actions.
- Supports community-led projects.

Community Outcomes

The Waitarere Beach Community Plan supports the wider Horowhenua vision and Community Outcomes.

Council has identified the following Community Outcomes:



The Vision for the Horowhenua District

He rau ringa e pakari ai ngā taura whiri I ō tātou kāinga noho me ō tātou hapori
– mai I te pae maunga o Tararua ki te moana

With many hands the threads which weave our neighbourhoods and communities together will be strengthened from the Tararua Ranges to the sea.

Te Hapori o Waitārere

The Waitārere Beach Community

Waitārere Beach is a small coastal settlement located 10 minutes from Levin. As at 2018, Waitārere Beach has a population of approximately 680 permanent residents, with the population increasing significantly over the summer holiday period.

The Waitārere Beach community has a well-stocked Four Square, takeaways, two camp grounds, a café and restaurant. There are also a number of active community groups such as:

- Club Waitārere
- Levin Waitārere Surf Life Saving Club
- Waitārere Scout Group
- Waitārere Beach Family Fishing Club
- Waitārere Beach Wardens
- Waitārere Beach Progressive and Ratepayers Association

A key feature of the community is the beach, Okatia Beach, which is used for a range of activities such as; swimming, fishing, walking, relaxing, horse-riding, surfing, sailing and photography.



Waitārere Beach



Waitārere Beach was established in 1936 as a result of local development in farming and forestry, and has since become a small beach community. Waitārere Forests, which bound the community to the north and south, were established in 1936 with the aim of protecting inland farmland as well as providing an employment drive during the Depression.

Waitārere is a small watercourse flowing from Te Konganui Lagoon to the Waimakaira Swamp at Poroutawhao. This watercourse is unusual because it flows from west to east, due to the underlying geology of sandstone.

In 1853/54 a Flour Mill was built by Catholic Priest Father Compte in conjunction with local iwi. To secure water needed to power the mill, an artificial channel was cut from Te Konganui Lagoon to achieve a fall of water onto the mill-wheel. This led to the stream becoming known to locals as Waitārere ‘copious flowing water’.

The beach is named ‘Okatia Beach’ after the mythological spirit of Okatia who lived inland but had a strong desire to reach the sea. Okatia did not let anything stop him from reaching his desire, thus carving through the land on his journey, leaving behind the formations of Te Āpiti (Manawatū Gorge) and the Manawatū River. These formations remain as reminders of the power of Okatia, and his relentless desire to reach the sea where he was never seen again.



The dune system at Waitārere Beach is geologically diverse, with three main dune systems. The oldest dunes are approximately 4,000 – 2,000 years Before Present (BP) and are located landward of the Waitārere Beach Settlement. Located to the north of Waitārere Beach Road is an area of dunes formed approximately 500 years BP. The newest dunes cover the settlement and started to form in the late 1800's.

A significant dune system in the area is the Otororoa Ridge which runs between the Hōkio Stream and Wairarawa Stream.

The dunes continue to move today, particularly noticeable is the seaward movement of the dunes (accretion), which adds over 1 metre per year to the coastline.

This has resulted in the Surf Life Saving Club building now being located a significant distance from the beach. Recently Council has gained ownership over the accreted dunes in front of the Surf Life Saving Club building which will enable a new building to be constructed closer to the beach.

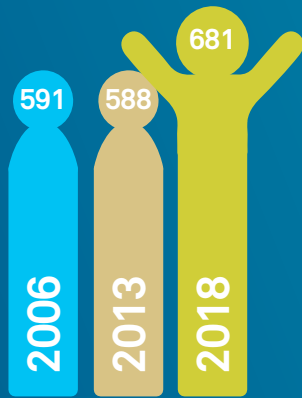
For many years a landmark at Waitārere Beach was the wreck of the Hyderabad ship which deliberately drove into Waitārere Beach in June 1878 after encountering a severe storm. All crew members survived. Now however, the ship has been inundated with sand and can no longer be seen on the beach today.

A stone cairn with a commemorative plaque can be viewed at the entrance to the Waitārere Levin Surf Life Saving Club car park. Holmwood Park was named in commemoration of the Captain of the ship, Captain Charles Holmwood.



Ngā Kōrero mō te Hapori Community Profile

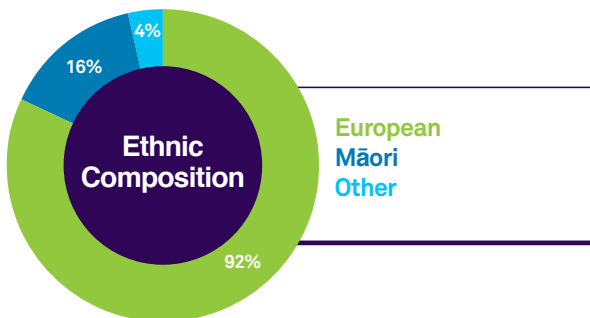
The statistics provided are based on the 2018 Census.



Population

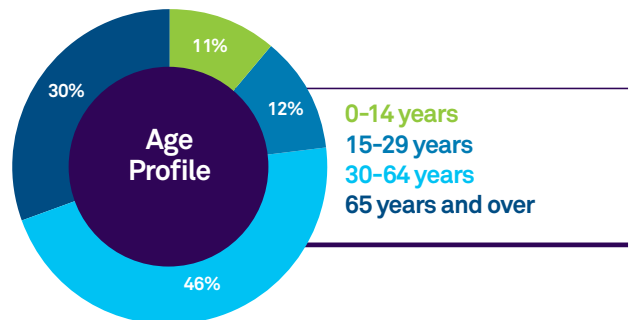
The resident population of Waitārere Beach has been increasing, from 591 residents in 2006 to 681 in 2018.

The population increased by 93 residents in the five years between 2013 and 2018.



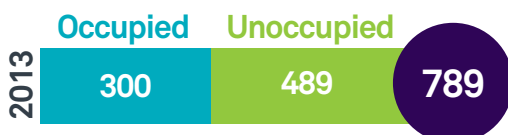
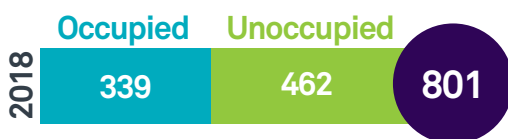
- 92% of the population classifies themselves as European, and 16% as Māori. This compares to the Horowhenua at 81% European and 24% Māori.

Note: Some people can identify as more than one ethnic group.

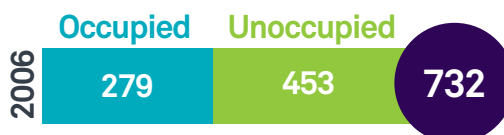


- The majority of the population (76%) are in the age ranges of 30-64 years (46%) and 65 and over (30%).

Dwellings



- The number of dwellings at Waitārere Beach increased between 2006 and 2018, from 732 dwellings to 801 dwellings (an extra 69 dwellings).
- The number of unoccupied dwellings (likely to be holiday homes) has been decreasing over time and was 57% in 2018.

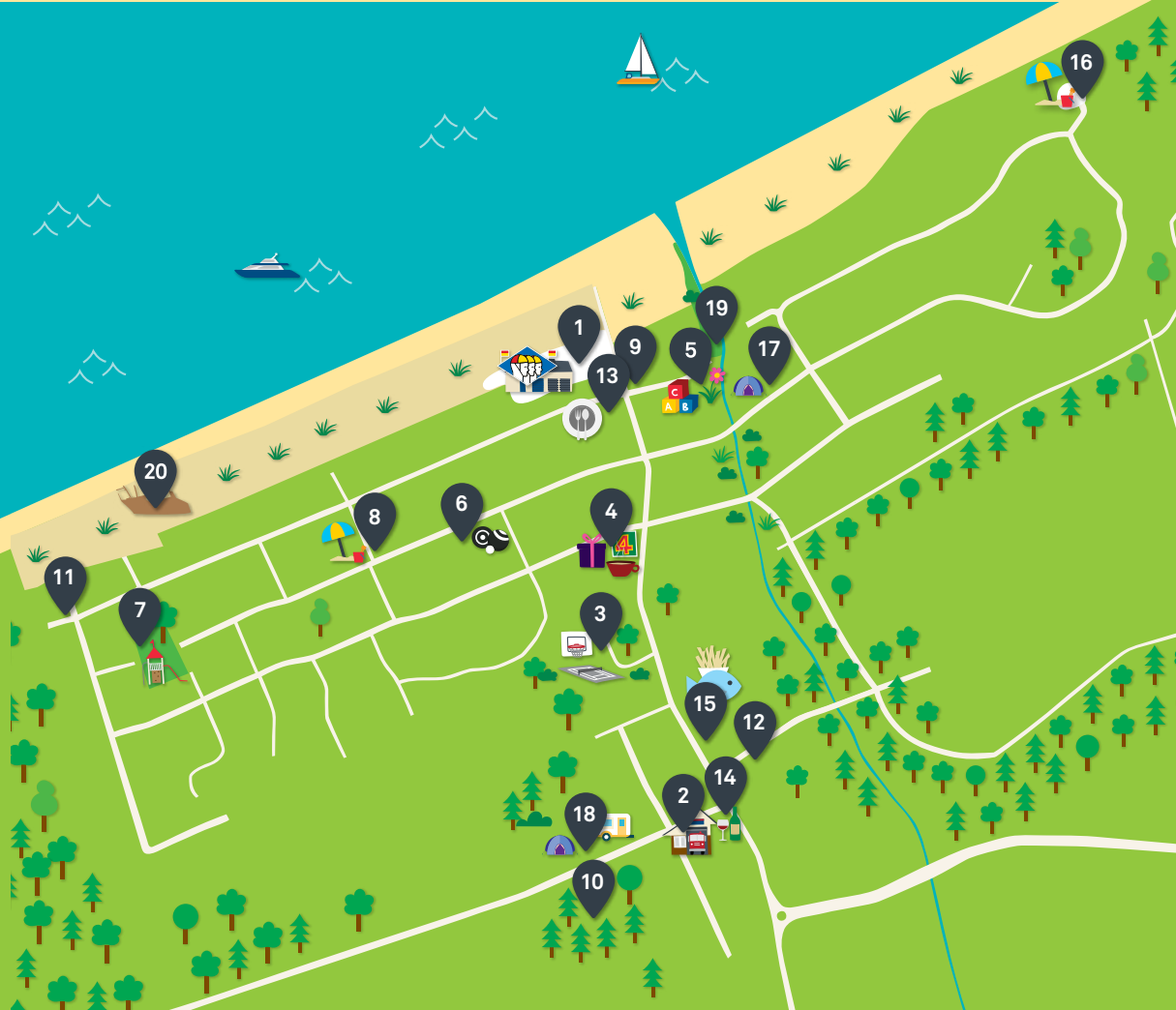


Ngā Takahanga i puta ai te Mahere

Development of the Plan

The Waitārere Beach Community Plan was developed based on engagement with the community. This involved an engagement session with the students from Poroutawhao School, a community

drop-in session, surveys, and hui with local iwi. Over 120 students had their say and over 300 community members participated in the process.



- | | | |
|--|--|---|
| 1 Surf club and car park | 7 Holmwood Park | 14 Liquor Centre bottle store |
| 2 Fire station  | 8 Windsor St. beach entrance | 15 Takeaway |
| 3 Waitārere Domain  | 9 Waitārere Beach Rd. beach entrance | 16 Mairiri Place carpark and beach walkway entrance |
| 4 Local businesses | 10 Forest Rd. South Forest entrance | 17 Waitārere Beach Motor Camp |
| 5 Playgroup, community rooms and community garden | 11 Rua Ave South Forest entrance | 18 Hydrabad Holiday Park |
| 6 Club Waitārere  | 12 Waitārere Beach Rd. North Forest entrance | 19 Hudson Reserve |
| | 13 Restaurant | 20 Hydrabad Shipwreck |



Te Matawhānui Our Vision

Waitārere Beach is a safe, friendly settlement that has a relaxed beach character and lifestyle with a diverse population who know each other.

Ngā Uara Our Values

Kaitiakitanga

We are actively showing guardianship, care and protection for the Waitārere Beach environment.

Whakawhanaungatanga

We are connected and able to form relationships with each other to enhance a sense of belonging to the Waitārere Beach community.

Manaakitanga

We care for, support and value each other in order to foster a sense of community at Waitārere Beach.

Ngā Take Matua - Our Priorities

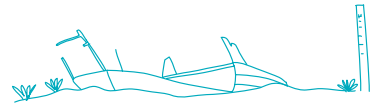
The Waitārere Beach community identified the following priorities. These priorities are consistent with the vision and values the community has for Waitārere Beach.

Te aro ki te āhua ake me te wairua whakawhanaunga o roto i te hāpori o Waitārere.

Recognise the character and the sense of community that makes Waitārere Beach special.



Te takutai, ngā tāhuahua me ngā arawai.
The beach, dunes and waterways.



Ngā rēhia tū-ā-nuku.
Outdoor recreation.

Ngā pūnahahanga e tutuki ai ngā hiahia o te hāpori.

Infrastructure that meets community needs.

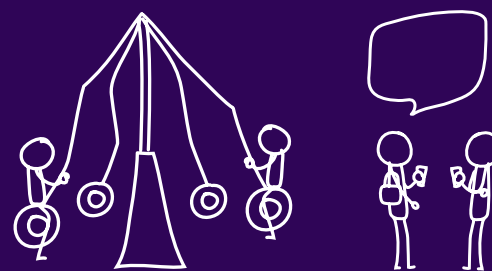


Each priority has actions which outline what, who, when, success indicators and funding. The actions are not an exhaustive list, new actions might be needed or may change over time. While all identified actions are important to the community, the top six most important actions for the community are:

- New Surf Life Saving Club Building.
- Promote the Safe Use of Vehicles on the Beach.
- Keep the Beach Clean.
- Dune Planting, Awareness and Preservation
- Waitārere Domain Improvements
- Increase Understanding of the Waitārere Beach Ecosystem

Te aro ki te āhua ake me te wairua whakawhanaunga o roto i te hapori o Waitārere.

Recognise the character and the
sense of community that makes
Waitārere Beach special.



Thriving
communities



An
exuberant
economy



Vibrant
cultures



Stunning
environment

The community identified that the number one challenge Waitārere Beach faces is growth. The Horowhenua Growth Strategy 2018 identified that by 2040, Waitārere Beach will need an additional 300 dwellings to accommodate projected growth.

Many residents are concerned that this growth will adversely affect the character and lifestyle of the settlement which the community values and wants to protect.

Waitārere Beach is a settlement that has a strong sense of community which is valued by many of the residents. This is shown by the number of residents who volunteer. It is important that the same friendly and connected community that currently exists is recognised and retained as the settlement grows.

Key aspects identified by the community that contribute to the character and sense of community at Waitārere Beach include:

- The residents are friendly and know each other.
- The community still has 'old school' baches and large section sizes.
- The beach.

- The atmosphere has a 'village' and relaxed feel.
- The whole environment including the beach, dunes and waterways and the history of these features.

There is also strong community support for the Levin Waitārere Surf Life Saving Club as a key community organisation.





Actions



Support Local Businesses, Community Groups and Community Initiatives

What

- The Waitārere Beach community will continue to support local businesses, community organisations and community initiatives.
- Council will work with community groups to assist them maximise funding from Council grants and external grants.

Who

- Waitārere Beach Community.
- Horowhenua District Council.
- Waitārere Beach Progressive and Ratepayers Association.
- Local Iwi.

When

- Ongoing.

Success indicators

- Local community groups have stable membership.
- Relevant community groups from Waitārere Beach are aware of grants available (both Council and external) and apply as needed.

Funding

- Council has funding identified in the first 3 years of the Long Term Plan 2018-38 to support Surf Life Saving, Waitārere Beach Wardens and Neighbourhood Support, as well as for Council grants.



Support Local Events

What

- Support the community to deliver local events. This could include supporting community-led events for ANAZC Day & Waitangi Day.

Who

- Horowhenua District Council.
- Waitārere Beach Progressive and Ratepayer Association.
- Local Iwi.
- Waitārere Beach Community.

When

- Ongoing.

Success indicators

- At least one community event is held each year.
- Event attendance is increasing.

Funding

- Staff support will be provided by Horowhenua District Council to support community-led events.



Share Information about Local Groups and Services

What

- Share information with the community about local groups and services (e.g. create a brochure).

Who

- Waitārere Beach Progressive and Ratepayers Association.
- Horowhenua District Council.
- Local Iwi.

When

- July 2020.

Success indicators

- Information about local groups and services has been collated and shared (e.g. a brochure has been created).

Funding

- Staff support will be provided by Horowhenua District Council for the development of the brochure.
- Funding from grants will be sought for external costs (e.g. printing).



New Surf Life Saving Club Building

What

- A new building for the Levin Waitārere Beach Surf Life Saving Club is constructed.

Who

- Levin Waitārere Surf Life Saving Club.
- Horowhenua District Council.
- Local Iwi.

When

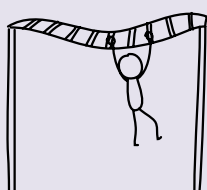
- To be confirmed.

Success indicators

- The Levin Waitārere Surf Life Saving Club building is fit-for-purpose.

Funding

- It is anticipated funding for this project will come from a range of sources, such as external grants and fundraising by the Levin Waitārere Surf Life Saving Club.





Investigate Options for a Community Hub

What

- Investigate the need for, and feasibility of options for establishing a not-for-profit community hub which is multi-use and inclusive. For example: meetings, exercise, local services, pōwhiri and functions.

Who

- Waitārere Beach Progressive and Ratepayers Association.
- Horowhenua District Council.
- Local Iwi.

When

- July 2021.

Success indicators

- The need for and feasibility of establishing a community hub which can be used for a range of local purposes is known.

Funding

- No Council funding has been allocated for this project at this time.



Proactive Planning for Growth

What

- Develop a Master Plan for the growth areas at Waitārere Beach. The Master Plan will take a proactive approach to ensure new development connects with, and complements the character of the existing settlement, acknowledges environmental opportunities and considers whether there is enough commercial zoned land to cope with projected growth.
- Make changes to the Horowhenua District Plan to enable future development in the settlement's growth areas which is consistent with the Master Plan.

Who

- Horowhenua District Council.
- Local Iwi.

When

- April 2020: Master Plan Complete.
- July 2021: District Plan Change Complete.

Success indicators

- The Master Plan is supported by the community.
- Master Plan explicitly considers the impact on the character environment and history of Waitārere Beach and seeks to complement it.
- Plan Change is completed.
- Development is consistent with the Master Plan and is effectively integrated with the existing settlement.

Funding

- Council funding has been allocated in the Annual Plan 2019/2020 and 2020/2021 for the Master Plan and Plan Change.

Te takutai, ngā tāhuahua me ngā arawai.

The beach, dunes and waterways.



Thriving
communities



Stunning
environment



Enabling
Infrastructure



Partnership
with Tangata Whenua

The Waitāre Beach community value the natural environment, including the beach, dunes and waterways. The natural environment is part of what makes Waitāre Beach so special.

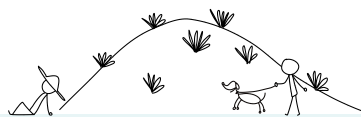
It is essential that the ability for Māori to undertake traditional cultural activities associated with the beach is protected.

The community are interested in being involved in environmental projects to restore and/or enhance the mauri of these areas.

The community has identified they can contribute by respecting the environment, picking up rubbish, keeping to dedicated paths, getting involved in community projects and encouraging others to do the same. In order to be successful kaitiaki (guardians) of the environment, more detailed knowledge of the local ecosystem is required.



Actions



Increase Understanding of the Waitāre Beach Ecosystem

What

Undertake research to understand the local ecosystem, both in the past and in the present, including (but not limited to):

- Streams.
- Dune lakes.
- Dunes.
- Foreshore.
- Shellfish.
- Vegetation.
- Biodiversity.

Who

- Horizons Regional Council.

- Horowhenua District Council.
- Local Iwi.

When

- December 2022.

Success indicators

- There is a common understanding of the local ecosystem, both now and in the past.
- The community are actively educated about the ecosystem.

Funding

- No Council funding has been allocated for this project at this time.



Dune Planting, Awareness & Preservation

What

- Work collaboratively to establish plantings on the dunes which are suitable for the local context (e.g. native plants).
- Increase community awareness and education of the effects of damaging the dunes, vegetation and toheroa.

Who

- Horizons Regional Council.
- Horowhenua District Council.
- Local Iwi.
- Waitārere Beach Progressive and Ratepayers Association.
- Waitārere Beach community.

When

- Ongoing.

Success indicators

- Cross agency collaboration occurs.
- The Waitārere Beach community are involved in planting days.
- The Waitārere Beach community have a greater understanding of the impact of damaging the dunes, vegetation and Toheroa.

Funding

- No Council funding has been allocated for this project at this time.



Keep the Beach Clean

What

- Regular beach clean-up events. Beach clean-up events are an ongoing initiative led by Waitārere Beach Progressive and Ratepayers Association

Who

- Waitārere Beach Progressive and Ratepayers Association.
- Local Iwi.
- Waitārere Beach community.
- Horowhenua District Council.

When

- Ongoing: Monthly.

Success indicators

- Clean-up events are ongoing, with increasing attendance by the community.

Funding

- This is a voluntary initiative run by the Waitārere Beach Progressive and Ratepayers Association.
- Horowhenua District Council provide support through the provision of minor equipment and free rubbish disposal.



Co-Management of the Foreshore

What

- Identify opportunities for the co-management of the foreshore and other open spaces with local Iwi.

Who

- Horowhenua District Council.
- Local Iwi.

When

- Ongoing.

Success indicators

- Opportunities for the co-management of the foreshore and other open spaces are explored.

Funding

- No Council funding has been allocated for this project at this time.



Artwork by student from Poroutawhao School.

Ngā rēhia tū-ā-nuku. Outdoor Recreation.



The community strongly values the outdoor recreation opportunities currently available at Waitārere Beach. The community's top three favourite activities to do at Waitārere Beach are walking, swimming and biking. There is community support for increasing opportunities for walking/biking in the area.

Currently residents use the beach, settlement and adjoining forests for walking and cycling. The forests to the north and south of the settlement are owned by the Crown and have a forestry licence over them. Therefore, use of the area is informal at the discretion of the Crown and forestry licence owners. Further access to or development of the forestry

areas is not currently within the scope of the Waitārere Beach Community Plan.

In addition to the beach, the community has access to two parks for outdoor recreation – Waitārere Domain and Holmwood Park. Waitārere Domain is the most used park, with strong community support for ongoing improvements.

The community is also passionate about vehicle access to the beach. There are mixed views with the community about having a section of the beach near the Surf Life Saving Club free from vehicles during busy periods. The common theme is support for increased safety for beach users.

Actions



Waitārere Domain Improvements

What

- A Development Plan for Waitārere Domain is created and implemented.
- The Development Plan incorporates cultural components designed alongside local Iwi.

Who

- Horowhenua District Council.

- Waitārere Beach Progressive and Ratepayers Association.
- Local Iwi.

When

- April 2020: Waitārere Domain Development Plan completed.
- Ongoing: Implementation of improvements in accordance with the Waitārere Domain Development Plan.

Success indicators

- Ongoing improvements consistent with the Waitārere Domain Development Plan are completed at Waitārere Domain.
- Additional funding could be applied for from external grants to support the implementation of projects identified in the Waitārere Domain Development Plan.

Funding

- Council funding has been identified in years 1 – 8 of the Long Term Plan 2018-2038.



Walking and Cycling Improvements

What

- Ensure the Shared Pathways Network Concept Plan includes pathways for the Waitārere Beach area.
- The top priority is a pathway which runs alongside the road from State Highway 1 to the settlement.
- Cycling and pedestrian safety is considered in all local roading projects.

Who

- Horowhenua District Council.
- Waitārere Beach Progressive and Ratepayers Association.
- Local Iwi.
- NZTA.

When

- Early 2020: Shared Pathways Network Concept Plan complete.

- Long Term: Construction of pathways for the Waitārere Beach area.

Success indicators

- Shared Pathways Network Concept Plan identifies a shared pathway following the road from State Highway 1 to the settlement.
- Pathways are constructed in accordance with the Shared Pathways Network Concept Plan.

Funding

- Council funding is allocated for the development of the Shared Pathways Network Concept Plan.
- No Council funding has been allocated at this time for the construction of pathways in the Waitārere Beach area.



Vehicles on the Beach

What

- Investigate and implement options for increasing safety for beach users, particularly between the two beach entrances (Waitārere Beach Road and Windsor Street).

Who

- Horowhenua District Council.
- New Zealand Police.
- Levin Waitārere Surf Life Saving Club.
- Waitārere Beach Wardens.

- Waitārere Beach Family Fishing Club.
- Waitārere Beach Progressive and Ratepayer Association.
- Local Iwi.

When

- Ongoing: prior to each summer season.

Success indicators

- A collaborative solution for addressing safety issues resulting from the use of vehicles on the beach in the area in front of the Surf Life Saving Club is developed and implemented.

Funding

- Staff support will be provided by Horowhenua District Council to facilitate the investigation.



Future Parks and Reserves

What

- Ensure public outdoor recreation opportunities are planned as part of the development of the Master Plan for the residential growth areas at Waitārere Beach.
- Enable cultural components to be designed alongside local Iwi.

Who

- Horowhenua District Council.
- Local Iwi.

When

- April 2020: Master Plan Complete.

Success indicators

- The Master Plan identifies opportunities for the development and redevelopment of green spaces which provide a strategic network of outdoor recreation opportunities at Waitārere Beach.

Funding

- Council funding has been allocated in the 2019/2020 Annual Plan for the development of the Master Plan.



Artwork by student from Poroutawhao School.

Ngā pūnahahanga e tutuki ai ngā hiahia o te hāpori.

Infrastructure that meets community needs.



The Waitārere Beach settlement is currently provided with a reticulated wastewater network, however, drinking water supply is currently from roof water or water bores.

The community has identified that ongoing maintenance of infrastructure is important.

Mixed interest has been shown by residents for a reticulated water supply, with residents both supportive and opposed to a reticulated system.

Mixed interests has also been shown in relation to additional street lighting. There is support for street lighting to improve safety, however, this needs to be balanced with minimising light pollution.

Additional seating near the Surf Life Saving Club was identified as an area for improvement.

Actions



Reticulated Drinking Water

What

- Complete a feasibility study for a Council provided reticulated drinking water supply.

Who

- Horowhenua District Council.
- Local Iwi.
- Waitārere Beach Community.

When

- July 2020.

Success indicators

- A decision has been made about whether to proceed to the next stage of the project (which would include community consultation).

Funding

- Council funding is allocated in the 2019/2020 Annual Plan for the completion of the feasibility study.



Seating Around Town

What

- Investigate the need for additional seating around the Waitārere Beach settlement.

Who

- Horowhenua District Council.
- Waitārere Beach Progressive and Ratepayers Association.
- Local Iwi.

When

- July 2021.

Success indicators

- The need for additional seating is known, with a plan in place for its construction.

Funding

- No Council funding has been allocated for this project at this time.



Street Lights

What

- Investigate the need for more street lighting throughout Waitārere Beach.

Who

- Horowhenua District Council.
- Waitārere Beach Progressive and Ratepayers Association.
- Local Iwi.

When

- July 2021.

Success indicators

- Safety issues resulting from a lack of street lighting are known, with a plan in place to address any issues raised.

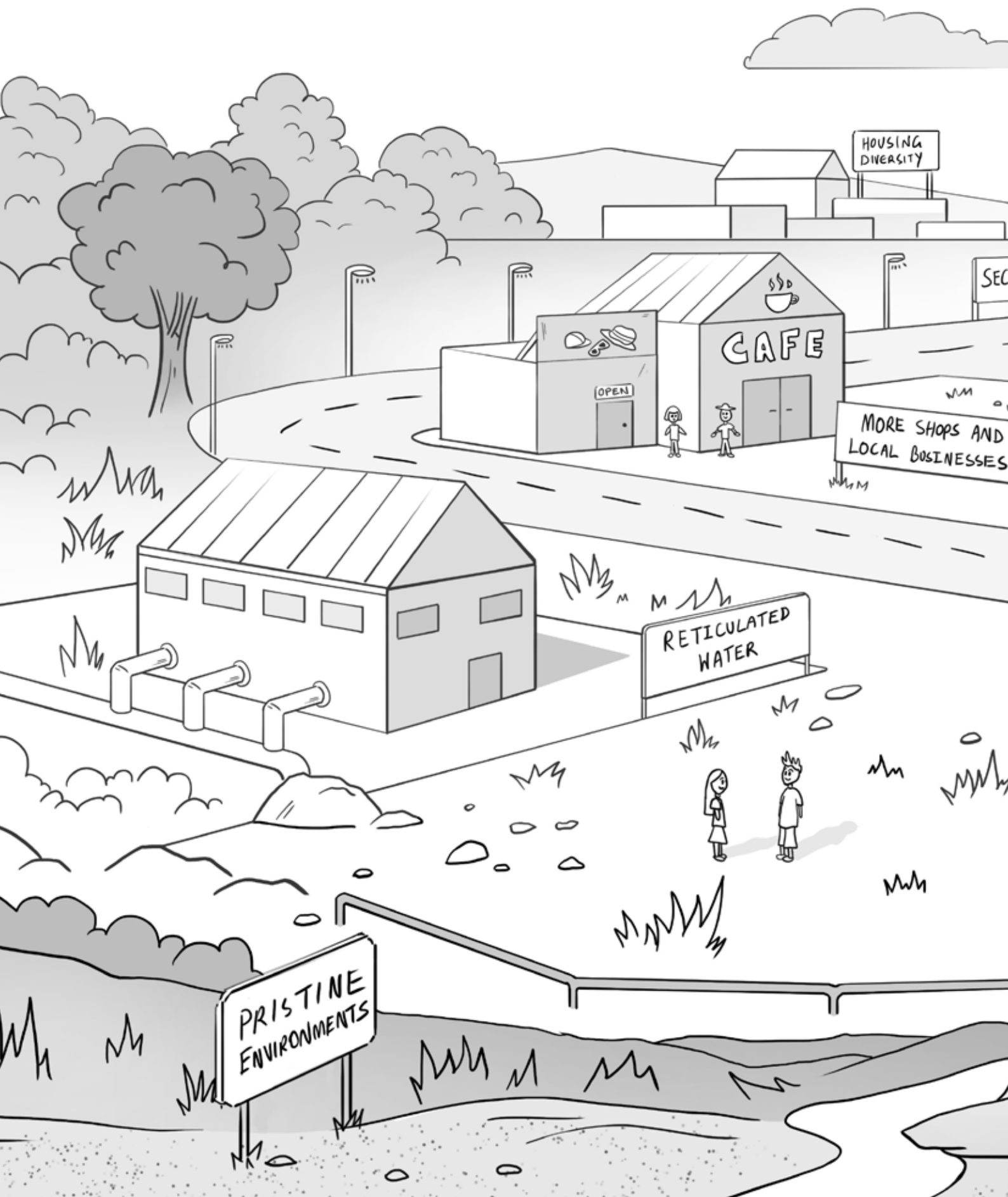
Funding

- No Council funding has been allocated for this project at this time.

Ngā takahanga o muri ake nei Next Steps

Monitoring of progress against the actions identified in the Waitārere Beach Community Plan will be undertaken yearly.

A review of the Waitārere Beach Community Plan will be undertaken during 2024 or earlier if required.



Waitārere Beach has continued to change over the years. In looking back some of these changes now look really significant others have been more gradual, while some things have remained the same.



The conceptual image is designed to prompt some ideas and discussion about what Waitārere might look like in the next 20 years. What are some of those things that might change? Could be needed? or nice to have as Waitārere Beach evolves in the future.

Te whai wāhitanga mai o te hāpori Community Engagement

Thank you to all those who have contributed to the development of this plan.

Partnership with Iwi

The draft Waitārere Beach Community Plan was developed alongside local iwi.

Poroutawhao School Engagement

The students from Poroutawhao School participated in an engagement session on 23 May 2019. The students from the school prepared stories prior to the session which identified what they like about Waitārere Beach and what could make it better. During the session the students shared their stories and ideas which were put on post it notes on aerial maps. An exercise specific to the Waitārere Domain was also undertaken on the same day which will link into the Waitārere Domain Development Plan. Feedback from home was also received about what makes Waitārere Beach special.

Community drop-in session

A community drop-in session was held on 20 July 2019 at the Waitārere Scout Hall located at Waitārere Domain. Members of the community were able to drop by to have a look at the ideas from the students at Poroutawhao School, read information about their local community and Council services and projects, complete a survey, give their thoughts on key questions posed and talk to staff. Over 65 adults attended the session.



Artwork by student from Poroutawhao School.



Survey 1

People with a connection to Waitārere Beach were invited to complete an online survey between 1 July 2019 and 5 August 2019.

The survey included seven questions for the development of the Waitārere Beach Community Plan.

A total of 258 survey responses were received. These responses were analysed alongside the responses from the Community drop-in session, and resulted in draft priority areas being developed.

Survey 2

A second survey was open from 23 August 2019 to 9 September 2019 and asked questions focused on the draft priority areas which were developed from the first survey. A total of 163 responses were received.

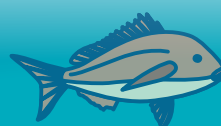
Draft Waitārere Beach Community Plan

A draft Waitārere Beach Community Plan was created and open for community feedback between 18 January 2020 and 14 February 2020.

A Launch Event was held at Waitārere Domain on 18 January 2020, with an estimated 200 community members attending. Community members were able to read the draft Community Plan and were asked to prioritise which actions should be completed first.

A display was set up at Club Waitārere throughout the engagement period, with Council officers available to speak with the community on the evening of 31 January 2020.

A total of 50 community members completed the feedback form which asked questions about the vision, values, priorities and actions.








 enquiries@horowhenua.govt.nz

 www.horowhenua.govt.nz

 HorowhenuaDC

 06 366 0999

 Private Bag 4002, Levin 5540

 126 Oxford St, Levin 5510