

## An aerial photograph showing a large, well-maintained green field, possibly a golf course or sports field, situated between a residential neighborhood and a body of water. The field is bordered by a road on the left and a line of trees on the right. In the background, a wide river or bay stretches towards distant hills under a cloudy sky. A small building and a parking area are visible on the right side of the field.

The 17 Ha Holben Reserve provides a key open space amenity for residents and visitors in the heart of the Foxton Beach community. Part of the former river channel, the low lying flat site is poorly drained and forms a gateway to the RAMSAR listed Manawatu Estuary.

The site houses a range of community facilities of varying ages and quality. Key elements are annotated on the plan to the right. The concept plan seeks to build on the existing features and complement these with new programs to provide a more integrated and engaging park space suited to all ages and abilities.

Te Wharangi currently reflects very little of its pre-european character and value to local manawhenua. Initially part of the manawatu awa and later a wetland mahinga kai resource, the site would have been regularly used by residents of the Te Wharangi Pa to the east and other settlements. Restoring and revealing these values are a key opportunity of the project

The 0.85 sq.km Te Wharangi catchment is predominantly urbanised which provides a potential source for a range of pollutants and increases the waterway flow variability or 'flashiness' in response to rainfall events. The high water table and low lying nature of the site in close proximity to the estuary is also expected to result in a degree of tidal influence on water levels. A key priority for the project will be to maintain healthy water quality within the reserve and ensure discharges to the Manawatu Estuary meets or exceeds national water quality guidelines through capture and treatment of pollutants in the proposed wetland system.



A horizontal timeline illustrating the design process from 2016 to 2020. The timeline is represented by a dotted line with a green arrow pointing to the right. Key milestones are marked with teal circles containing text, and descriptive labels are connected to these milestones by dotted lines.

- 2016**: 2016 Master Plan
- EARLY 2020**: Initial concept design process
- JUNE 2020**: Workshops with stakeholder groups to test initial concepts
- AUG 2020**: Refined concept formed & reviewed via public open house + survey
- SEPT 2020**: Public open house and engagement summary formed
- NOV 2020**: Concept finalised & funding application



WHAT YOU TOLD US? ENGAGEMENT SUMMARY

PURPOSE OF ENGAGEMENT

This engagement process has been delivered as part of the development of a concept plan for the Te Wharangi/Holben Reserve in Foxton Beach.

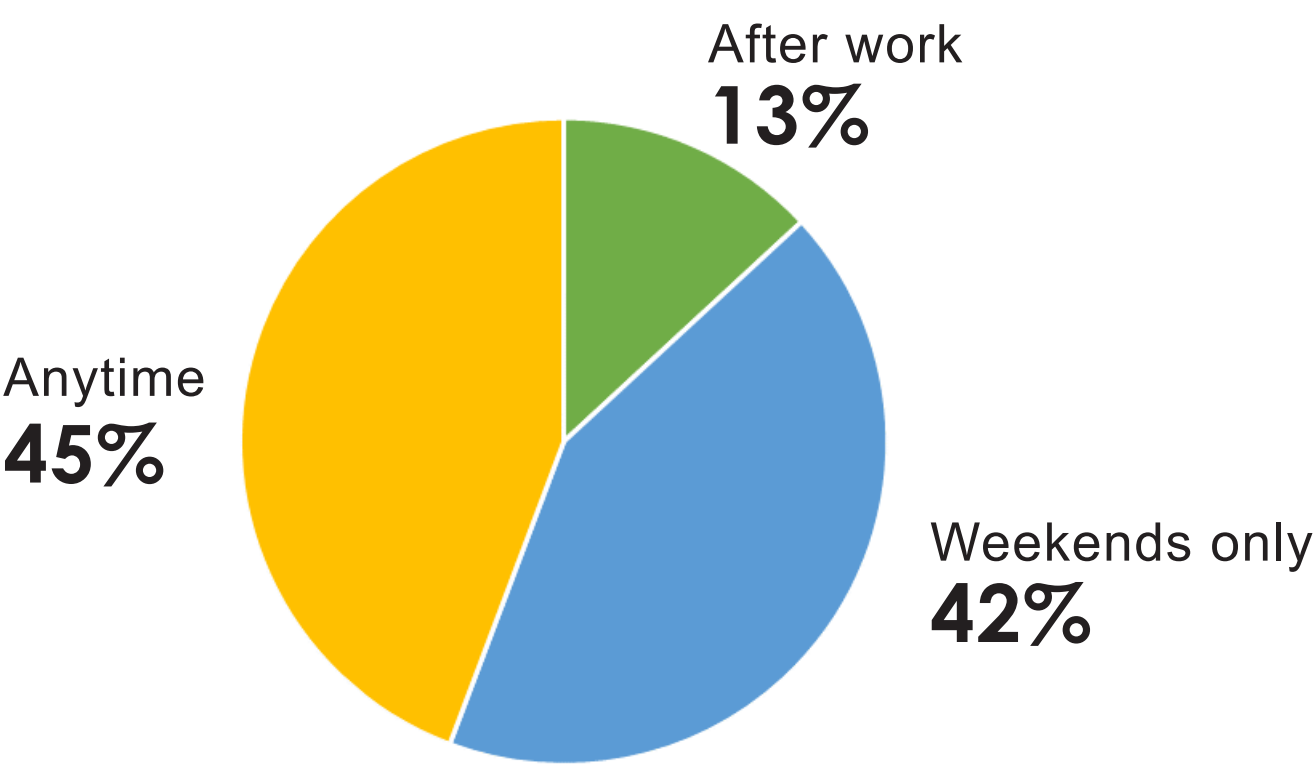
Interviews with 8 different stakeholder groups were conducted over June & July 2020 with feedback guiding revisions to the initial concept plan over July and August. A broader public engagement process was conducted to socialise the proposed concept in mid August.

FEEDBACK THEMES

Overall there was a high level of support for the proposal aside from some points of concern around specific detail elements of the project.

A common theme of what Te Wharangi meant to the people was a centre piece of recreation and community activity for Foxton Beach. Many of the comments revolved around a safe, diverse space for families and fun to occur.

The reserve space was shown from the survey to be used extensively by the surrounding community with 45% of respondents saying they would use the reserve space anytime.



SAMPLE COMMENTS

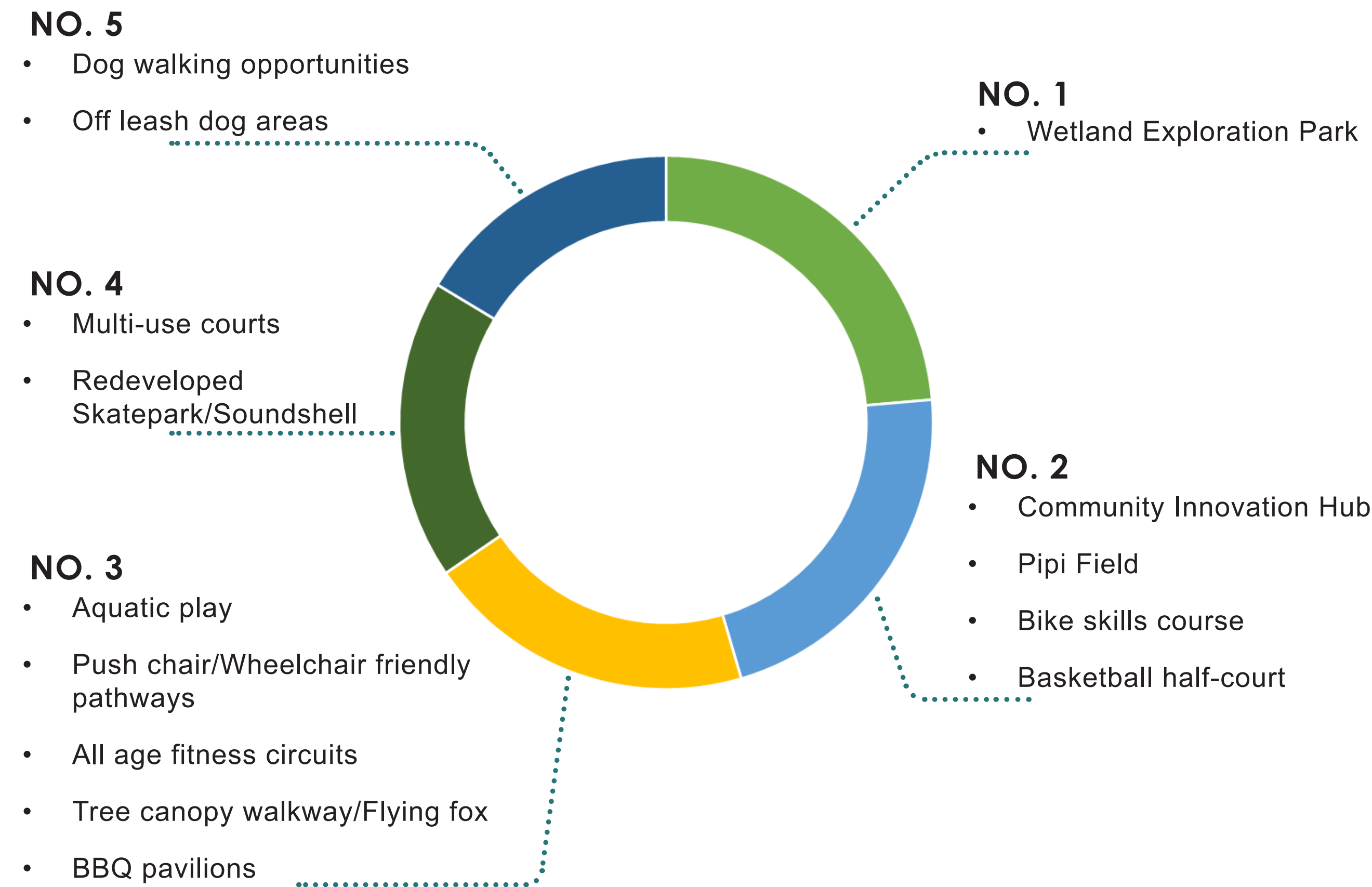
“The Reserve development as proposed, would make far better use of the space and existing environment, to provide a wide range of recreational facilities for a growing resident population.”

“A fabulous natural environment that is used by the community.”

“A place where all ages can enjoy themselves with family and friends. A place that families would use frequently”

TOP 5 SUGGESTED FEATURES OF THE CONCEPT DESIGN

People who undertook the survey were asked to rank their top five suggested features of the concept design. These results can be seen summarised below:



KEY CONCERNS AND CONSIDERATIONS

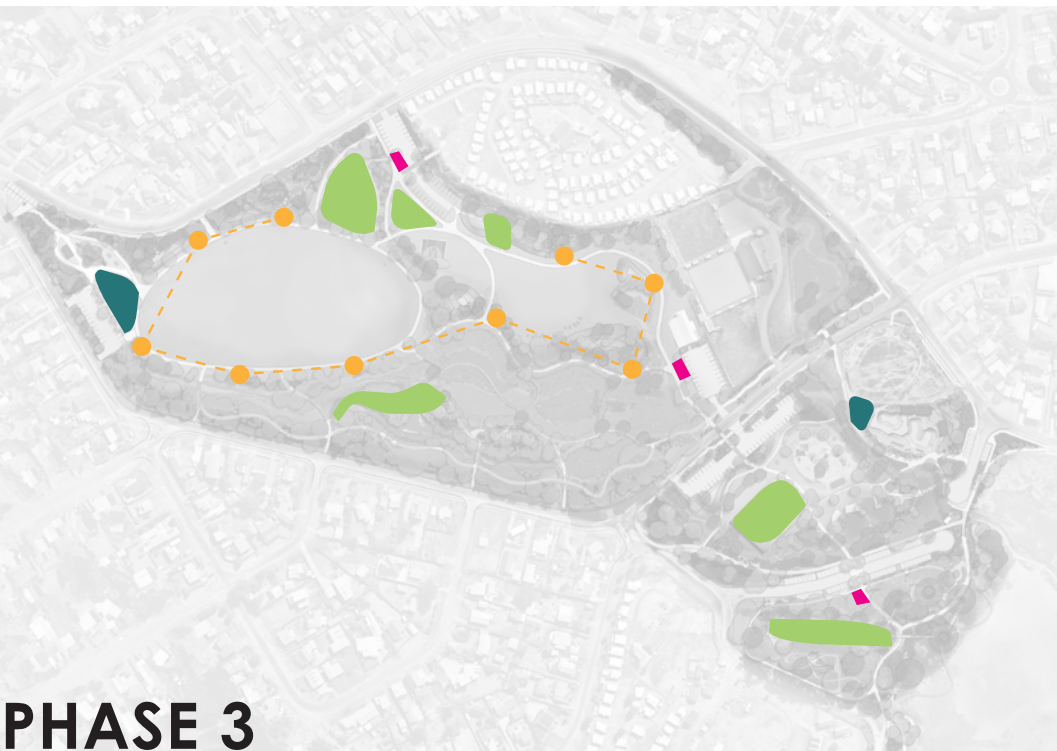
- Neighbours facing proposed parking and youth activity areas of Bond Street. Concerns were raised over amenity, noise and anti-social impacts around parking, toilets and basketball court. This has been addressed through a redesign of this area.
- Traffic measures and management around the reserve. Needs to be addressed to ensure safety concerns. This has been referred to the HDC transport team.
- Provide accessible pathways and facilities throughout the park. This will be part of a key design requirement in future stages of the design.
- Maintaining suitable water quality and safe management around proposed aquatic play area. Challenges around whether this is appropriate use of funds given proximity to the beach.
- Water quality and nuisance insects in wetland areas. This will be a key design requirement in the next stage of detailed design and engineering to ensure a healthy, attractive and functioning wetland system is achieved.



OVERALL CONCEPT PLAN



PHASING STRATEGY



Parking and play elements, skate-park and water-park.



CONCEPT - VILLAGE GREEN

The existing open grass area is formalised with planting and topography to frame a central multi use field suitable for informal recreation, outdoor concerts and community events.

Soil excavated from the wetlands are used to for a variety of topography through the site and improve shelter from the coastal winds.

The renovated Pavilion building forms a multi-purpose 'Innovation hub' equipped with technology and learning resources for community use.



FITNESS STATIONS (6)



WETLAND ADVENTURE TRAIL (11)



IMPROVED WALKWAYS



NATIVE PLANTING & TEXTURES



BASKETBALL HALF-COURT (4)



PIPI LAWN FESTIVAL





CONCEPT - WETLAND EXPLORATION PARK  
& YOUTH ACTIVITY AREA

The existing underused BMX track is decommissioned and replaced with a mountain bike skills area with jumps, technical structures and other obstacles with challenges for all abilities.

The main wetland area combines function with exploration and learning opportunities. A range of focal point structures draw visitors through a succession of wetland types and blend art with cultural and ecological learning



PLAY INTEGRATED WITH RAISED LANDFORM (1)



BIKE SKILLS AREA (2)



WILDLIFE WATCHING (8)



ENHANCED WATERCOURSE (5)



WETLAND PLANTING (6)



TUNA/EEL FEEDING PLATFORM (11)





CONCEPT - SOUTHERN PARK

The southern park clusters activities to appeal to family groups. Extensive planting and berms are used to frame the play spaces and two new BBQ Pavilions offers a venue for family gatherings and events.

The existing pond is reshaped with vegetated banks and wetland vegetation. A water play area adjacent provides opportunity for a bomb tower and splash pad. This will require further feasibility and safety study.

South of this a Māra Hūpara nature play area is proposed complete with a tree top walkway and 50m long twin zip-lines.



BBQ SHELTERS (6)



UPGRADED SKATE-PARK/  
INTEGRATED ART (10)



WATERPLAY (2)



MANU TOWER (3)



MĀRA HŪPARA NATURE PLAY (11)



TREE TOP WALKWAY (8)



- KEY**
- 1. Section of road removed and restored into native planting
  - 2. Water play area with shadesails
  - 3. Water play area with manu/bomb tower
  - 4. Feature bridge improved water control structure for fish passage
  - 5. Estuary information kiosk
  - 6. BBQ pavilions
  - 7. Multi-use trail (Bike & Pedestrian)
  - 8. Tree canopy walkway & platforms with slides, fireman poles & rope swings.
  - 9. Flying fox
  - 10. Soundshell redeveloped as Coffee Kiosk.
  - 11. BMX bike terrain course
  - 12. Estuary boardwalk



## NEXT STEPS:

- Funding application for Phase 1 and 2 works submitted
- Site survey currently underway (ground and UAV)
- Proposed formation of 'Friends of Te Wharangi' to assist in moving the project forwards
- Further designed development with Iwi and stakeholders
- Engineering investigations and refined cost estimates for wetland works
- Consent Applications
- If funding is available for construction, proceed with
  - Detailed design and specifications
  - Tendering
  - Construction of wetland
- As further funding becomes available in the future other improvement projects will be progressed – no set timeframes at this stage.
- Additional opportunities for community engagement and participation will be included as part of each project phase
- Key projects such as Pavilion renovations, skate park upgrades and waterplay areas will need to go through further feasibility studies to consider cost/benefit values to community.

