



Education Action Plan

2019-2020



There are four priority streams of work identified:

Foundation in Early Childhood

Student Success in Schooling

Māori and Pasifika Success

Transition Pathways (Pathways through education to employment)

A young person's education begins long before their first day at school. Students need to leave school with foundational numeracy and literacy levels.

A single approach to student achievement fails our Māori and Pasifika students. Culturally responsive approach to all learning.

Education needs to maintain line of sight with the labour market to allow for smooth lever transitions into education or employment.

Rate of children accessing 6 months or more of quality Early Childhood Education.

Percentage of youth achieving NCEA Level 1 Literacy and Numeracy.

Māori and Pasifika students aged 18 years old that have achieved NCEA Level 2 or higher.

The number of 18 year olds to have achieved NCEA Level 2 or higher. Long term NEET (16-24 year olds not in Education, Employment or Training).

Rate at last review (end 2014)

97.3%

**81.8% Literacy
79.3% Numeracy**

66.4% Māori, 60.6% Pacific

74%

23.4%

Current rate (end 2017)

95.9% (2016)

**83% Literacy
79.3% Numeracy**

81.8% Māori & Pacific

81.6%

17.9%

Action Plan Target (from MOE 2017-18)

98%

85%

85%

11.6%

Strategic Response by Education Horowhenua Representatives

To create pathways into, through and out of schools in Kahui Ako, by providing quality education within students' local geographic area, and by supporting strong transition relationships between Early Childhood and primary and between primary and secondary.

To develop and sustain teachers' knowledge and use of innovative teaching and learning strategies to increase student engagement in their own learning.

To support whānau and families to nurture their children's wellbeing through supportive and collaborative relationships between home and school and through an ongoing focus on holistic wellbeing.

- Deploy a progressive harmonic education-employer approach to transitioning.

- To create pathways, by providing quality education within students' local geographical area, and by supporting strong transition relationships into employment.

- Support up-skilling of educators and employers.
- Support collaboration in Adult Education sector to ensure an abundance of opportunities.
- Monitor education and employment destination outcomes for school leavers.

- Horowhenua Early Childhood Network re-established through COL.
- Training and support to ECE providers.
- Horowhenua Pacific Education Initiative (HPEI) programme supported and acknowledged.
- Transition of the ECE network COL into wider Kahui Ako.

- Te Hinaki trust continues to assist digital pedagogy in schools.
- Educational, technological and study space facilities at Te Takeretanga o Kura-hau-pō and Te Tuahou.
- Implementation of 'Community of Learners Strategy' (HCOL).
- Established House of Science Horowhenua.

- Arts and Cultural Programmes such as Jandai Jam and Kapa Haka Festival.
- Pasifika Talanoa.
- Rangatahi Ora across the COL.
- Iwi involvement in Education Horowhenua strengthened.
- Support and contribute to Iwi Education plans.
- Implementation of 'Community of Learners Strategy' (HCOL).

- Growth and leverage of the Gateway programme.
- Future education, expos and events.
- Pathways Horowhenua Initiative led collaboratively by high schools.
- Drivers Licencing programme.
- Youth guarantee programmes.
- Community education and seminar programmes offered at all community hubs and through capacity building programmes.
- Supporting all collaborative local training opportunities offered by tertiary providers and employers.
- Pathways Horowhenua website and e-services for employment.
- Tertiary scholarships offered by Council as a leadership Model.
- Horowhenua Youth Employability programme developed.
- Collaborative expansion of direct employment opportunities with industry.
- Horowhenua skills and talent hub established.

What actions are currently being taken by stakeholders in Horowhenua to deliver on that Strategy?

Education Action Plan

2019-2020

Horowhenua District Vision Statement

With many hands the threads which weave our neighbourhoods and communities together will be strengthened from the Tararua Ranges to the sea.

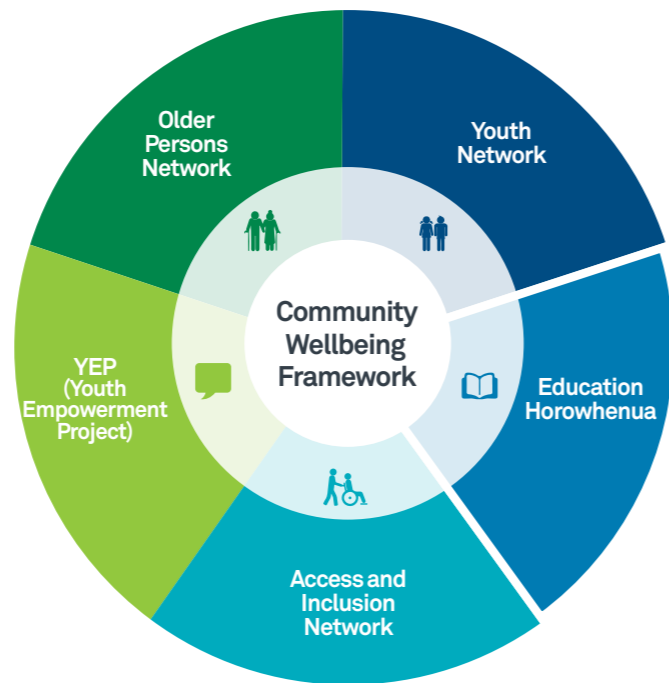
He rau ringa e pakari ai ngā taura whiri i ō tātou kāinga noho me ō tātou hapori – mai i te pae maunga o Tararua ki te moana.

Education Horowhenua Vision Statement

Horowhenua is New Zealand's foremost region in taking joint responsibility for the success of its community through excellent education.

www.horowhenua.govt.nz/education

06 366 0999



What is Education Horowhenua?

Education Horowhenua is a collective of agencies spanning the Education sector, one of seven groups that make up Horowhenua's Community Wellbeing Structure

The group meets regularly as a forum to:

- Establish and nurture a collective impact vision for wellbeing through education
- Coordinate initiatives, identify gaps and plan strategically to strengthen the provision of Education
- Provide a vehicle for Council and government agencies to interact strategically and operationally with education service providers
- Take leadership in accounting for every student in our district

Who makes up Education Horowhenua?

Education Horowhenua is made up of representatives of the following areas, all of which have contributed to this action plan:

- Primary and High School
- Early Childhood
- Pasifika and Māori
- The Ministry of Education
- Horowhenua District Council
- Te Takeretanga o Kura-hau-pō
- Tertiary institutes
- Boards of Trustees
- Vocational Pathways
- Industry
- Youth
- Adult Literacy

Subscribing to a collective impact model of success, Education Horowhenua puts the student at the forefront of its thinking.

<p>All children participate in Te Whariki (curriculum) based quality early childhood education.</p> <p>6 months or more of Te Whariki</p>  <p>1 ECE 2 3 0-4 years old</p>	<p>Students are supported by a community education network that enables academic achievement.</p> <p>Achieving NCEA level 2</p>  <p>School years 5-17 years old</p>	<p>All people are informed and empowered to uptake diverse training and employment opportunities.</p> <p>Finding employment or further training</p>  <p>Transition to employment, higher education 18+ years old</p>	<p>Adults have access to diverse and enriching lifelong learning opportunities</p> <p>Lifelong learning Ongoing</p> 
--	--	---	--

How can I get involved?

It takes a community to raise a child. You can take a stand and get involved in a multitude of ways, from volunteering at a kindergarten or at Te Takeretanga o Kura-hau-pō, standing as a trustee for a school board. Young learners have excellent opportunities too, such as YEP (Youth Empowerment Project), our district Youth Council.

Find out more at www.horowhenua.govt.nz/education