

# Community Connection

Issue 231 DECEMBER 2025



Bernie Wanden

## Message from the Mayor

**Kia ora Horowhenua,**

As we come to the end of 2025, I've been reflecting on the moments, both big and small, that made this year such a good one for Horowhenua.

Our Christmas Parade and Carnival was certainly among the highlights. The streets were alive with colour and music, and the creativity of the floats, along with the huge smiles from families and children, made it a day to remember. A big thank you to everyone who helped make it happen. These events take teamwork and community spirit, and that spirit was on full display.

Another standout was our first Council Expo. The feedback from both officers and Councillors was overwhelmingly positive. People stopped in for conversations, asked thoughtful questions, and got a real sense of the breadth of work Council delivers. Experiences like that reinforce how important it is that we remain open, available, and connected to our community.

We also celebrated some remarkable locals at our Civic Awards and Youth Excellence Awards. This is always a special occasion for both myself and Sharon. This function is more than a celebration, they are a reminder of the generosity, talent and commitment that exist in every corner of our district. Our volunteers, in particular, continue to be the steady hands and big hearts of Horowhenua. Whether you helped at an event, supported a club, mentored a young person, or offered your time in any way — thank you. Your efforts truly matter and help make Horowhenua a place we're proud to call home.

The adoption of the Shannon Community Plan was another key milestone for 2025, shaped by the ideas and aspirations of Shannon residents. And together with Palmerston North City Council and Rangitikei District Council, we've made steady progress on developing Central Districts Water, ensuring our water services will remain strong and locally guided. Confirming the new governance framework this month was an important step forward, keeping local decision-making at the heart of how our water services are managed.

Throughout the year, Council teams continued delivering essential work and making solid progress on key projects across the district including the opening of Levin Domain, now a wonderful space for everyone to enjoy throughout the day. It was also great to see so many residents share their views on local plans and projects. Your voice helps shape the direction of our work and strengthens every decision we make.

As we head into the holiday season, I hope you can take some time to rest, enjoy the sunshine and spend time with those who matter most. Please travel safely and look after one another.

Thank you for being part of a great year in Horowhenua. I look forward to all we can achieve together in 2026.

Meri Kirihimete and warm wishes for a happy 2026.

Mayor Bernie Wanden

## Council Meetings



### Council Meeting

Wednesday 4 February 2026, 10am  
Council Chambers, 126 Oxford Street, Levin  
(Live streamed)

Meeting dates and times are subject to change. Please refer to [horowhenua.govt.nz/Council/Council-Meetings](https://horowhenua.govt.nz/Council/Council-Meetings) for the full meeting schedule, minutes and agendas.

## Water conservation measures are now in place around our district.

Please check [horowhenua.govt.nz](https://horowhenua.govt.nz) for details



**Water conservation measures in place from 15 December**

## Meri Kirihimete Horowhenua



**Wishing you a safe and happy festive season**

Mayor Bernie Wanden and Chief Executive Monique Davidson



## My Favourite Thing About Horowhenua Is...

At the Council Expo, we invited our young people to draw their favourite thing about the Horowhenua.

We received some lovely entries, and while we couldn't publish them all, 11-year-old Riley Horner created this piece, which we're featuring in this edition of Community Connection.



In the Works

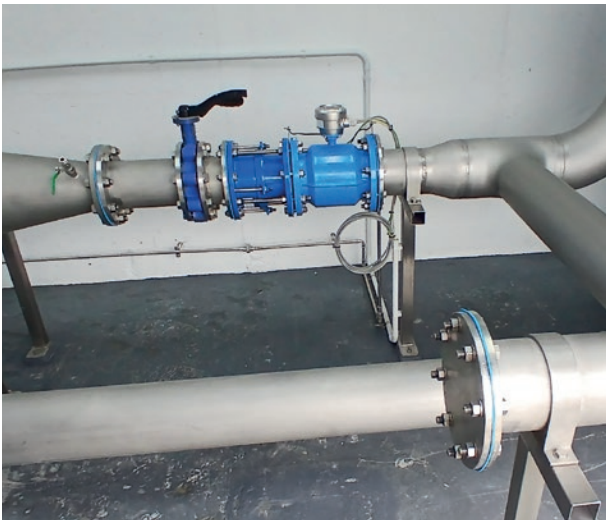
Foxton Water Treatment Plant Upgrades

We're continuing work to strengthen Foxton's drinking water supply, with \$600,000 invested in upgrades through 2025–2026.

A 500,000-litre reservoir has now been commissioned, increasing on-site storage by around 30% and improving resilience during high-demand periods.

A new UV disinfection system has also been installed to provide an extra layer of protection for drinking water. We're now investigating long-term options to address declining output from the Lady's Mile bore and ensure Foxton's water supply remains reliable into the future.

[horowhenua.govt.nz/FWTP](https://horowhenua.govt.nz/FWTP)



Inflatables & Hydro slide

11am - 4pm  
Every weekend



06 368 0070  
AquaticsHorowhenua  
aquatics.horowhenua.govt.nz



Christmas and New Year Opening Hours and Services 2025–2026

Horowhenua District Council

Civic Building – 126 Oxford Street, Levin

Monday 22 December and Tuesday 23 December	9am to 5pm
Wednesday 24 December to Sunday 4 January 2026	CLOSED
Normal opening hours resume on Monday 5 January 2026	

Community Facilities / Libraries

Te Takeretanga o Kura-hau-pō - Levin

Monday 22 December and Tuesday 23 December	9am to 5.30pm
Wednesday 24 December to Sunday 4 January 2026	CLOSED
Normal opening hours resume on Monday 5 January 2026	

Te Awahou Nieuwe Stroom - Foxton

Monday 22 December and Tuesday 23 December	9am to 4pm
Wednesday 24 December to Sunday 4 January 2026	CLOSED
Normal opening hours resume on Monday 5 January onwards	

Shannon Library - Shannon

Monday 22 December and Tuesday 23 December	1pm to 5pm
Wednesday 24 December to Sunday 4 January 2026	CLOSED
Normal opening hours resume on Monday 5 January 2026	

Aquatic Centres

Levin Aquatic Centre

Monday 22 December and Tuesday 23 December	6am to 9pm
Wednesday 24 December	6am to 1pm
Thursday 25 December and Friday 26 December	CLOSED
Saturday 27 December and Sunday 28 December	10am to 6pm
Monday 29 December and Tuesday 30 December	8am to 6pm
Wednesday 31 December	6am to 1pm
Thursday 1 January and Friday 2 January 2026	CLOSED
Saturday 3 January and Sunday 4 January 2026	10am to 6pm
Normal opening hours resume on Monday 5 January 2026	

Foxton Pools

Monday 22 December and Tuesday 23 December	6am to 7pm
Wednesday 24 December	Closes at 1pm
Thursday 25 December and Friday 26 December	CLOSED
Saturday 27 December and Sunday 28 December	10am to 6pm
Monday 29 December and Tuesday 30 December	8am to 6pm
Wednesday 31 December	Closes 1pm
Thursday 1 January and Friday 2 January 2026	CLOSED
Saturday 3 January and Sunday 4 January 2026	10am to 6pm
Normal opening hours resume on Monday 5 January 2026	

Shannon Pool

Monday 22 December and Tuesday 23 December	6am to 7pm
Wednesday 24 December to Friday 26 December	CLOSED
Saturday 27 December to Tuesday 30 December	1pm to 6pm
Wednesday 31 December to Friday 2 January 2026	CLOSED
Saturday 3 January and Sunday 4 January	1pm to 6pm
Normal opening hours resume on Monday 5 January 2026	

Jubilee Park Splash Pad – Levin

Open daily	9am to 7pm
------------	------------

Dog Pound

CLOSED to the public. For urgent matters please call 06 366 0999

Cemeteries

For all cemeteries district wide, a Sunday and public holiday fee applies to all interments on Sundays and public holidays with the exception of Christmas Day, Boxing Day and New Year's Day when no interments are permitted.

Recycling and Rubbish Collection

Christmas and New Year Kerbside Recycling and Rubbish Collection

Kerbside collection will continue as normal, except for Christmas Day and New Year's Day. The Thursday 25 December kerbside collection will take place on Saturday 27 December. The Thursday 1 January 2026 kerbside collection will take place on Saturday 3 January 2026

All other collections will be on their normal days.

Please be aware collection times may vary. Please have bags, wheelie bin and glass crates out by 7.30am on your collection date.

Permanent Waste Transfer and Recycling Stations

Opening hours as normal, except for:

Levin

Public Holiday hours from 8am to 4.30pm. CLOSED on Christmas Day and New Year's Day.

Foxton

Normal hours on all other days. CLOSED on Christmas Day and New Year's Day.

Shannon

No change to normal opening hours.

Beach Recycling Stations

Foxton Beach

Available only from mid-December 2025 to mid-March 2026

Waikawa Beach

Available from mid-December 2025 to early January 2026. No recycling before 8am or after 6.30pm

All other Recycling Stations have 24-hour access

For more information, visit [horowhenua.govt.nz/ChristmasHours](https://horowhenua.govt.nz/ChristmasHours) Or give us a call on 06 366 0999