

Te Mahere ā-Hapori o Ōhau

Ōhau Community Plan

October 2020



Te Aronga o te Mahere me ngā Hononga Rautaki Purpose of the Plan and Strategic Alignment

The Ōhau Community and Horowhenua District Council have worked together to produce the Ōhau Community Plan. The Plan establishes a common vision for Ōhau and identifies key priorities and actions to achieve this vision. In particular, the Plan focuses on identifying features that require protection, or areas that need improvement to better suit the wants and needs of the Ōhau Community now and into the future.

The Ōhau Community Plan will give the community a voice and will inform Council's planning and decision making for Ōhau. Council will use this document to inform processes such as the Long Term Plan, Reserve Management Plans and District Plan changes. This will help to ensure the Council's

actions align with the Community's aspirations.

The Plan also includes community-led actions. These actions provide an opportunity to enhance collaboration between different groups and boost resilience and capacity within the Community.

Ōhau is currently facing a number of challenges and opportunities, including population growth and the Ōtaki to North of Levin Highway. The Ōhau Community Plan will help to identify ways to make the most of these opportunities and respond to the challenges they will bring. In addition, this Plan is an opportunity to work together to improve community wellbeing.

This is in line with the wider Horowhenua vision for the future and Council's community outcomes:



The Vision for the Horowhenua District

He rau ringa e pakari ai ngā taura whiri I ō tātou kāinga noho me ō tātou hapori – mai I te pae maunga o Tararua ki te moana

With many hands the threads which weave our neighbourhoods and communities together will be strengthened from the Tararua Ranges to the sea.

Te Papa Kāinga o Ōhau me te Taiao Tata

Ōhau Village and Surrounds

Ōhau is made up of a small residential village and a wider rural area. Existing State Highway 1 bisects the village, with the original village located on either side.

Ōhau village has a semi-rural character. The roads have neither kerb and channel nor footpaths. Housing density is relatively low and residential properties generally have substantial landscaping that screens their appearance from the street, helping to integrate dwellings into the surrounding environment. On the outskirts of the village are a number of new, rural lifestyle developments.

On the east side of State Highway 1 is Ōhau School, the Ōhau domain and the Ōhau playcentre, as well as St John the Baptist Church, which is a protected heritage building listed in both the Horowhenua District Plan and on the Heritage New Zealand list. On the west side of the State Highway is the Ōhau Hall, which hosts a number of community events including the monthly Ōhau Market and table tennis evenings. A number of other businesses exist within the local area, including a café, a furniture store, and a mechanic.

Ōhau is also home to a beautiful natural environment, with the Ōhau River, Lake

Papaitonga and the beach all within the immediate vicinity. The Tararua Ranges provide a dramatic backdrop to the village when looking east. The wider landscape of Ōhau is characterised by a variety of productive uses including market gardens, vineyards and pastoral farming.

The varied, natural beauty of Ōhau is a long recognised feature, with the Cyclopaedia of New Zealand (published sometime between 1897 and 1905) providing the following description:

“Ōhau, some four miles north of Manakau, affords food for author and artist and pleasure for the tourist, for here is variety in open glade and forest land, hill and dell, and lake and river scenery, the last being unsurpassed for the beauty of its blue pellucid waters, its lordly islets, and superbly forest-clad hills, sloping down to the margin of the waters on Sir Walter Buller’s lake” (Lake Papaitonga).

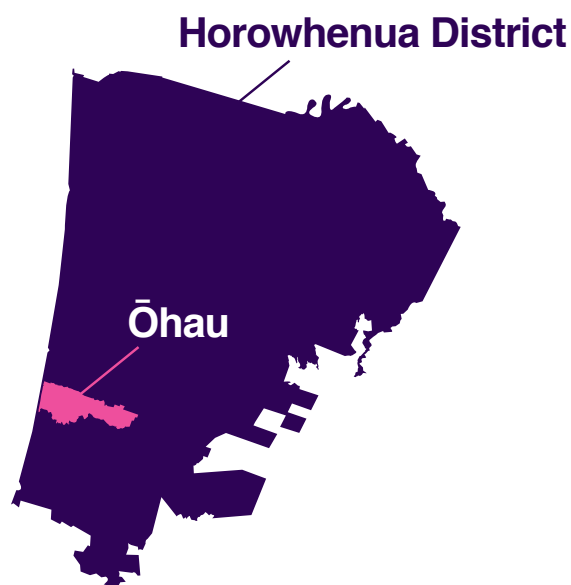
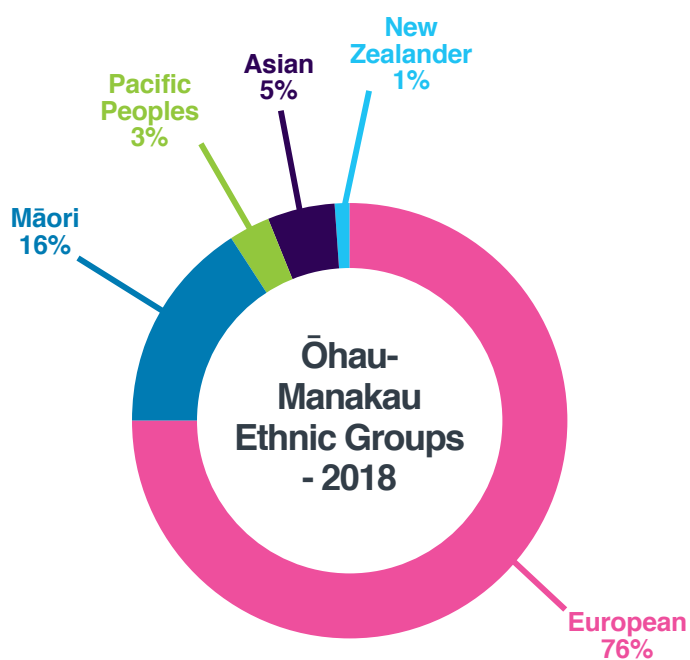


Te Hapori o Ōhau The Ōhau Community

At the time of preparing this Plan, preliminary 2018 Census data was available for the Ōhau-Manakau combined area. This showed a population increase of 369 people between 2013 and 2018, resulting in a total population of 2,154.

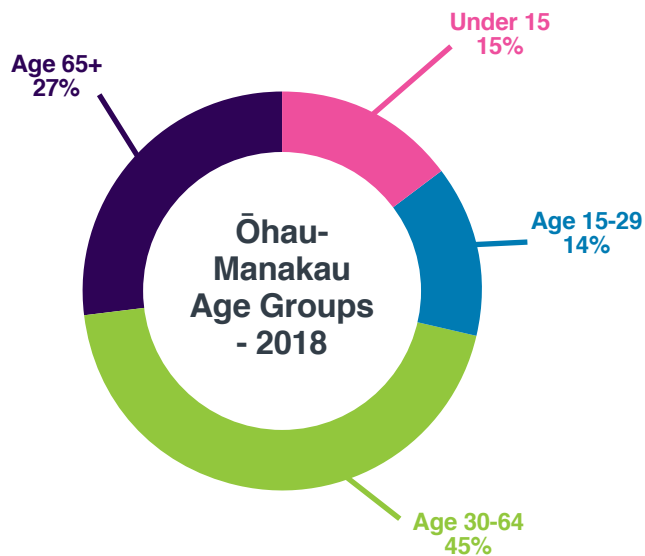
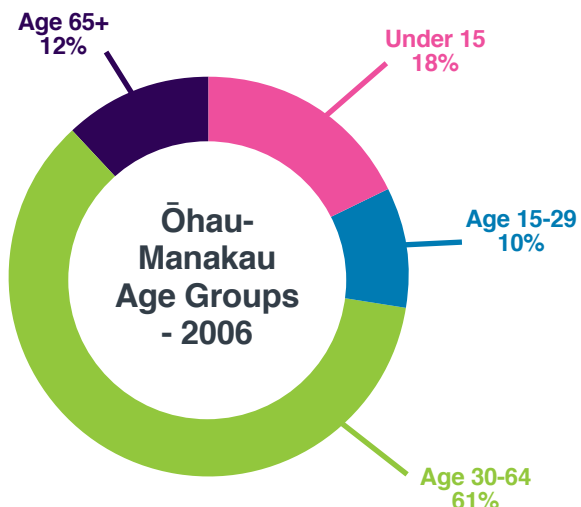
Horowhenua District Council expects the Ōhau population to continue to grow over the next 20 years, with an additional 300 houses anticipated over this period.

Within the Ōhau-Manakau area, the largest ethnic group was European, followed by Māori.



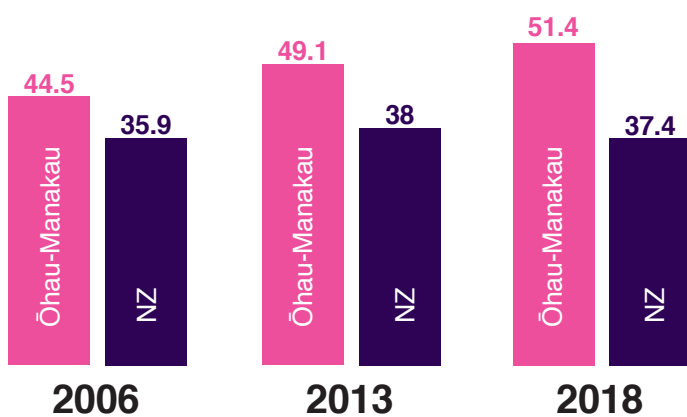
As of 2018, the largest age group within the Ōhau-Manakau area is 30-64, followed by over 65. The 65+ age group was the fastest growing between 2006 and 2018.

The following graphs show how age group distribution has changed in the Ōhau-Manakau area.



Over this same period, the median age in Ōhau-Manakau increased from 49.1 in 2013 to 51.4 in 2018.

The New Zealand median age in 2018 was 37.4. It is important to note that the Ōhau-Manakau census area includes the Speldhurst Country Estate Lifestyle Village (retirement village) which developed during this period and likely accounts for some of the increase in the 65+ population and median age.



Ngā Takahanga i puta ai te Mahere ā-Hapori o Ōhau

Development of the Ōhau Community Plan

Horowhenua District Council have used feedback from the community to prepare the Ōhau Community Plan. The engagement process included an online survey, a community drop-in day, a session with students of Ōhau School, and a workshop with a focus group made up of Ōhau residents.

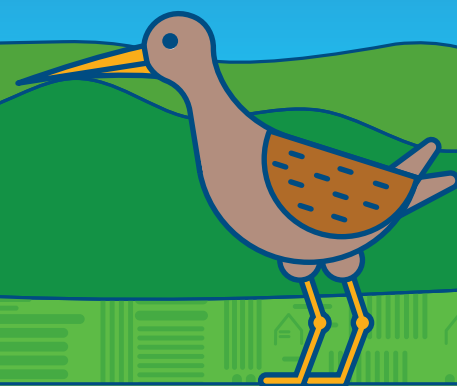


Te Matawhānui o te Hapori o Ōhau

Ōhau Community Vision

Kia haumaruru te papa kāinga o Ōhau, kia kaha ōna taura tūhonohono, kia mōhiotia whānuitia hei wāhi mō ngā rēhia tū-ā-nuku. Kia ora te taiao, kia mau tonu tōna āhua ake hei papa kāinga tuawhenua, ahakoa ka tipu haere.

Ōhau is a safe, connected village that is surrounded by a productive rural environment widely known as nature's playground. Ōhau will have a healthy, clean environment and will protect its rural, village character even as it grows.



Community Values

Environmentally sustainable

We nurture our environment, leaving it better than we found it. We are a place where people can experience the natural environment, as this helps to build a commitment to protecting it

Caring for each other

We know and look after each other, welcome newcomers and come together as a community to retain the sense of 'knowing your neighbours'

Sense of identity

We take pride in our history and identity. We celebrate our diversity – Māori and non-Māori, farmers and producers, rural village character and our natural environment



Ngā Take Matua

Ōhau Community Priorities

The Ōhau Community identified the following three priorities areas (in no particular order).

- **Kia mau tonu, kia pakari ake te āhua ake o Ōhau hei papa kāinga tuawhenua**
- **Kia aro ki te haumaruru o ngā huarahi, kia pai ake ngā kōwhiringa waka tūmatanui**
- **Kia tiakina te taiao māori, kia pakari ake ngā rēhia tū-ā-nuku**

-
- **Enhance and Protect the Village Character and Rural Identity of Ōhau.**
 - **Address Road Safety Issues and Improve Transport Choice.**
 - **Protect the Natural Environment and Enhance Recreation Opportunities.**

Each priority area has a range of actions associated with it. Across all three priorities area, the following actions were most important to the community:

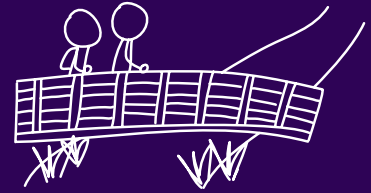
- **Maintain and Improve Access and Recreation Opportunities to Ōhau River**
 - **Provide Recreation Pathways (walking, cycling, horse riding etc)**
- **Provide for and Manage Growth in a Manner that Protects Rural Village Character**
 - **Provide Access to Beach**
 - **Continue to Advocate for O2NL**

Ngā Take Matua - Our Priorities

! Take Matua A - Priority A

**Kia mau tonu, kia pakari ake te āhua ake o
Ōhau hei papa kāinga tuawhenua.**

**Enhance and Protect the Village Character
and Rural Identity of Ōhau.**



A clear priority for Ōhau is to protect village character and rural identity.

This priority covers both the village itself and the wider rural landscape. In addition to an appreciation of the natural and built environment, the Ōhau community value being a part of a small, close knit community where everybody knows their neighbours. Anticipated growth could pose a risk to these special features if not managed appropriately.

Therefore, it is important that the special features of Ōhau are recognised and protected as it grows. This includes both the physical environment and the sense of community they currently have. The community also stated the importance of ensuring there is sufficient infrastructure in place to support this growth.



Action 1



Provide for and Manage Growth in a Manner that Protects Rural Village Character

Background

The community identified that protecting the rural village character of Ōhau, as well as the range of primary production activities occurring within the area, as a top priority. This is particularly important to consider as the community grows.

Council has prepared a growth strategy for the District (Horowhenua Growth Strategy 2040), which seeks to manage growth in a co-ordinated manner. It does so by identifying growth areas for all towns/settlements within the District where there is a short fall of appropriately zoned land to

accommodate projected growth out to year 2040. This Strategy identifies three growth areas for Ōhau. Council is likely to rezone this land progressively and as required over the next 20 years. This approach helps to ensure that growth occurs in a planned and co-ordinated way, which helps to protect farmland from urban/semi urban growth pressures.

What

Prior to rezoning this land for development, Council will work to understand the existing character of Ōhau (for example, site sizes, building setbacks, landscaping). This could occur through land use survey, aerial photographs, resource/building consent analysis and by working with the community to understand what aspects of Ōhau character they value. Council will then consider how to develop and incorporate specific provisions to protect this character into the District Plan.

Who

Horowhenua District Council.

When

End of 2021.

Success indicators

Any changes to the District Plan to rezone land specifically acknowledge the character of Ōhau and includes provisions to protect this.

Funding

Council has funding to carry out rezoning of land identified in the Horowhenua Growth Strategy. Therefore, this action will be carried out under existing budgets.



Action 2



Provide Infrastructure and Services to Support a Growing Community



Background

A number of people within the community identified that a growing community requires additional infrastructure – be it reticulated water and/or waste water, additional space in the local primary school, local road and State Highway upgrades to support additional traffic, and telecommunication services such as fibre broadband.

What

Horowhenua District Council have undertaken a reticulated water and waste water feasibility study. This feasibility study will be considered by Council as part of the Long Term Plan 2021-2041 process and a decision made about if and when these services will be delivered.

Council will continue conversations with central government agencies such as the Ministry of Education and the New Zealand Transport Agency to ensure they are aware of the rate at which Ōhau is growing.

Fibre broadband is available in the Ōhau village, but not the wider Ōhau area. Chorus is responsible for the delivering of this service. Based on the Chorus Broadband availability map, there are no plans to extend fibre coverage in Ōhau before December 2022. Council will continue to plan for growth and make other agencies aware of the need for new and improved services.

Who

Horowhenua District Council, Ministry of Education, New Zealand Transport Agency, Network Utility Providers (telephone and internet).

When

Ongoing.

Success indicators

- Outcome of feasibility assessments into delivery of reticulated water and waste

water are completed

- Safety improvements planned and delivered on State Highway 1 by NZTA
- Ōhau School has sufficient capacity to meet the needs of the population.

Funding

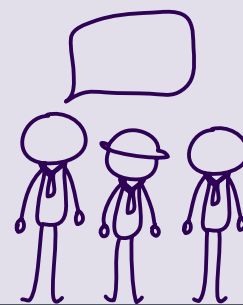
Funding exists in Council's Long Term Plan 2018-2038 to carry out the reticulated water and wastewater feasibility assessments. The remaining actions are the responsibility of other agencies, so do not come at a cost to Council.



Action 3



Investigate Opportunities for a 'Village Hub' to Establish



Background

The Ōhau community has shown interest in providing opportunities for small scale commercial development to occur in a consolidated area of Ōhau. Some suggestions included a small village hub containing businesses such as a dairy, café, and other small businesses all co-located in a central part of Ōhau. This would both

provide 'bumping places' for community members to meet and an improved range of local services for the community as it grows.

What

Council cannot control whether or not businesses will establish. However, it can ensure the District Plan enables the right opportunities as opposed to restricting them. As part of the rezoning discussed in Action 1,

Council will investigate whether there is a need to zone land for commercial development within Ōhau and, if so, where in Ōhau this should be.

The rezoning process is public, so would include opportunities for the community and landowners to engage with Council further on this matter.

Who

Horowhenua District Council in an enablement role, private developers in an implementation role.

When

End of 2021 (concurrent with Action 1).

Success indicators

Council understand whether there is a need for commercial land in Ōhau and, if so, take steps to provide this opportunity.

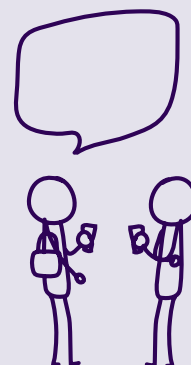
Funding

Council has funding to carry out rezoning of land identified in the Horowhenua Growth Strategy. Therefore, this action will be carried out under existing budgets.



Action 4

Establish a Community Group



Background

A number of community members suggested establishing a community group for Ōhau. Suggestions ranged from a relatively informal community group that would help to welcome new people to the area, arrange community events, celebrate different cultures within the community, provide updates and information

to the community and build capacity within the community, through to a more formalised group such as a progressive association. This group could help to ensure the village, ‘know your neighbours’ feel of Ōhau continues as the population grows, as well as ensure that the views of the community are heard.

What

Community members will work together to establish a group that meets the needs and desires of the community. The group may also change and evolve over time. Council staff can assist the setup of this group by providing guidance on how other similar groups in the District operate and by providing the group information on Council projects for the group to share with the community. It will be important that this group includes representation from across the community, including Ngāti Kikopiri.

Who

Ōhau Community.

When

To be determined by the community.

Success indicators

A Ōhau Group that meets the needs of the community is established.

Funding

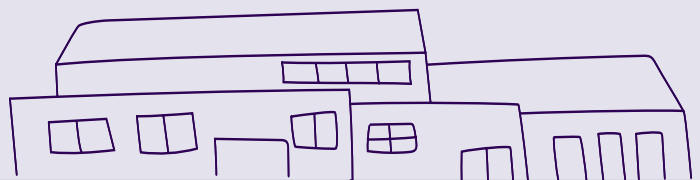
No cost to Council.



Action 5



Maintain and/or Upgrade Ōhau Hall



Background

The Ōhau Hall is a valued community asset and is well utilised by the community. It provides a place for people to come together and interact with each other. The Hall hosts the monthly Ōhau Market, frequent table tennis and bowls evenings, and many other events. The Ōhau Hall Committee own and manage the Hall.

The Ōhau Community expressed a desire to see the Ōhau Hall maintained and upgraded. Suggestions included alterations to enable a wider variety of use, co-locate community facilities such as a library service, and cosmetic improvements such as paint, furniture, or curtains, and better heating.

What

Council has a Rural Hall Grants (\$30,000 available per year) to assist with the costs of maintaining rural halls. Ōhau Hall is one of the 'tier one' priority halls that this fund

is targeted at. The Ōhau Hall has received funding on a number of occasions. Most recently, the Ōhau Hall received funding towards the cost of sanding and varnishing the floor, with the shortfall in funding covered by the Ōhau Hall Committee and voluntary labour of local residents. The Ōhau Hall Committee are encouraged to continue applying for this fund for maintenance related projects, including heating and cosmetic improvements.

For larger scale projects such as redevelopment or alterations to enable a wider variety of use, Council would need to understand the community's expectations, the cost to Council, and the community's contribution. If the Ōhau Community establish a community group, the group could work with the Hall Committee and the wider community to understand long term aspirations for the hall and put forward a proposal to the next Council Long Term Plan for funding consideration.

Who

Ōhau Hall Committee/Ōhau Community, with assistance from Horowhenua District Council.

When

Ongoing.

Success indicators

- Well maintained and well utilised hall that meets the community's needs.
- Hall use remains consistent and/or improves.

Funding

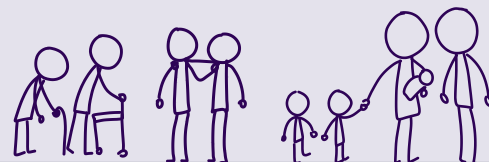
Rural Halls Grant for ongoing maintenance and cosmetic improvements.



Action 6



Hold Additional Community Events/Projects



Background

The Ōhau Community expressed a desire for more events (both small and large scale) and community projects. Such events and projects provide opportunities for community members to meet and get to know each other better. This will help to ensure the 'village' feel of Ōhau is protected and enhanced.

What

The Ōhau Community should determine what events they would like to have and then explore how to make these events happen.

Some suggestions include:

- Street/neighbourhood barbeque.
- Ōhau Community Group launch.

- Quiz night.
- Pop-up pub (weekly or monthly) at the Ōhau Hall, manned by locals.

The community have recently had success in delivering on community-led projects such as the underpass mural and have organised the regular Ōhau Market for many years.

Council have grants to assist with community events and projects. Further information is provided below.

Who

Ōhau Community, with assistance from Horowhenua District Council.

When

Ongoing.

Success indicators

Annual Community Event/Project.

Funding

Council have a number of grants that could support this initiative, depending on the nature of the event or project proposed.

These include:

- Horowhenua Events Grant (max. \$250 per event).
- Vibrant Communities Grant (total funding pool of \$12,500 per year).

Council also administers the following grant on behalf of Creative New Zealand

- Creative Communities Grant (two funding rounds per year, each with \$13,500 available).

Action 7

Recognise and Celebrate Ōhau History



Background

Ōhau has a rich and varied history. Capturing and celebrating this unique history could assist with ensuring Ōhau retains its identity as it grows.

What

Council could assist the local community – both Māori and non-Māori to capture and record local knowledge, stories, and history of the area. This could include key events, prominent figures within the community, or stories about important landmarks or sites.

Council and other parties could use this information to make local history visible and create a unique sense of place. Some examples include displaying local history at the Ōhau Domain or by recognising local history in the naming of new streets.

Who

Horowhenua District Council to co-ordinate, in partnership with Kikopiri and the wider community.

When

Ongoing.

Success indicators

Local history made visible in new development opportunities.

Funding

None identified at present. The initial exercise of collating information may be able to be carried out within existing budgets.





Action 7



Celebrate and enhance Kikopiri Marae to build connection with the community and to protect and secure its role in the community's future.

Background

Kikopiri Marae, located on Muhunua West Road, has long history with the Ohau and Muhunua area. It is thought to be the oldest of the Raukawa marae, having been built 120-130 years ago and is the Marae of Ngāti Kikopiri and Ngāti Hikitanga.

History of Marae

The Marae is actively planning for its future – looking as far forward as 1,000 years. To ensure it can continue and extend its important role in the community into the future, the Marae has aspirations of building closer connections with the wider Ohau and Muhunua communities. It seeks to become a stronger and more accessible focal point for current and future residents to come together, care for the local environment, and recognise and celebrate local values, history, and connections to the land.

What

- Establish an orchard on the Marae land, with Ohau School taura (students) to be kaitiaki of the orchard. The orchard will in turn feed and nurture the local community;
- Hold a Marae open day to welcome the wider community, demonstrate manaaki, and help to improve people's familiarity and comfort with visiting the Marae;
- Encourage the Marae facilities to be used by the public for a range of community meetings or activities (whānau would retain preference for tangi and unveiling);

- Work towards the Marae becoming a Civil Defence centre for the Ohau community;
- Host school visits provide a space for learning tikanga Māori, Te Reo Māori, and marae-based protocols.

Who

- Kikopiri Marae
- Supported by Ohau community and Horowhenua District Council.

When

Ongoing.

Success indicators

- Marae open day held
- Improved community awareness and comfort with tikanga and visiting the Marae
- Marae used for community events.

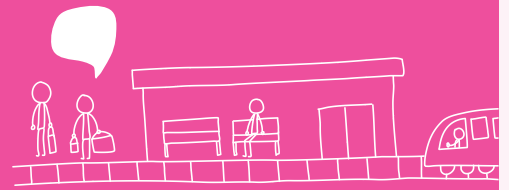
Funding

- Various sources, though none specifically identified
- Community to support.

! Take Matua B - Priority B

Kia aro ki te haumarū o ngā huarahi, kia pai ake ngā kōwhiringa waka tūmatanui.

Address Road Safety Issues and Improve Transport Choice.



State Highway 1 currently bisects Ōhau, severing the community. As traffic on the State Highway increases, the community are becoming increasingly concerned about traffic safety, particularly when entering or exiting the State Highway, or crossing the State Highway to access the other side of the village.

The Ōtaki to North of Levin highway will bring significant safety improvements for Ōhau, help to address the issue of severance for the existing village, and improve connectivity to the north and south. However, the highway has the potential to sever some of the eastern rural residents from the rest of Ōhau. It will also be important the highway is supported by adequate mitigation (noise mitigation, plantings, walking and cycleways) to minimise effects on the local community.

Therefore, Council welcome the October 2019 announcement that NZTA have committed to carrying out a detailed business case to refine the road corridor and carry out the Notice of Requirement/Designation process. Council see this as an opportunity to advocate for the best outcome for the Horowhenua community.

The community has also raised concerns about the safety of local roads, identifying that traffic speeds are too high and that the lack of footpaths and/or cycleways make walking and cycling dangerous.

In addition, the community identified a desire to see public transport options to connect Ōhau to the north (i.e. Levin, Palmerston North) and south (Wellington).





Action 1



Continue to Advocate for O2NL



Background

Confirmation that O2NL will go ahead is great news. Council will continue to advocate for the community and encourage NZTA to keep them informed and involved throughout the design process.

What

Council will continue to advocate for the community and will provide updates to affected communities, such as Ōhau and neighbouring Manakau, about how the project is progressing and share information.

It is important that Council work with NZTA to ensure that NZTA are aware of projected growth and to achieve good access opportunities in and out of Ōhau.

Who

Horowhenua District Council.

When

Ongoing.

Success indicators

Notice of Requirement/Designation process secures appropriate mitigation.

Funding

Council advocacy costs are already provided for in existing budgets.





Action 2



Improve Connectivity between East and West of Ōhau

Background

State Highway 1 presents a significant barrier between the east and west sides of Ōhau. This issue is made worse by increasing traffic from the south. While the O2NL expressway will assist with this, it will be several years before construction begins. Therefore, NZTA need to deliver interim measures to address the safety of this intersection.

What

Council's role is to advocate on behalf of the community for NZTA to commit to short term safety improvements. There are opportunities to do this through NZTAs Safe Networks Programme.

Who

NZTA, with Horowhenua District Council acting as an advocate for the community.

When

To be determined by NZTA.

Success indicators

NZTA commitment to improving safety of State Highway intersections within Ōhau.

Funding

Costs to be covered by NZTA.



Action 3



Improve Road Safety on Local Roads and Existing State Highways

What

The Ōhau Community raised concern about high traffic speed on local roads and dangerous intersections. In particular, Arapaepae Road intersections. Since community engagement occurred on this Plan, Council conducted a review of speed limits on rural roads. This resulted in a reduction in the speed limit on several roads within Ōhau. Council will take into account the identified intersections in its Long Term Planning.

Some key roads with reduced speed limits are set out below:

- Buller Road: 60km-80km, depending on section.
- Muhunua East Road: 80km.
- Muhunua West Road: 80km.

Who

Horowhenua District Council.

When

Already complete.

Success indicators

Reduced speed limits.

Funding

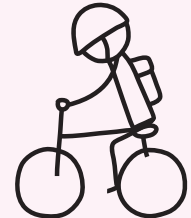
Already complete.



Action 4



Provide Footpaths, Cycleways and Bridleways



Background

The Ōhau Community identified a lack of footpaths and cycleways as a deterrent to walking and cycling, citing safety concerns. In particular, the community expressed a strong desire for footpaths leading to Ōhau School, Ōhau Domain, and the Ōhau Hall as well as cycleways connecting Ōhau to Levin.

What

A pathway to Levin will be provided as part of the O2NL project. Council note that community members expressed a desire to see this pathway become a multi-use pathway to enable it to be used for horse riding, as has been provided alongside the Mackays to Pekapeka highway in Kapiti. The decision about whether to do this is the responsibility of NZTA, but Council will ensure NZTA are aware of this feedback. Providing footpaths on local roads would be the responsibility of Council.

Council currently has a District-wide footpath budget. Council has fully allocated this budget for the next two years. The next opportunity to have footpaths for Ōhau considered would be through the next Long Term Plan, the process for which will begin in 2021. Council will consider this request as part of the next Long Term Plan.

While the Ōhau Community Plan will inform Council's Long Term Plan, community members are encouraged to submit on the next Long Term Plan in support of such projects to improve chances of ultimately securing funding.

Who

Horowhenua District Council and NZTA.

When

Ongoing and related to the O2NL project (construction to start in 2025).

Success indicators

Funding allocated for Council led pathways and footpaths in the 2021-2041 Long Term Plan and shared pathway (or similar) shown on O2NL Notice of Requirement

Funding

The O2NL pathway will be funded by NZTA. Pathways provided by Council will require funding to be allocated in the 2021-2041 Long Term Plan. This request will be considered alongside all other requests made through the Long Term Plan and a decision made accordingly.



Action 5



Investigate and Provide for Public Transport

Background

The community expressed a desire for improved transport choice, including public transport. Horizons Regional Council are the primary body responsible for providing public transport. However, Horowhenua District Council have a role in advocating for the Horowhenua community.

What

The Horowhenua District Council has prepared the 'Horowhenua Integrated Transport Strategy'. The aim of this Strategy is to develop an integrated, multi-modal transport strategy for the District. It will provide an overarching strategic vision and principles that will be used to guide and inform transport planning, investment and delivery over the next 30 years. This Strategy will, among other things, investigate the District's public transport needs and will act as a tool to advocate for public transport.

Who

Horowhenua District Council and Horizons Regional Council.

When

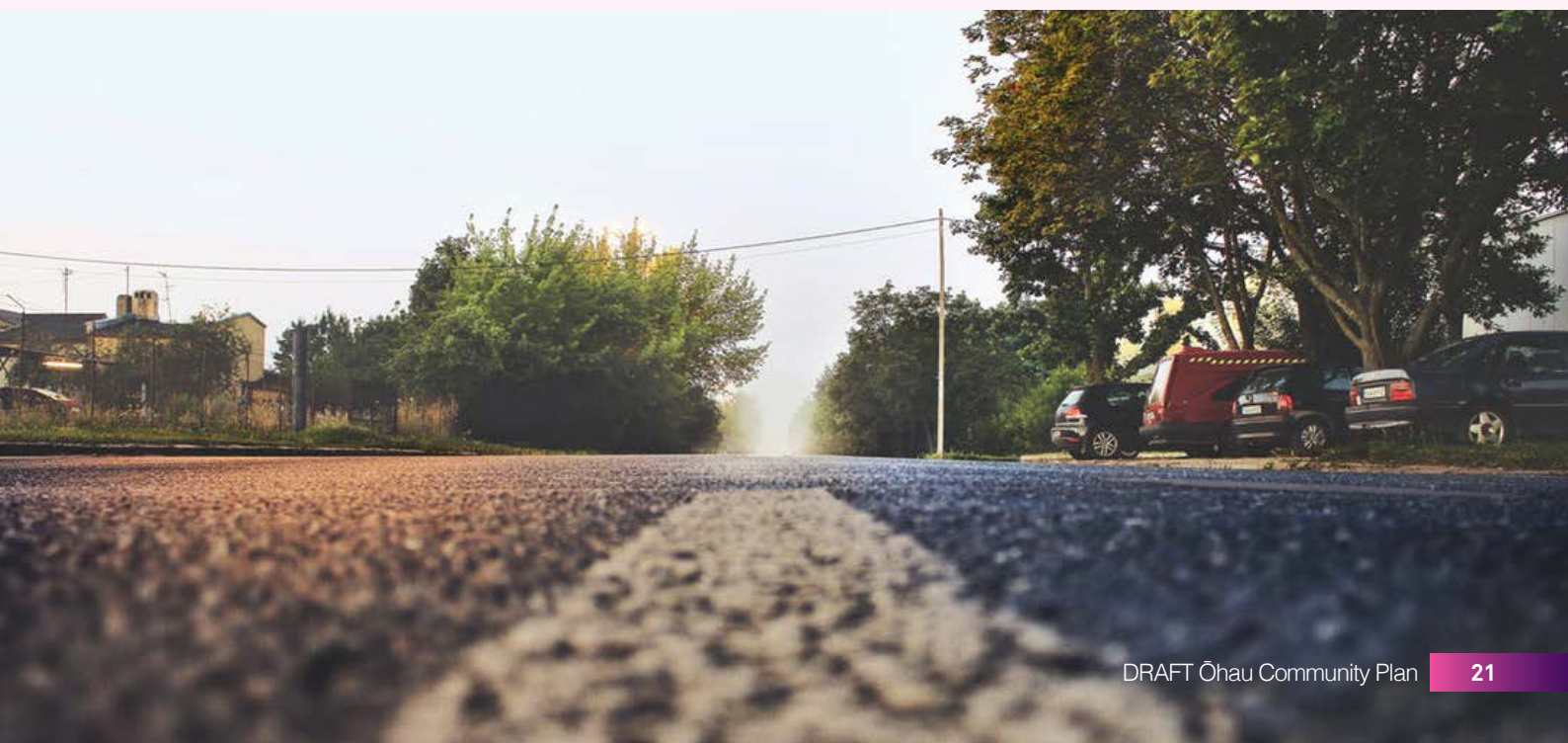
On-going.

Success indicators

The Horowhenua Integrated Transport Strategy sets out the need for public transport and Council use this Strategy as a vehicle to advocate with the Horizons Regional Council and central government.

Funding

Central Government and Horizons Regional Council have primary responsibility for delivering public transport.



! Take Matua C - Priority C

Kia tiakina te taiao māori, kia pakari ake ngā rēhia tū-ā-nuku.

Protect the Natural Environment and Enhance Recreation Opportunities.



Ōhau is situated within a beautiful and varied natural environment, with the Ōhau River, Lake Papaitonga, the beach, and the Tararua Ranges all being key features of the landscape. Ōhau residents wish to see these features protected for future generations.

Ōhau residents described the area as 'nature's playground'. The community place significant value on the variety of outdoor recreation opportunities available within the immediate vicinity of Ōhau.

Ōhau residents also identified a desire to see these opportunities further enhanced, with particular focus on equestrian facilities for the community's horse riding community, more play facilities for children and improving access to water bodies.

Council see a particular opportunity to partner with relevant iwi and hapū in delivering on the actions associated with this priority.

Action 1

Maintain and Improve Access and Recreation Opportunities to Ōhau River

Background

The Ōhau community closely associate with the Ōhau River and wish for recreational opportunities connected with the river to be improved. This may include walkways along the river and/or improved river reserves, as well as improved environmental management.

Council already has a Ōhau River Reserves Management Plan which covers:

- Gladstone Reserve
- Kimberley Reserve
- Kirkcaldies Reserve
- Parikawau Reserve
- River access of Muhunoa West Road

What

Many of the suggestions for improving access and recreation opportunities along the Ōhau River have been previously identified in the Ōhau River Reserves Management Plan. However, these projects have no funding identified in Council's 2018-2038 Long Term Plan and in some cases, requires access over private land. This can be a barrier to implementation.

Both the Ōhau Community Plan and the Ōhau River Reserves Management Plan will inform the preparation of the next Long Term Plan in 2021. This will consider if, when, and how much funding to allocate to improving recreation and access along the Ōhau River. Identifying this as community priority in this plan will help to emphasise the importance of this to the community and assist Council with their decision making on this matter.

While the Ōhau Community Plan will inform Council's Long Term Plan, community members are encourage to submit on the

next Long Term Plan in support of such projects to improve chances of ultimately securing funding.

Who

Horowhenua District Council and Horizons Regional Council.

When

Dependent on funding being allocated in the 2021-2041 Long Term Plan

Success indicators

Funding allocated in the 2021-2041 Long Term Plan.

Funding

None at present.

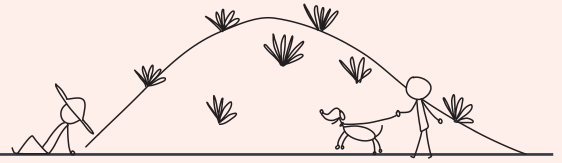




Action 2



Provide Access to Beach



Background

The Ōhau Community have identified a desire for improved access to the beach. There have been discussions spanning a number of years about developing a walking track to the beach from the end of Muhunua West Road.

What

Council have purchased land for this project, but due to external factors have experienced unforeseen delays. Council are working to overcome these challenges and deliver this project.

Who

Horowhenua District Council.

When

Uncertain.

Success indicators

Walkway from Muhunua West Road to Beach constructed.

Funding

Existing budget.



Action 3



Improve access to the Waiwiri Stream and Lake Papaitonga

Background

Although commonly known as Lake Papaitonga, the lake's traditional name is Waiwiri or "trembling waters". The name 'Papaitonga' is the original name of the largest island in the lake. The other island within the Lake was originally named Papawharangi. These islands are also known by the names Motukiwi and Motungarara, however these are not traditional Māori names – they were made up by Walter Buller in the 1890s.

The Lake Papaitonga Reserve is administered by the Department of Conservation. The reserve is an important refuge for birds that depend on wetlands or lowland forests for their survival.

The Waiwiri Stream largely passes through private farmland.

The significance of Lake Papaitonga and the Waiwiri Stream is recognised in the Horowhenua District Plan, with Lake Papaitonga identified as a Group 1 priority water

body and the Waiwiri Stream is a Group 2 priority water body. Both the Lake and the Stream are recognised as an Outstanding Natural Feature.

What

Improved access opportunities would need to be explored further, alongside Treaty Partners and stakeholders or agencies who would be involved in delivery. For example, the Department of Conservation would play a lead role in regard to Lake Papaitonga, while access along the Waiwiri Stream would require agreement from the landowner. The role of Council would be largely in a supporting these conversations and projects as opposed to decision making.

Who

- Iwi
- Horowhenua District Council
- Department of Conservation
- Landowners

When

Ongoing, dependant on other agencies.

Success indicators

Conversations underway between key parties.

Funding

None identified.



Action 4



Prepare and Implement an Ōhau Domain Development Plan

Background

The community identified a range of improvement requests for the Ōhau Domain. This includes a playground, sports facilities, extension to the existing BMX track, more rubbish bins, and seating.

What

While there may be an opportunity to undertake some initial, small scale improvements in the short term, the domain may benefit from a wider development plan.

Large scale projects such as developing and implementing a domain development plan will require significant funding. The process to have this request considered is through the Long Term Plan process, which will

commence in 2021. The Ōhau Community Plan will inform this process, so having this identified as a priority in the plan will help to emphasise the importance of this to the community and assist Council with their decision making on this matter.

While the Ōhau Community Plan will inform Council's Long Term Plan, community members are encourage to submit on the next Long Term Plan in support of such projects to improve chances of ultimately securing funding.

Who

Horowhenua District Council.

When

Seek funding to commence in the 2021-2041 Long Term Plan.

Success indicators

Ōhau Domain Development Plan adopted.

Funding

No funding allocated.

Action 5



Provide Recreation Paths

Background

The community identified shared pathways, recreational walkways and bridleways as a priority action for Ōhau. Council has a Shared Pathways Strategy and is currently working on an implementation and concept plan.

Council is undertaking an assessment into the opportunities to provide recreation opportunities for horse riders

Council currently has a budget of \$400k per year, which allows approximately 6km of pathway to be built. Therefore, completing the shared pathway network will be a long term project, spanning over many years. Therefore, Council will prioritise the routes and allocate spending based on:

- Safety
- Ease of delivery
- ‘Bang for buck’

What

Council have established a Shared Pathways Reference Group, which includes a range of stakeholders and community members. Council will engage with this and other groups throughout the shared pathways project.

While Council is going through a prioritisation

exercise, it is important to note that priority projects could change over time – for example, if a connection became easier to deliver (for example, willing landowner proposing to subdivide) then it may move up the priority list.

Therefore, the Ōhau Community should seek to influence this prioritisation process through avenues such as the Shared Pathways Reference Group and Council’s Annual and Long Term Planning processes. The Ōhau Community should also consider what type of shared pathways they want where – for example, traditional shared pathway (walking, cycling, mobility device users), or multi-use (includes users such as horse riders).

Who

Horowhenua District Council.

When

Ongoing.

Success indicators

Construction of new shared pathways.

Funding

District wide funding available.



Action 6



Maintain and/or Improve Freshwater Quality

Background

The community expressed a desire to see freshwater quality maintained and improved for future generations. Horizons Regional Council is responsible for monitoring water quality and undertakes a number of environmental projects to improve freshwater quality, including but not limited to:

- Helping to fence off rivers and streams so stock do not get into water and contaminate it.
- Helping rural land users to stop soil eroding from hills and into water.
- Ensuring waste that has to go into water is properly treated to meet water quality standards.
- Monitoring water taken out of the river so there is enough for everyone, including fish.

What

Horowhenua District Council can continue to communicate the community's aspirations with Horizons Regional Council. The community can assist by taking part in planting days, following best farming practice, and making sure to follow good environmental practice when visiting rivers (for example, cleaning gear or equipment when moving between waterways and removing any litter).

If the community have additional ideas on how to improve water quality, they are encouraged to approach Horowhenua District Council and Horizons Regional Council to discuss and seek support in delivering these or by assisting by making connections with other environmental groups.

Who

Horizons Regional Council.

When

Ongoing.

Success indicators

Water quality at monitoring points improves.

Funding

No cost to Horowhenua District Council.





Action 7



Develop Greenspace in Bishops Vineyard

What

The Ōhau Community also expressed a desire to see development of the greenspace at the end of Ivy Lane to include a playground, seating, and rubbish bins.

The process to have this request considered is through the Long Term Plan, which will commence in 2021. While the Ōhau Community Plan will inform Council's Long Term Plan, community members are encouraged to submit on the next Long Term Plan in support of such projects to improve chances of ultimately securing funding.

Who

Horowhenua District Council.

When

Seek funding in the 2021-2041 Long Term Plan to enable project to commence.

Success indicators

Funding allocated in 2021-2041 Long Term Plan.

Funding

No funding allocated.



The Future of Ōhau - Aspirational Ideas

The following ideas are aspirational projects that came out of a Ōhau Community Workshop held on 12th November 2019.

This workshop sought to challenge constraints and think big – both as a means of identifying transformative projects for the future and to test the vision and priorities drafted through the first stage of community engagement that took place in July and August 2019.

While some may take a long time to implement or may not be delivered by Council, they demonstrate future possibilities and/or ideas for those looking for development opportunities that align with the community's aspirations and vision.

‘Whole of Ōhau Experience’

A guided or self-guided walking/cycling tour of key sites and destinations within Ōhau – linking food producers, vineyard and future boutique shops/eateries with key aspects of the natural environment, such as the Ōhau River, swim spot at Kirkaldies Bridge, the beach, and Lake Papaitonga.

Annual Music Event

Hold a large scale, annual outdoor music event in Ōhau that attracts both locals and ‘out of towners’ as a means of showcasing the area. This could also include local growers and producers to create an authentic, home grown experience.

Multi-Purpose Sporting Facility

A purpose built facility that provides for a range of sporting activities, such as football, cricket, rugby and BMXing. This could be coupled with a better connection to an upgraded Ōhau Hall that hosts a variety of indoor sports, such as bowls and table tennis.

Ngā takahanga o muri ake nei

Next Steps

Monitoring of the actions identified in the Ōhau Community Plan will be undertaken yearly.

A review of the Ōhau Community Plan will be undertaken during 2024 or earlier if required.

Community Project

Horowhenua District Council has \$5,000 dollars to award to the community for a community led project. We are looking for a volunteer/group of volunteers to lead this.

If you have an idea, put together a proposal including:

- Your idea
- How much it will cost
- How the project will be completed (project plan)
- Level of community support for the project

We will assess the proposal and, if approved, establish a process for releasing the funds to enable the project to go ahead.

Here are some ideas that were put forward through the Community Plan – but we are open to other proposals as well:

- Community Mural
- Park benches/picnic tables at the Domain
- Extension to the BMX track
- Community event – e.g. street barbeque, quiz night, or pop-up pub at the Hall

Submit your proposal to communityplans@horowhenua.govt.nz – the funding will be assigned to a project on a first in, first served basis.



Appendix 1 - Summary of Engagement and Plan Development Process

School Engagement

Council Officers visited the students from Ōhau School on the 29th July 2019 to get their perspectives on the future of Ōhau. The students were split into groups as follows: Year 1; Year 2-3; Year 3-4; Year 5; Year 6; Year 7-8.

Officers spent 30 to 45 minutes with each group and asked the following questions. The top 3-5 answers for each question are provided below:

- **What your favourite place/thing to do in Ōhau?**
 - School Grounds.
 - School Classrooms.
 - Domain.
 - Playing Sports.
 - Spending Time with Friends and Family.
- **What would you like to change or improve in Ōhau?**
 - Open a Dairy/Supermarket.
 - Upgrade the Domain (seating, shade/shelter, toilets, playground).
 - Build New Bike Tracks.
 - New Sports Fields/Courts with Sporting Equipment.
 - Protect Animals (animal shelters, habitat protection, native bird sanctuary).
- **What one thing would you like to protect in Ōhau so it is still here when you are a grown up?**
 - Tararua Ranges
 - School Grounds
 - Family
 - Clean Environment and Wildlife
 - Rivers, Lakes, and Beaches.
- **If you had \$5,000 to spend on a community project for Ōhau, what would you spend it on?**
 - Recreation Projects (e.g. domain upgrades).
 - Community Based Projects (e.g. sharing shelf).
 - Roothing/Transport Projects (e.g. footpaths, cycleways).

Community Survey and Drop in Session

The wider community were invited to provide feedback via survey or by attending a drop-in session at the Ōhau Hall on Saturday 3rd August. Approximately 30 people visited the drop-in session and 84 people provided feedback via survey.

The feedback provided at the drop-in session and via the survey were used along with the feedback provided by the students of Ōhau School to develop the draft priority areas and actions above.

Workshop

The initial draft Ōhau Community Plan was tested at a workshop with Ōhau residents. Their feedback was then used to refine the Plan to prepare a final draft.

Draft Ōhau Community Plan

The final draft Ōhau Community Plan was presented to the community on August 2020. The feedback was used to further refined the Plan and prepare the final version to be adopted by Council.

Adoption

Council formally adopted the Ōhau Community Plan on XXXX.





For more information:

 horowhenua.govt.nz

Lauren Baddock
Strategic Planner

 06 366 0999  communityplans@horowhenua.govt.nz

Horowhenua 
DISTRICT COUNCIL

 enquiries@horowhenua.govt.nz

 www.horowhenua.govt.nz

 HorowhenuaDC

 06 366 0999

 Private Bag 4002, Levin 5540

 126 Oxford St, Levin 5510