

Meeting Minutes

**Levin Landfill Neighbourhood Liaison Group (NLG) Meeting
Tuesday 12 March 3.00pm – 5.00pm
Horowhenua District Council - Ante Room, 126 Oxford St, Levin**

In attendance

Parekura MacGregor (Facilitator)	Sam Jennings (HDC Councilor)
Charles Rudd	Daniel Haigh (HDC)
Deanna Paki (Lake Trustee)	Rob Benefield (HDC)
Trevor Hinder	Campbell Dodd (HRC)
Jenny Rowan	David McMillan (HDC)
Jack Warren	Chloe Marheine (HDC)
Vivienne Bold	Eugene Henare (online)
Christine Moriarty	David Moore

1. Welcome and Karakia

Meeting opened by Parekura MacGregor, and a karakia by Charles Rudd.

2. Apologies

Pataka Moore, Peter Everton, Peter Thompson

3. Acknowledgements

Cr Sam Jennings and HRC officer Campbell Dodd for your attendance.

The technical experts from Earthtech Lindsay Strachan and Philip Kelsey for your attendance and presentation.

4. Previous Minutes

Charles Rudd raised his concerns about the need for process to be followed and requested that the group run through the minutes of the previous meetings of the NLG held on 7 September 2023, 15 June 2023 and 18 April 2023. Charles raised a query around the drains and ponding from the minutes from 16 August 2022.

Charles Rudd's point was noted, and the minutes were acknowledged but not discussed in detail.

Daniel Haigh acknowledged the ponding matter from August 2022 as complete and noted these minutes had been discussed at the NLG meeting on 18 April 2023.

Charles Rudd asked for it to be noted that the Chair will not discuss the previous minutes.

Charles Rudd asked for it to be recorded that he has received correspondence from the Prime Minister's office, but noted he did not wish to table the correspondence.

5. Meeting purpose

BPO 3 – Levin Landfill Option for dilute solute removal presentation

Lindsay Strachan and Philip Kelsey from Earthtech joined the meeting via teams and provided a presentation on the BPO 3 - Levin Landfill Option for dilute solute removal.

Action: Presentation to be made available on the HDC website.

The presentation provided an overview of the BPO selection process and the staged installation approach of the proposed option, estimated capital costs, timeline for consenting and implementation of the proposed solution.

Eugene Henare noted his objection to all proposals, as no leachate is acceptable. Eugene shared his views around the Northern farm drain and the legality of the road and Council ownership.

Eugene Henare spoke to the need for consultation with the landowners and raised concerns around the membership of the NLG, and the need for any members inducted to be noted. Resolutions and acceptance need to be undertaken by NLG members only.

Christine Moriarty noted her objection to Eugene's comments as she has been involved from the beginning.

Daniel Haigh spoke to the process Council has followed and noted the need for the discussion around the BPO and the engagement with NLG and PMG. Daniel noted that the Elected Members decision on the preferred option will initiate the consent process. Daniel Haigh acknowledged the need for the groups support with the final option before tabling with Elected Members and through the consenting process.

Charles Rudd questioned Philip around the groundwater and the flow from the south drain, and the effect on the drain going into the Hokio stream.

There was discussion around the loadings on the Levin Wastewater Treatment Plant (LWWTP), and the effect growth will have and if the LWWTP can handle the increased loads. Daniel Haigh noted the discussion and outlined the Master Plan work for the LWWTP for inclusion in the LTP.

Trevor Hinder asked about the leaking into the stream and what the current volume is and at what depth is it entering the stream. Trevor shared his views on a wetland.

Cr Sam Jennings supported Daniel Haigh's points and reiterated that we are at the first step to engage ahead of Council decision to consent and implement the BPO

Archaeological Report-Post Production Thinning

David McMillian provided a presentation on the work undertaken by Insite Archaeology - Daniel Parker. The presentation outlined:

- the work onsite to date
- summarised the discovery of 2 new sites and the support of previous discovery's regarding archaeological significance of site (Taylor, 2002, Taylor Sutton & Parker, 2004).
- Discovery aligns with information expressed by members of Muaūpoko, Ngāi Tara, Ngāti Pareraukawa, hapu of Ngāti Huia.
- The potential for further midden and oven discoveries.

Charles Rudd acknowledged the work undertaken by Daniel Parker but shared his concerns about the need for further archaeological investigations.

Charles Rudd questioned where Council were up to with Option 2 for closed landfill future use options, noting there were a number of points around remediation within this option that have not yet been discussed with NLG. When will the other options happen.

Daniel Haigh noted Charles comments and outlined the priorities Council officers have been focused on following the closure of the Landfill, including the completion of the capping of the New Landfill and working with Lindsay and Phil from Earthtech on the best option for the remediation of the leachate, as well as the work on the Waste Management and Minimisation Plan for community consultation through the LTP process.

Daniel acknowledged that Council are not as far advanced as we would like to be on the future options for landfill site, but are progressing matters that could most impact the environment as a step in the right direction.

Cr Sam Jennings noted Daniel's comments and agreed there has been a robust process and that Council are not as far ahead as we need to be, but recognised there has been a lot of work towards the new Waste Management and Minimisation Plan.

Action

Daniel Parkers Archaeologist report and the slide presentation to be shared with NLG and published on the HDC website.

WMMP Consultation

Cr Sam Jennings spoke to NLG about the focus for Elected Members over the last few months around the sign off of the draft Long Term Plan (LTP) papers for consultation, noting there is a big focus for this LTP on the Solid waste activity, including seeking Community input into the recycling service and who pays, considering Council budgets and the debt books, and the need for a targeted rate for remediation of landfill over the next 30 years.

Daniel Haigh noted the consultation period for the Long Term Plan is the from 15 March to 15 April 2024.

Capping New Landfill

David McMillian provided a verbal update on the Capping project and shared some photos of the work that has been completed. NLG acknowledged the good news. There were further questions around the flare and soil testing. David confirmed the flare is operating efficiently, and the soil testing is being undertaken in line with the resource consent conditions, and the soil samples have been passed by authorities.

6. Date of next NLG meeting

There was discussion around timing for the next NG meeting and it was agreed that the next meeting would be scheduled for June 2024.

7. Closing and Karakia

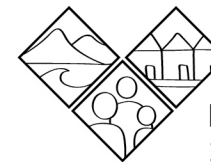
Charles Rudd closed the meeting with a karakia

Meeting closed: 5.07pm



BPO - Levin Landfill

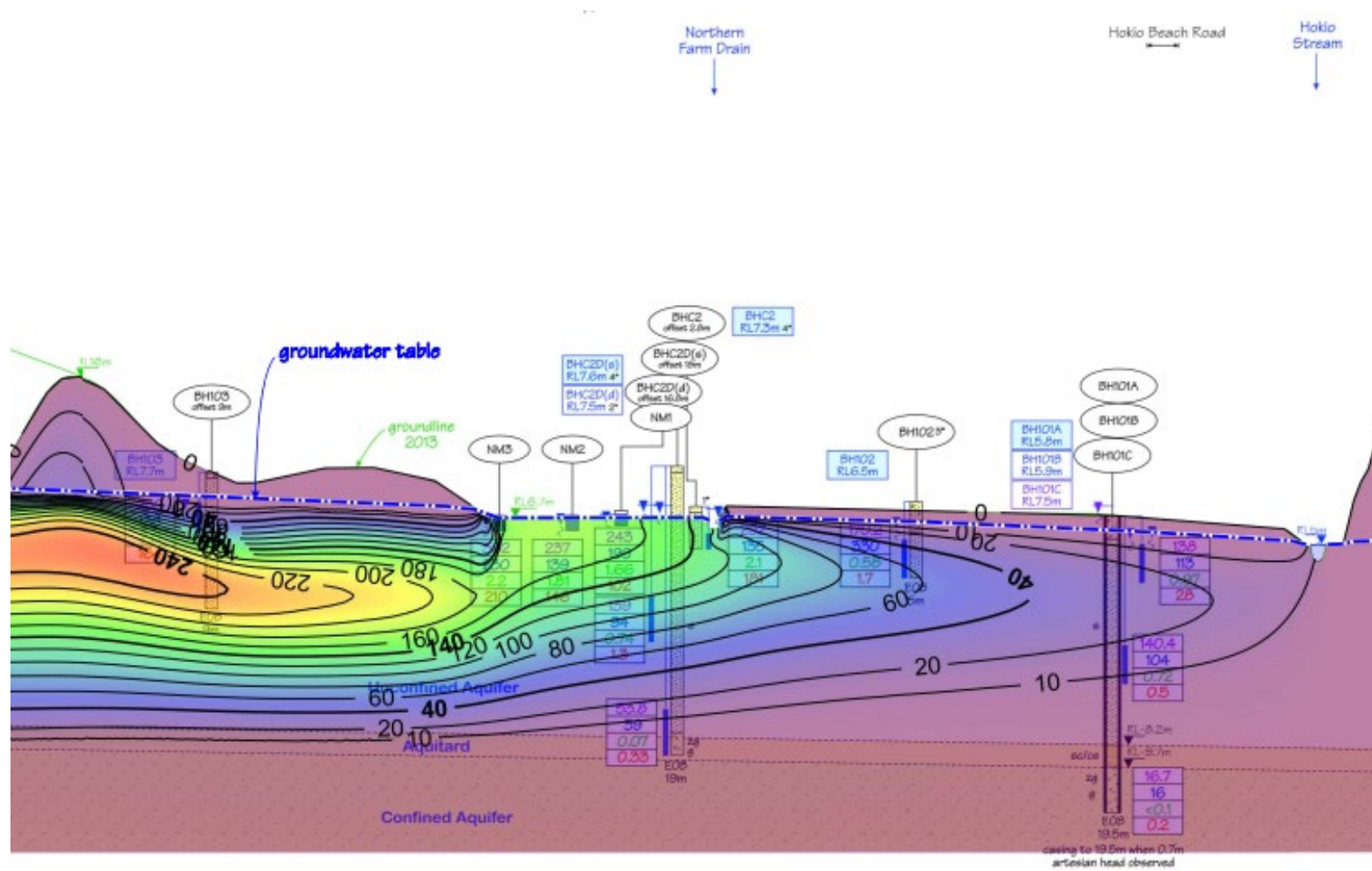
Option for dilute solute removal



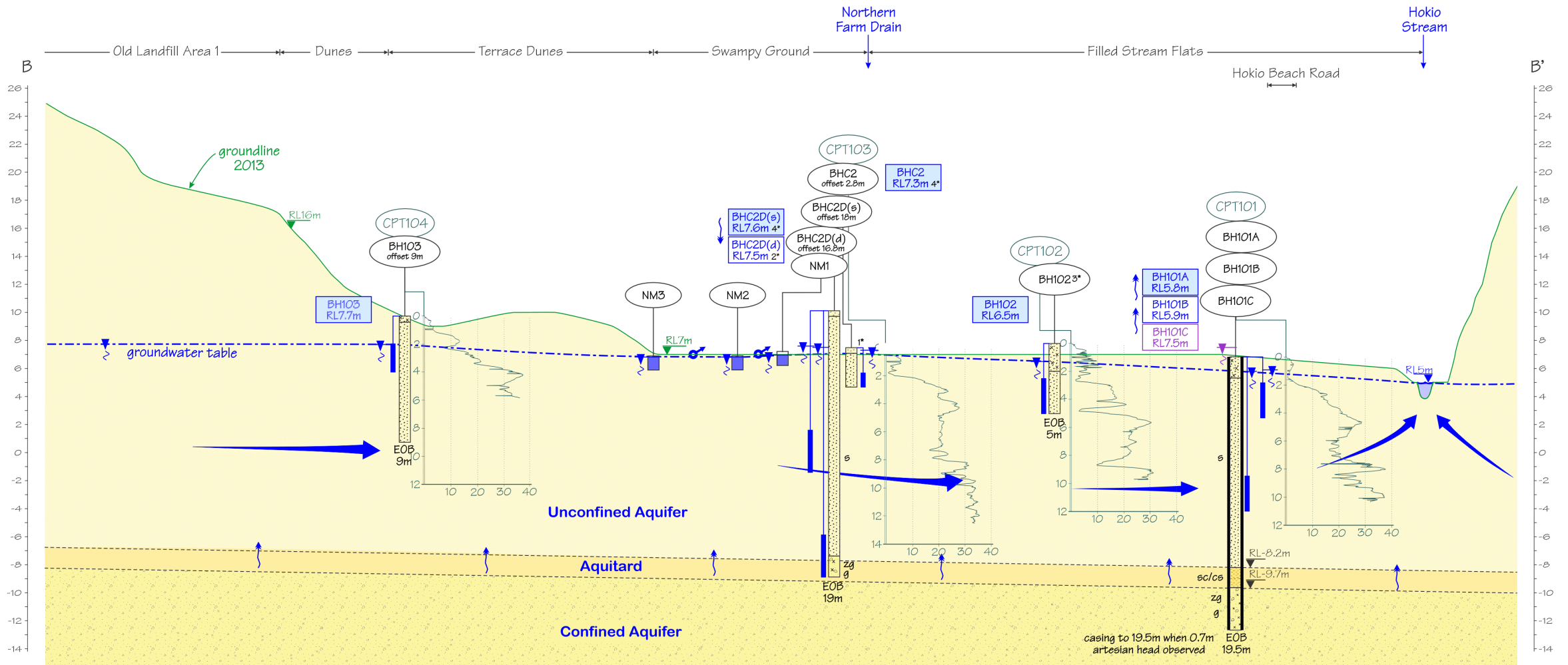
Horowhenua
2040 Vision



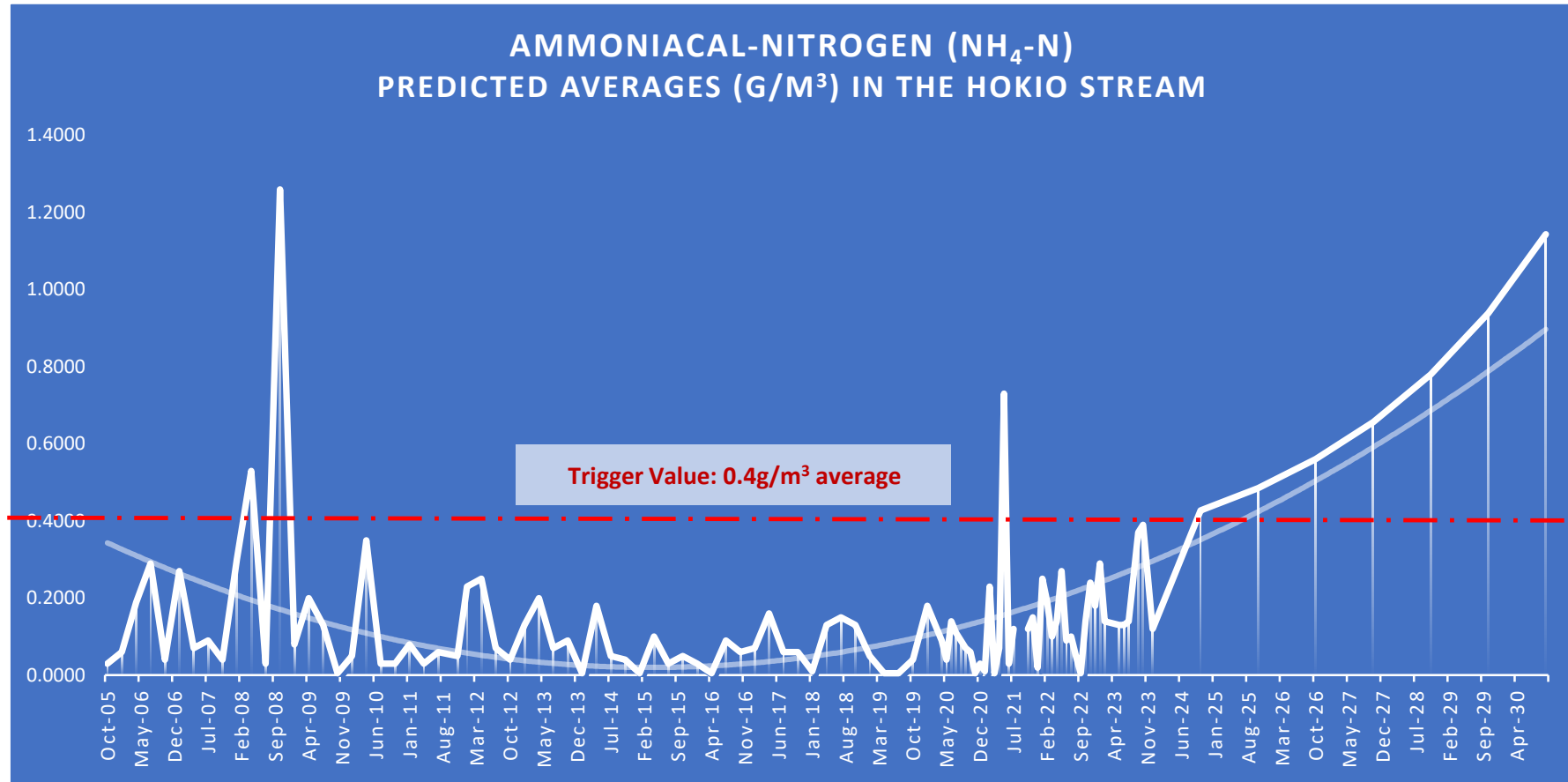
Present extent of plume



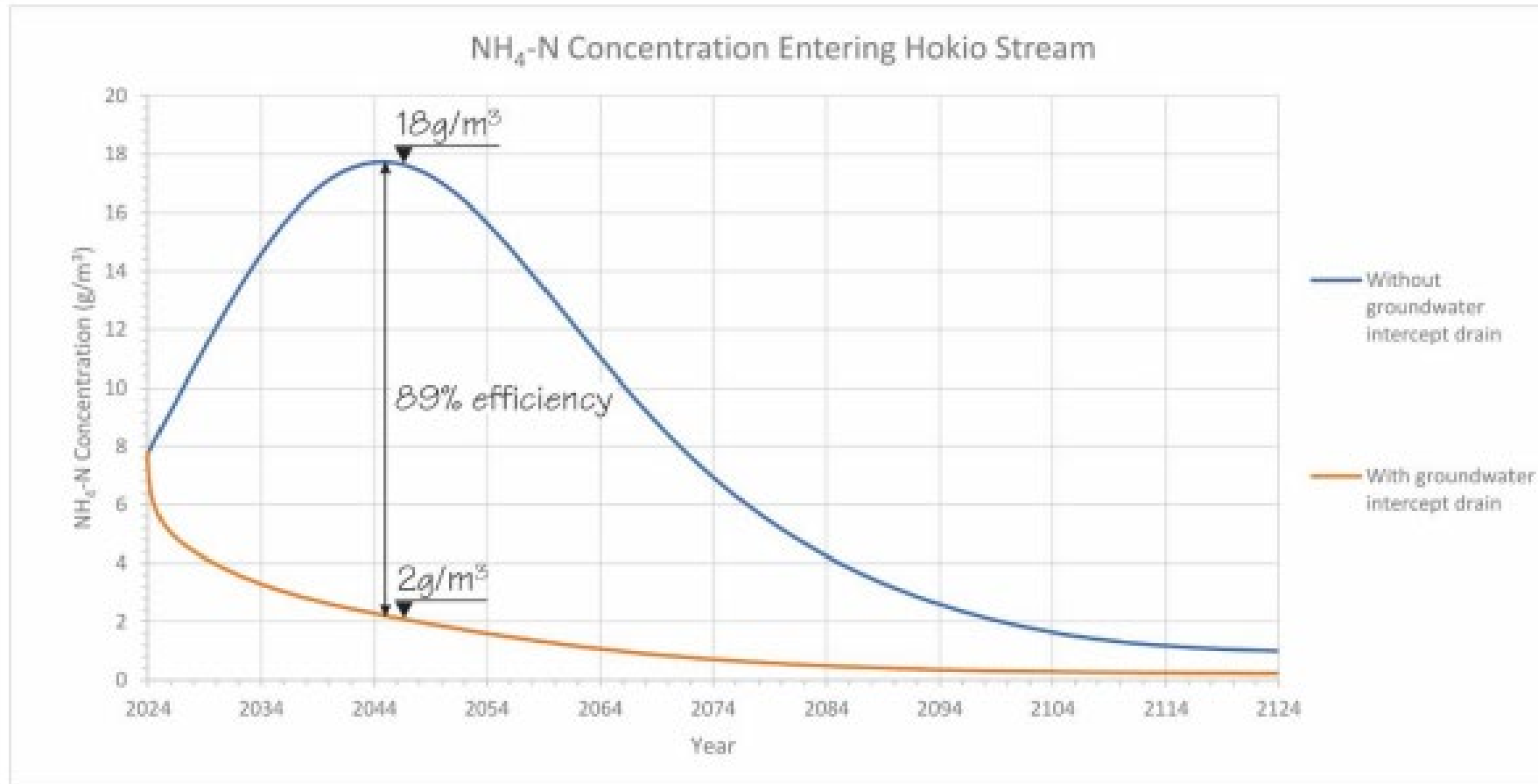
Present extent of plume



Leachate Concentrations in Hōkio Stream: Current and Future Predicted Averages without extraction



Leachate Concentration: With & without extraction

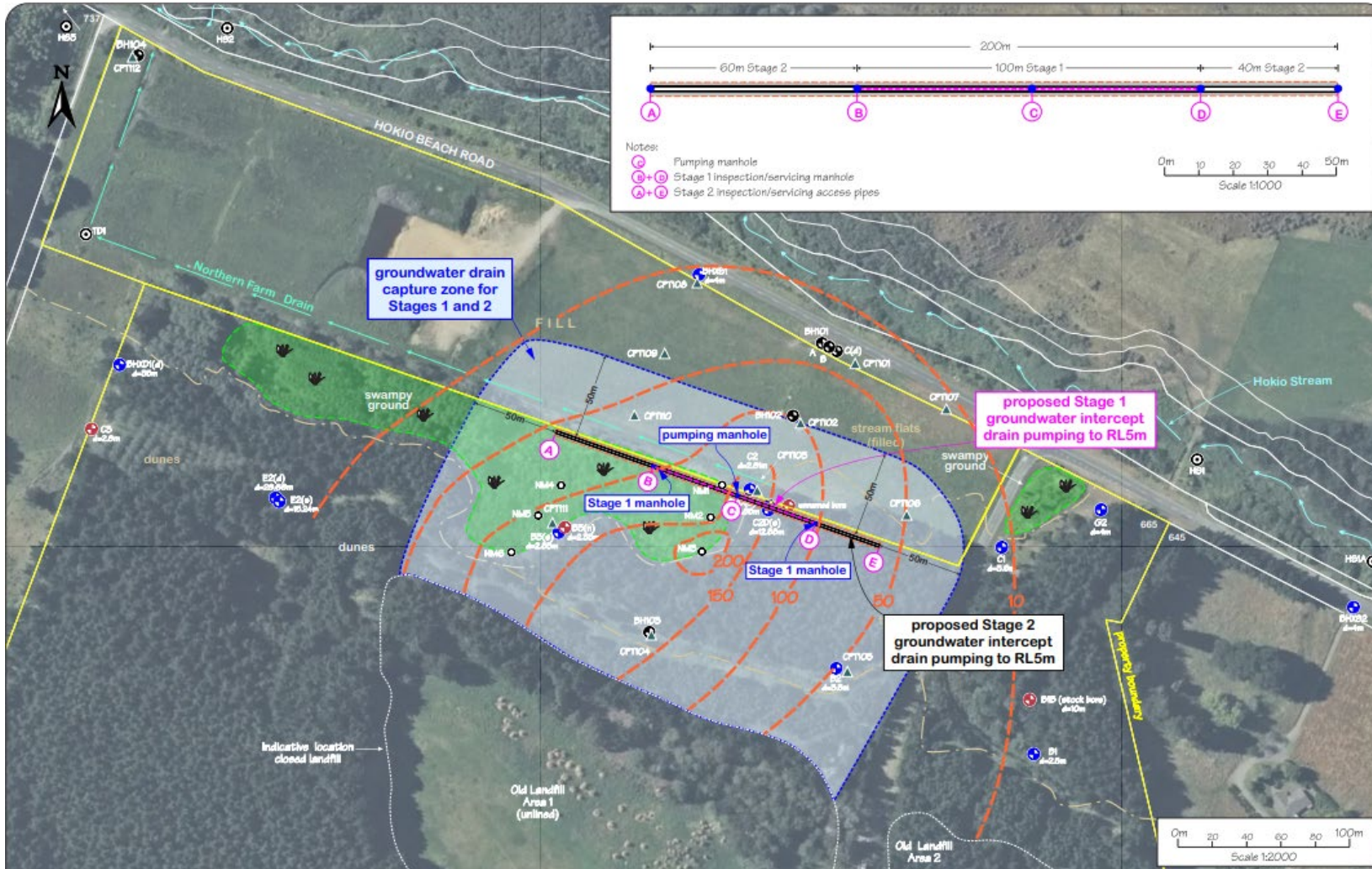


BPO Selection process

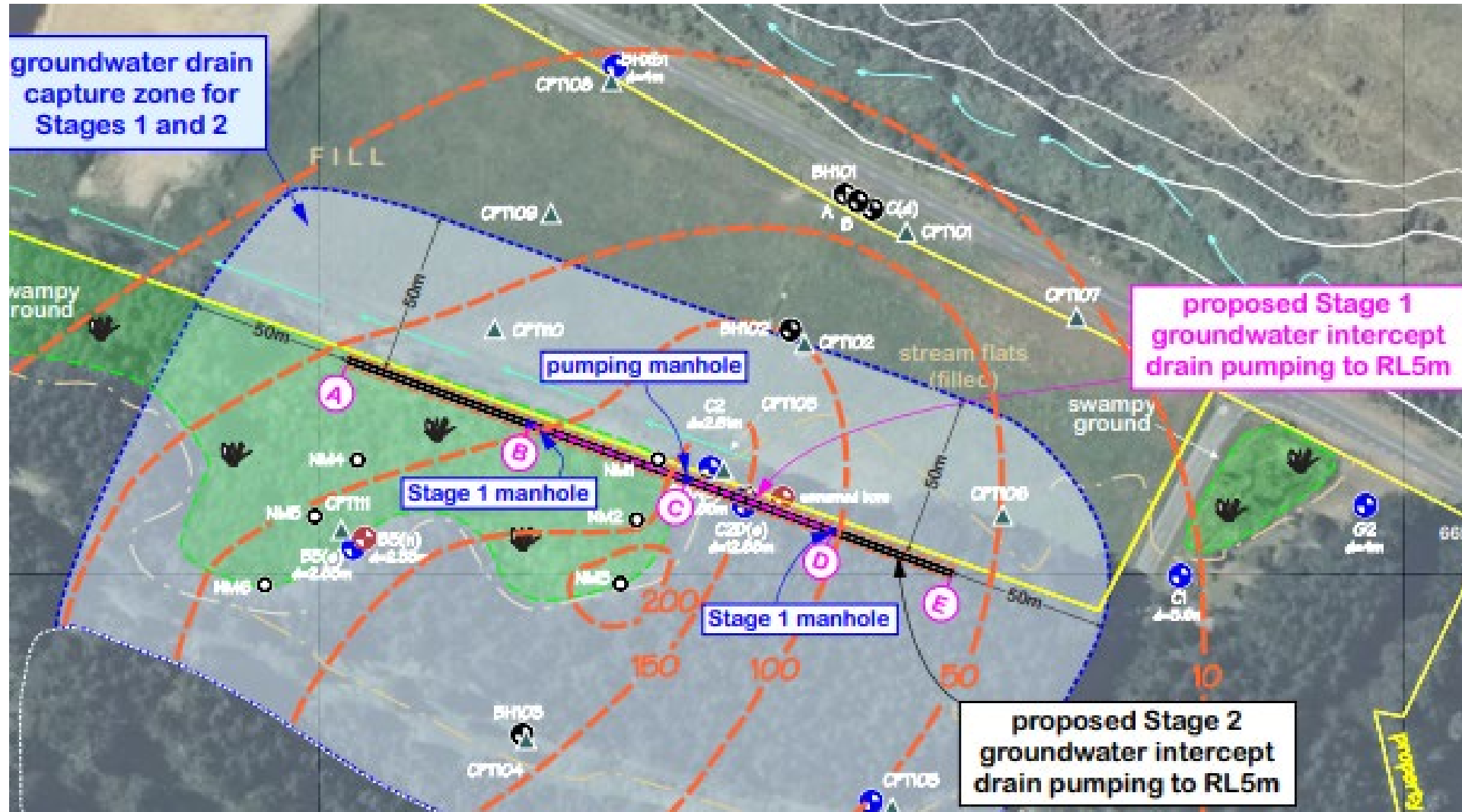
BPO 1	Do nothing
BPO 2	Do nothing but provide ecological package offsets
BPO 3	Full trench (200m) extraction and 100% (360m ³ /day) discharge to sewer
BPO 4	Full trench (200m) extraction and complete on-site treatment (and re-use/irrigation on site)
BPO 5	Partial trench extraction (say 100m) and 100% discharge to sewer
BPO 6	Partial trench extraction (say 100m) and on-site treatment (and re-use/irrigation on site)
BPO 7	Partial or full trench extraction and discharge via dedicated line or road tankers to "The Pot"
BPO 8	Partial or full scale extraction, combined discharge to sewer and on-site treatment (and re-use/irrigation on site)

OPTIONS ASSESSMENT:		BPO 1	BPO 2	BPO 3	BPO 4	BPO 5	BPO 6	BPO 7	BPO 8
Legal Context	Conformance with Environment Court Order – Discharge Permit 6010 cl. 2A(a)	No	No	Yes	Yes	Yes	Yes	Yes	Yes
Compliance Context	No significant increases in the concentrations between monitoring sites HS1A and HS3, for parameters exceeding the Trigger values contained in Table C1 at Site HS3 NH ₄ -N < 2.1g/m ³ ; 0.4g/m ³ average	No	Possibly	Yes	Yes	Possibly	Possibly	Possibly	Possibly
Consenting Context	Would a consent be obtainable within an acceptable timeframe and with acceptable technical ease (?)	Yes	Yes	Yes	Possibly	Yes	Possibly	Possibly	Possibly
Environmental Context	Low to minor environmental impacts	No	Possibly	Yes	Yes	Yes	Possibly	Possibly	Possibly
Social Acceptance Context	Iwi perspective / NLG perspective / general public perspective	No	Possibly	Possibly	Possibly	Possibly	Possibly	Possibly	Possibly
Technical Context	Technically difficult or complex or straightforward of implementing Option with a high or low likelihood of success	straightforward	straightforward	straightforward	slightly complex	straightforward	slightly complex	straightforward	highly complex
Financial Context	What are the indicative capital (Capex) costs and operational (O&M) costs	Low Cost	Medium Cost	Medium Cost	High Cost	Medium Cost	Medium Cost	High Cost	Medium Cost

Staged installation (Stage I, Stage II)



Staged installation (Stage I, Stage II)



Stage I : 100m trench

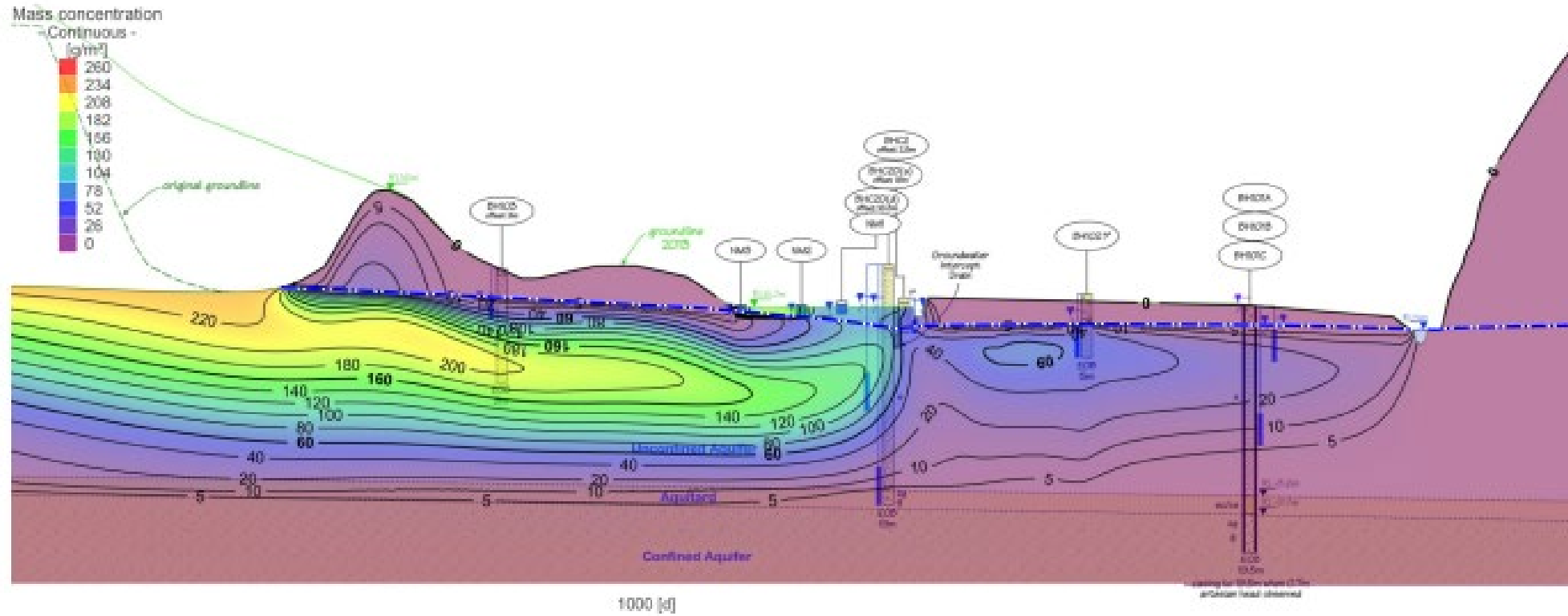


Figure 6A: Mass Concentration Estimation at 1,000 Days
approx. 2026

Result - 2045

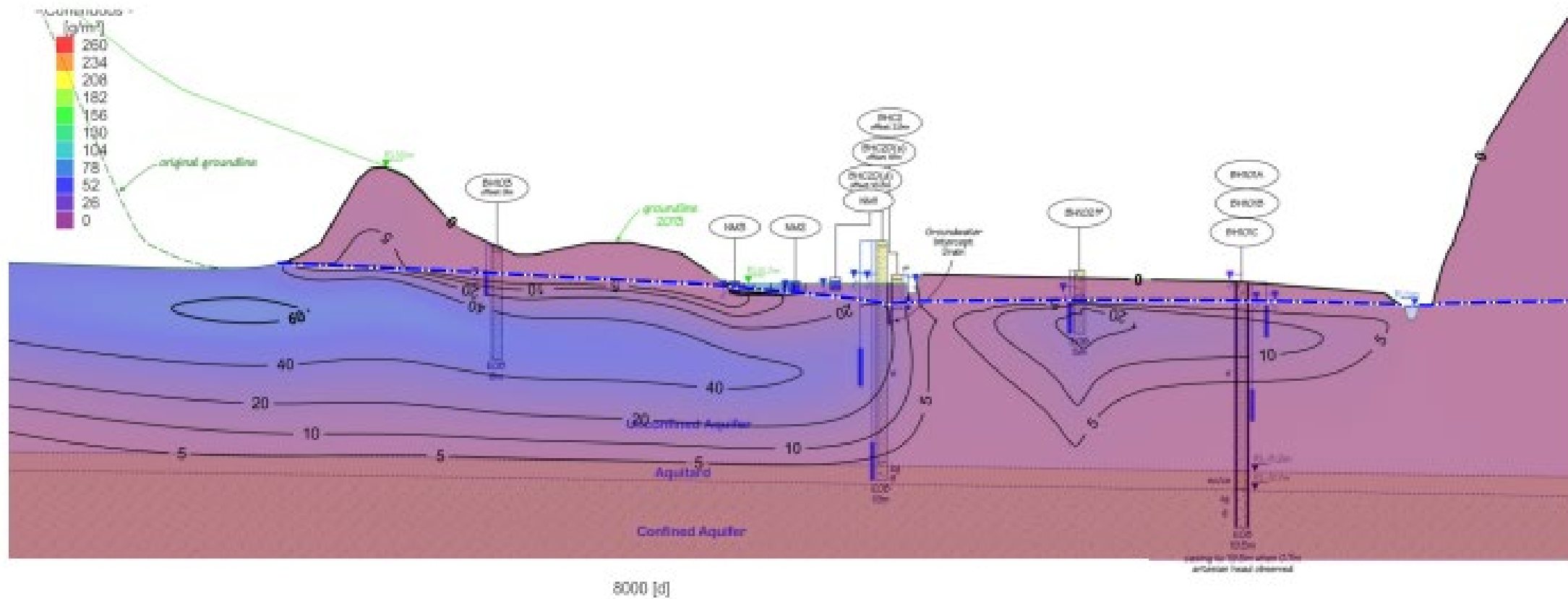


Figure 6B: Mass Concentration Estimation at 8,000 Days approx. 2045

Discharge NH_4N



Levin WWTP

Extraction rates

- Stage I — 220m³/day
- Stage II — 360m³/day

- WWTP – Present NH_4N loadings39g/m³/day
- WWTP – Stage II NH_4N loadings**40.5/gm³/day**
- Increase on daily NH_4N loadings**3.9%**



Est. Capital Costs

- Consenting: \$535,000
- Construction: \$841,000
- Contingencies: \$316,000

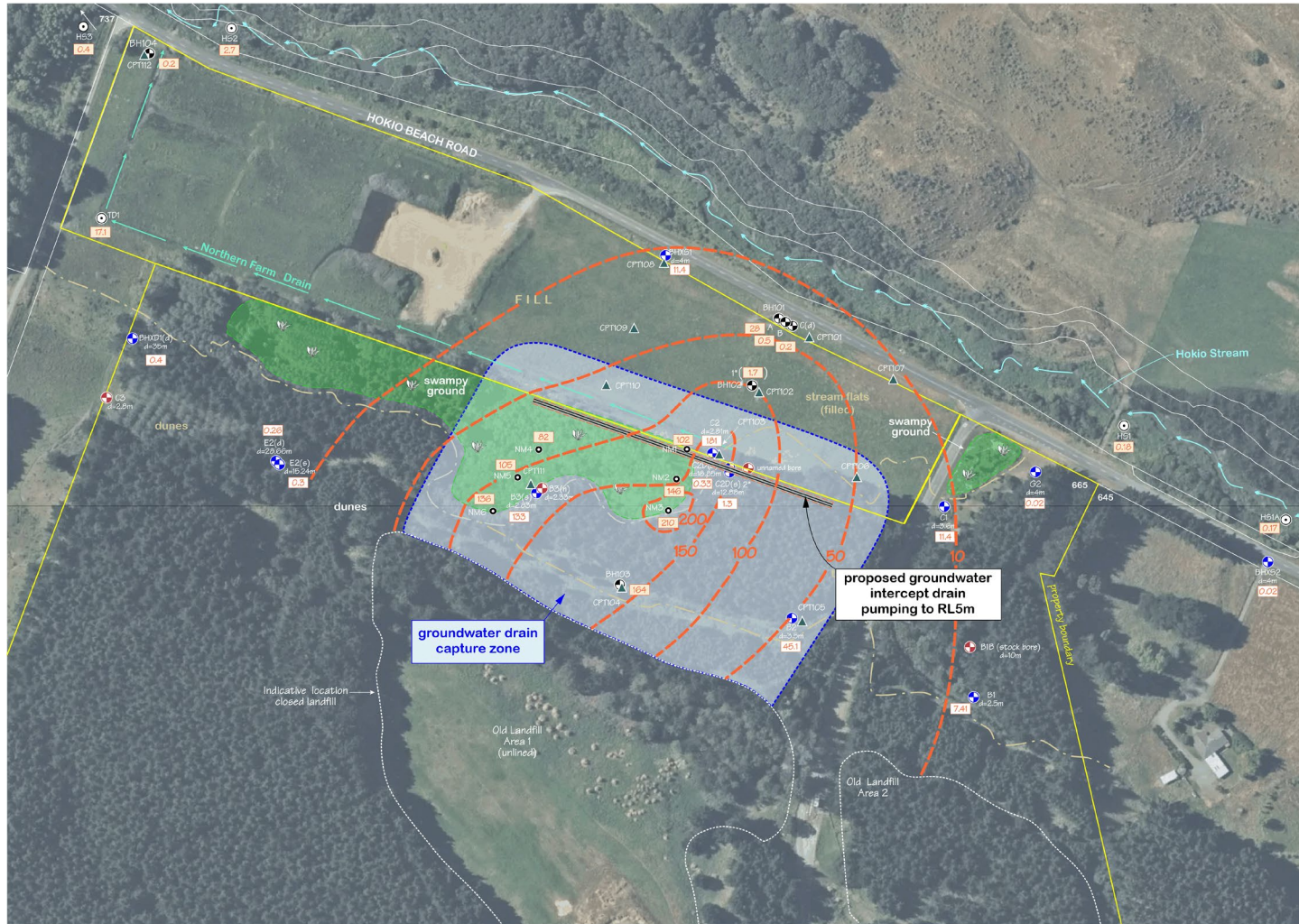
Total \$1,682,000

Timelines

- Consenting: mid - late 2024/25
- Tendering: early 2025/26
- Build: mid 2025/26

End

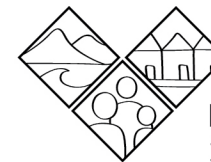
Extraction zone of dilute solute - (Ammoniacal nitrogen)





Archaeological Report- Post Production Thinning

Source: Insite Archaeology – Daniel Parker
Heritage NZ 2023/526



Horowhenua
2040 Vision





Background

- Management of a pine forest – Levin Landfill
- Thinning of pines
- J Turkington
- Site archaeological status
- Heritage NZPT -Archaeological Authority-2023/526



Pole length logs





Arrangements to have representatives ready for archaeological discovery's

Representatives

- C Rudd
- Dean Wilson
- Deanna Paki
- Parekura MacGregor



Landscape – More open





Expected 'archaeological' finds



Finds thus far (2 new)





'Clear felling' at known midden site - S25/95



Summary

- Discovery supports previous discovery's regarding archaeological significance of site (Taylor, 2002, Taylor Sutton & Parker, 2004)
- Discovery aligns with information expressed by members of Muaūpoko , Ngāi Tara, Ngāti Pareraukawa, hapu of Ngāti Huia
- Potential for further midden and oven discoveries