

## **SCHEDULE 8: Structure Plans**

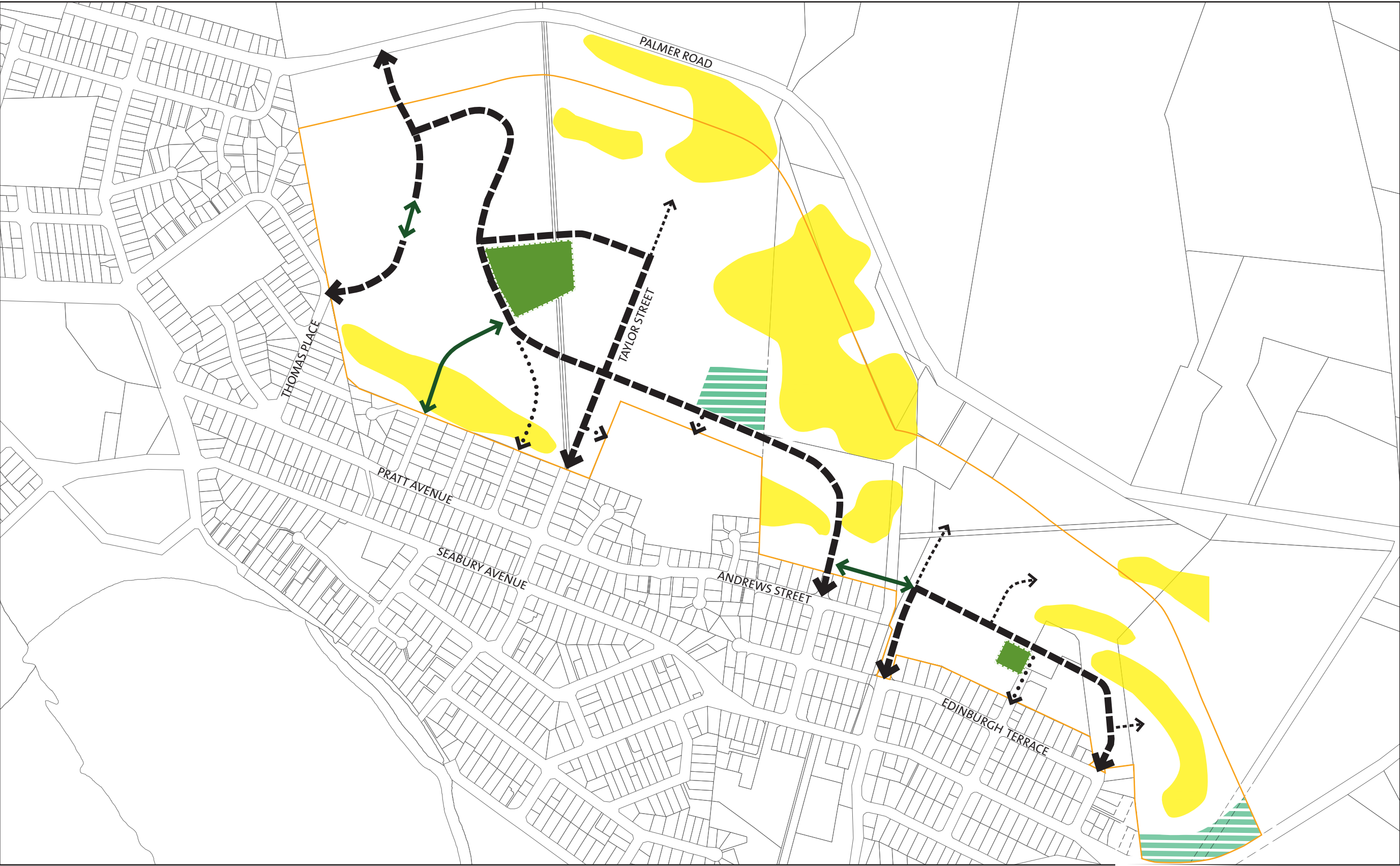
---

### **STRUCTURE PLANS**

## **SCHEDULE 8: Structure Plans**

---

This page has been intentionally left blank.



- Existing Roads
- Urban Collector Road
- Urban Local Road
- Greenbelt Collector Road
- Greenbelt Local Road
- Reserve
- Open Space
- Suburban Commercial
- Indicative Landscape Feature
- Indicative Landscape / Pedestrian Connection
- Existing Trees Retained
- Heritage Tree
- Intersection Modification
- Structure Plan Area Boundary
- Structure Plan to be read in conjunction with District Plan Maps



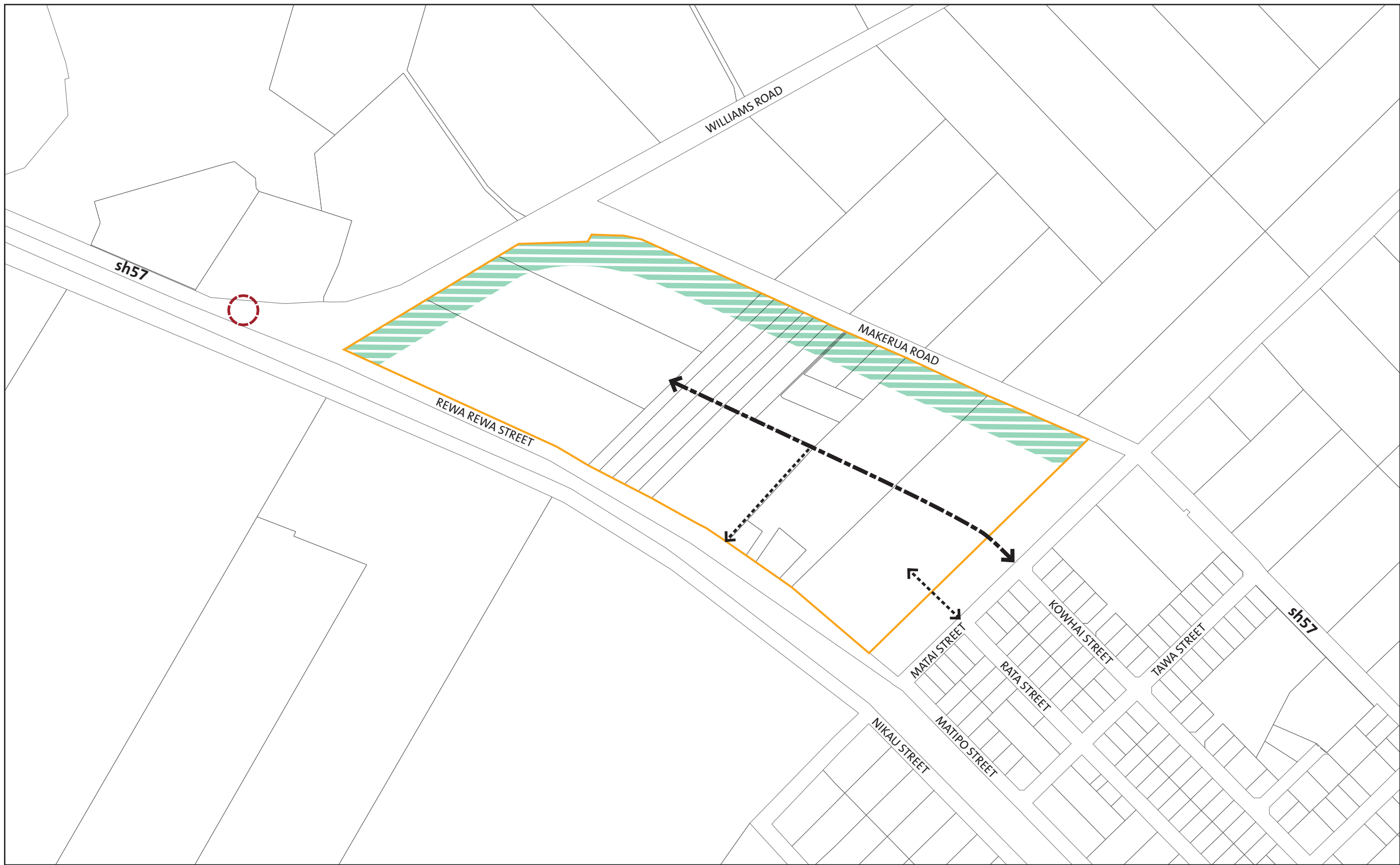
- Existing Roads
- Urban Collector Road
- Urban Local Road
- Greenbelt Collector Road
- Greenbelt Local Road
- Reserve
- Open Space
- Suburban Commercial
- Indicative Landscape Feature
- Indicative Landscape / Pedestrian Connection
- Existing Trees Retained
- Heritage Tree
- Intersection Modification
- Structure Plan Area Boundary
- Structure Plan to be read in conjunction with District Plan Maps

# Horowhenua District Plan

## Structure Plan 02

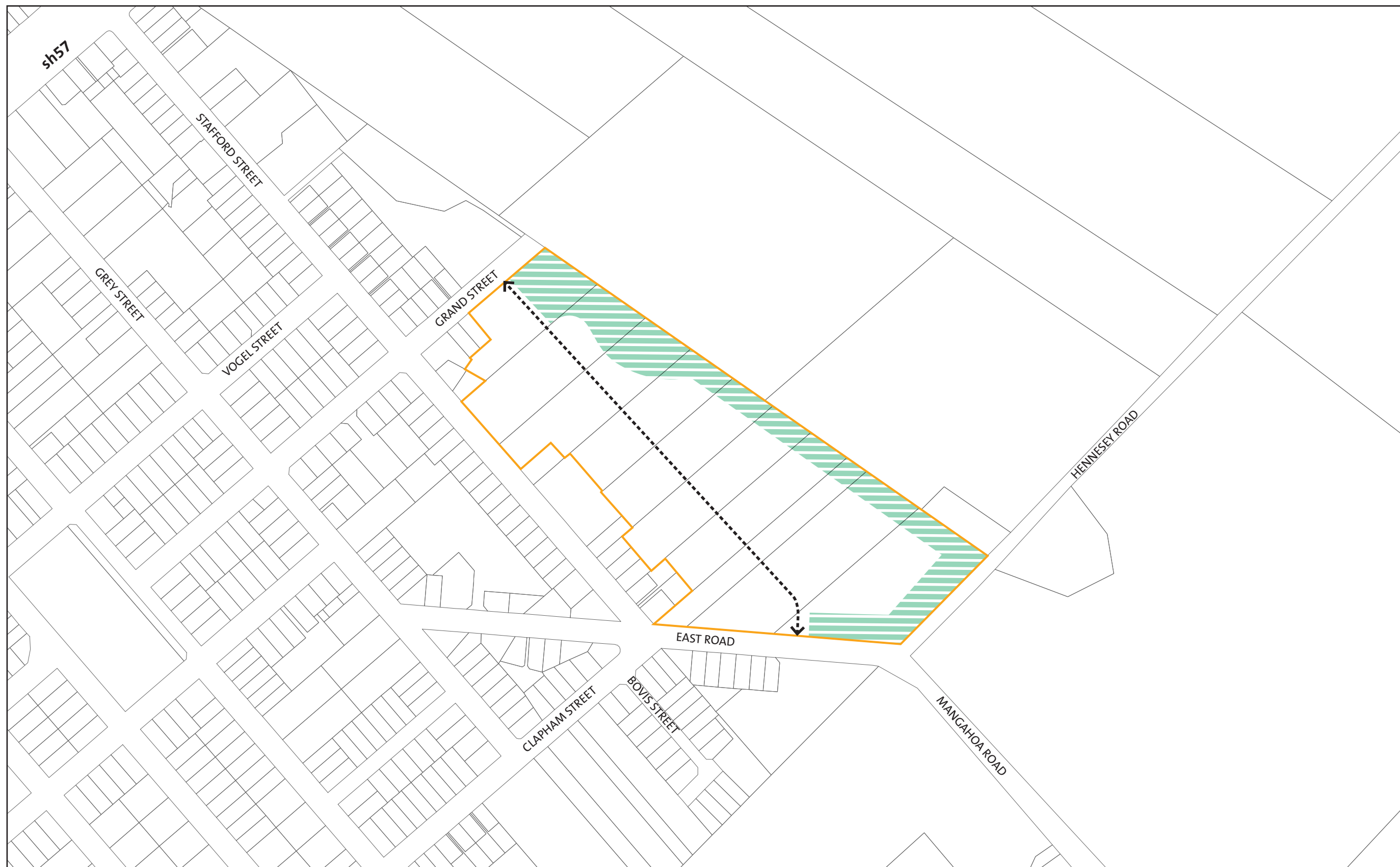
Foxton - Donnelly Road, Hetta Street and Norbiton Road

Scale: 1:5000 @ A3

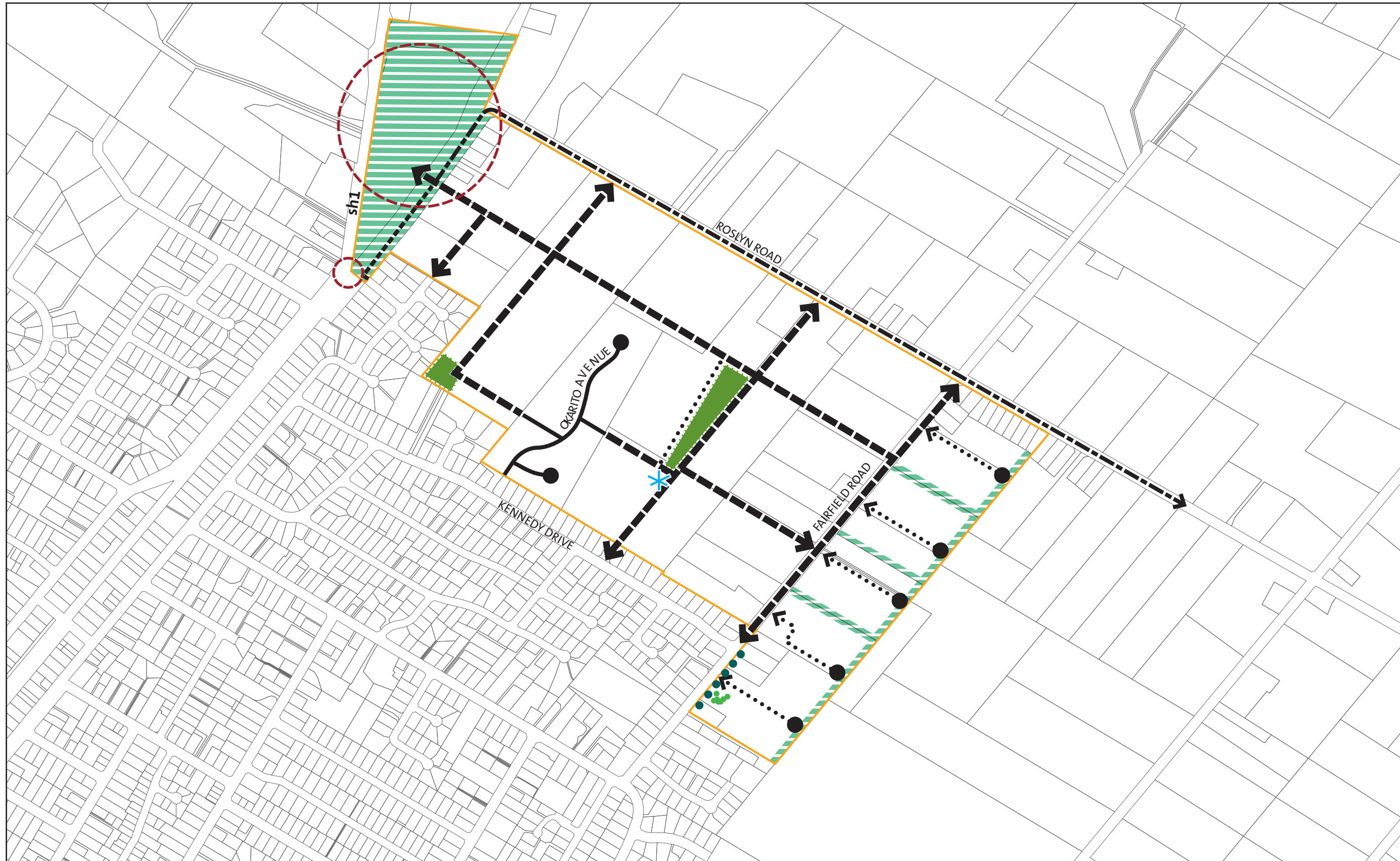


- Existing Roads
- Urban Collector Road
- Urban Local Road
- Greenbelt Collector Road
- Greenbelt Local Road
- Reserve
- Open Space
- Suburban Commercial
- Indicative Landscape Feature
- Indicative Landscape / Pedestrian Connection
- Existing Trees Retained
- Heritage Tree
- Intersection Modification
- Structure Plan Area Boundary
- Structure Plan to be read in conjunction with District Plan Maps



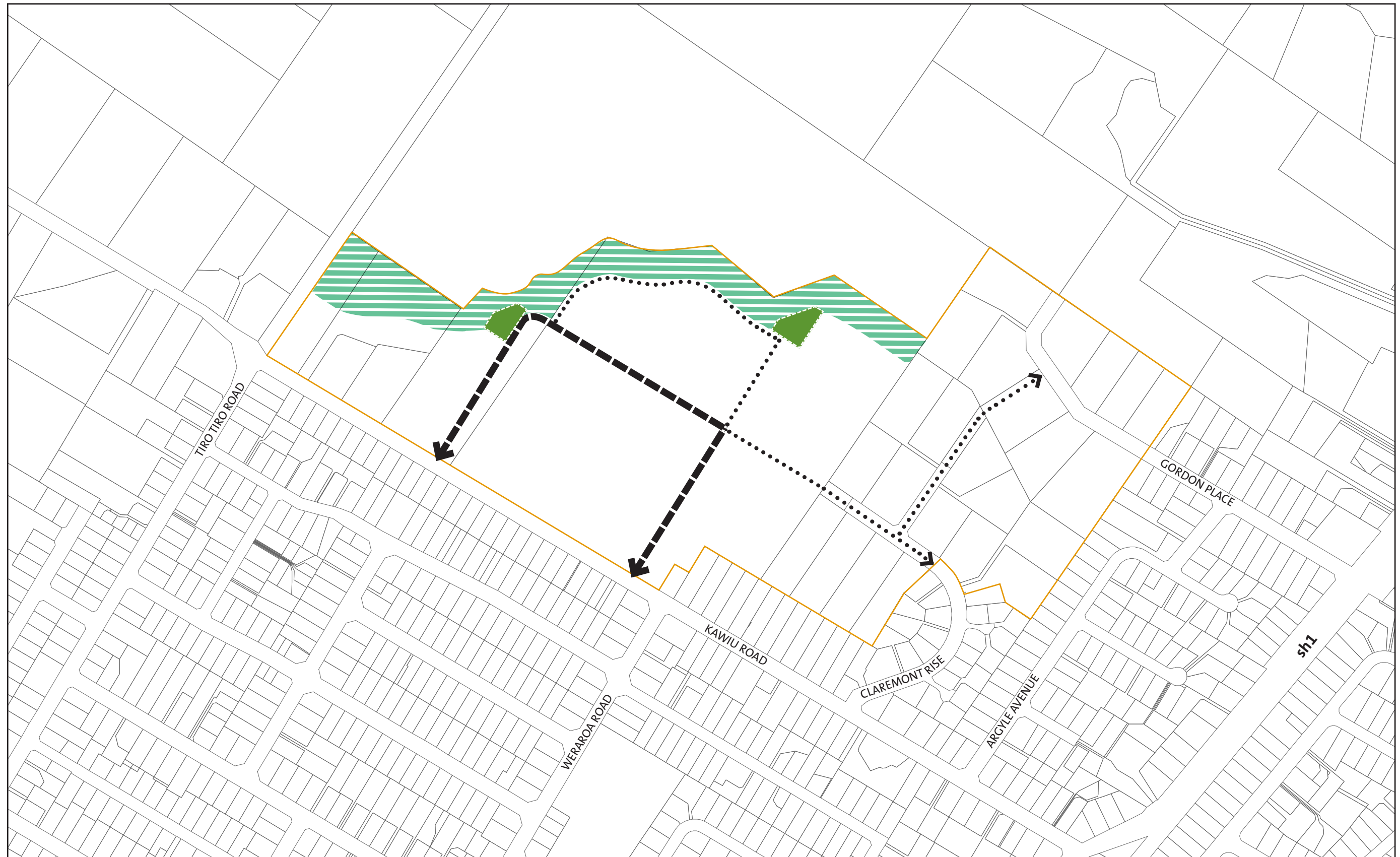


- Existing Roads
- Urban Collector Road
- Urban Local Road
- Greenbelt Collector Road
- Greenbelt Local Road
- Reserve
- Open Space
- Suburban Commercial
- Indicative Landscape Feature
- Indicative Landscape / Pedestrian Connection
- Existing Trees Retained
- Heritage Tree
- Intersection Modification
- Structure Plan Area Boundary
- Structure Plan to be read in conjunction with District Plan Maps



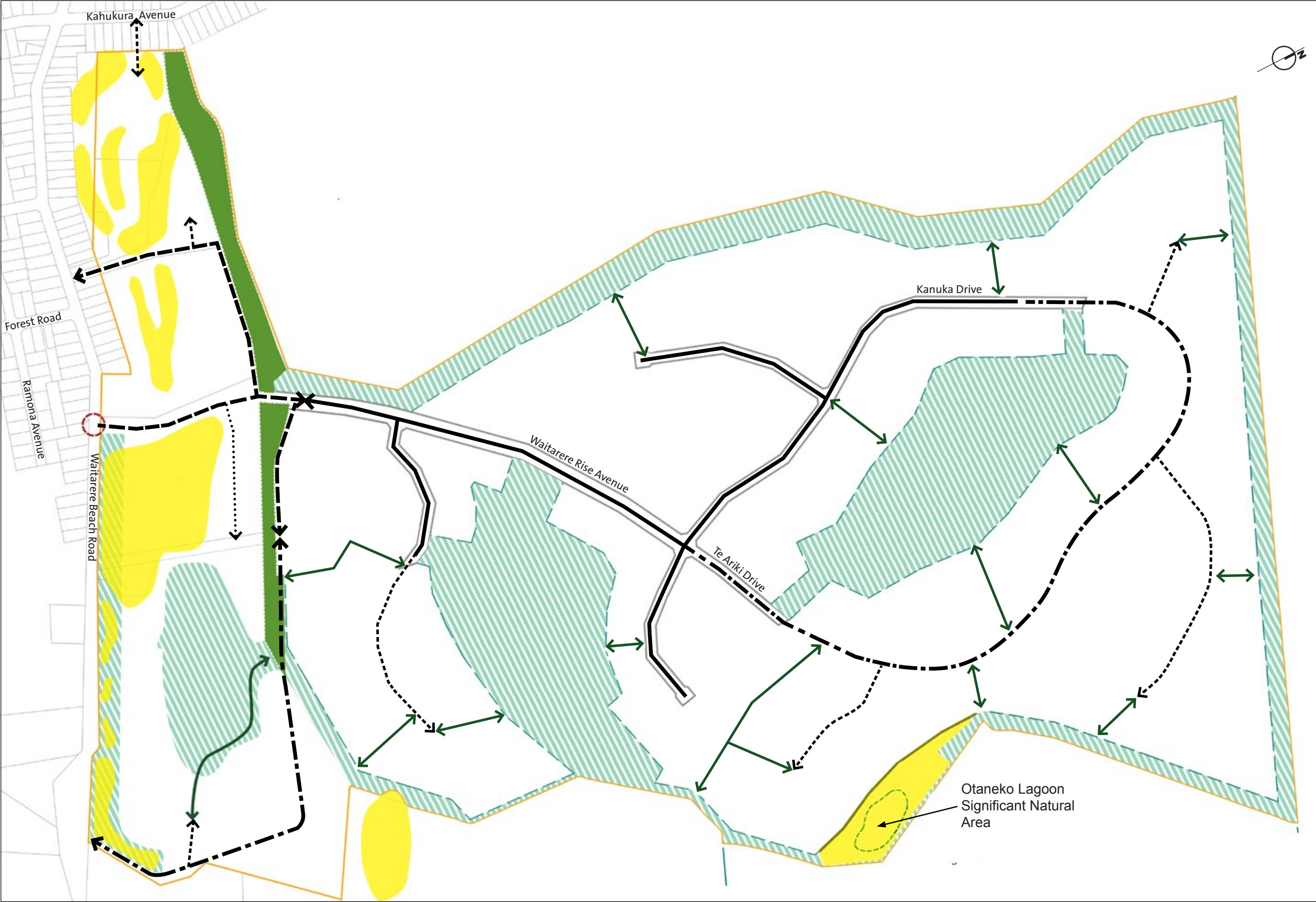
- Existing Roads
- Urban Collector Road
- Urban Local Road
- Greenbelt Collector Road
- Greenbelt Local Road
- Reserve
- Open Space
- Suburban Commercial
- Indicative Landscape Feature
- Indicative Landscape / Pedestrian Connection
- Existing Trees Retained
- Heritage Tree
- Intersection Modification
- Structure Plan Area Boundary
- Structure Plan to be read in conjunction with District Plan Maps



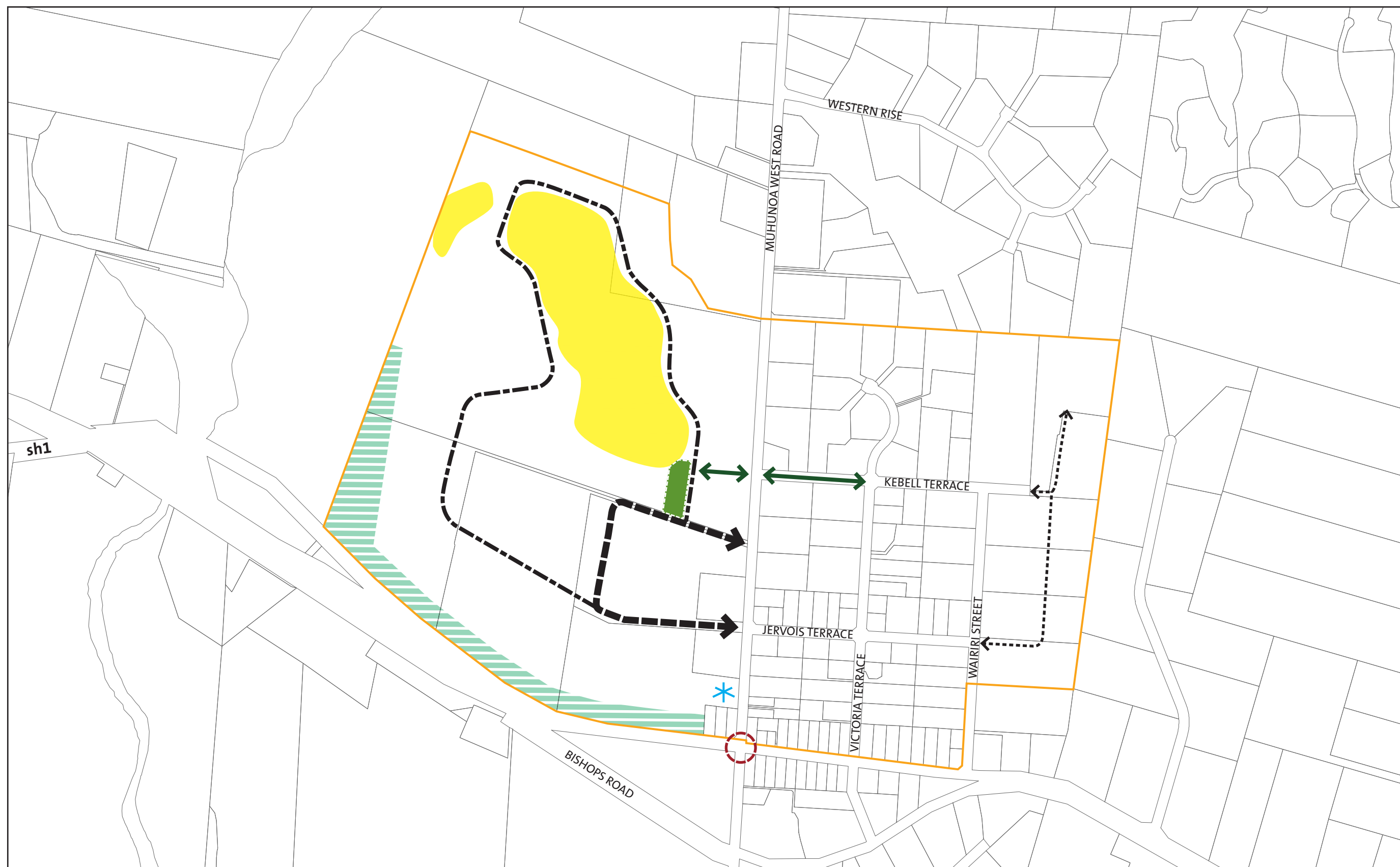


- Existing Roads
- Urban Collector Road
- Urban Local Road
- Greenbelt Collector Road
- Greenbelt Local Road
- Reserve
- Open Space
- Suburban Commercial
- Indicative Landscape Feature
- Indicative Landscape / Pedestrian Connection
- Existing Trees Retained
- Heritage Tree
- Intersection Modification
- Structure Plan Area Boundary
- Structure Plan to be read in conjunction with District Plan Maps





- Existing Roads
- Urban Collector Road
- Urban Local Road
- Greenbelt Collector Road
- Greenbelt Local Road
- Reserve
- Open Space
- Suburban Commercial
- Indicative Landscape Feature
- Indicative Landscape / Pedestrian Connection
- Existing Trees Retained
- Heritage Tree
- Intersection Modification
- Structure Plan Area Boundary
- Structure Plan to be read in conjunction with District Plan Maps



- Existing Roads
- Urban Collector Road
- Urban Local Road
- Greenbelt Collector Road
- Greenbelt Local Road
- Reserve
- Open Space
- Suburban Commercial
- Indicative Landscape Feature
- Indicative Landscape / Pedestrian Connection
- Existing Trees Retained
- Heritage Tree
- Intersection Modification
- Structure Plan Area Boundary
- Structure Plan to be read in conjunction with District Plan Maps



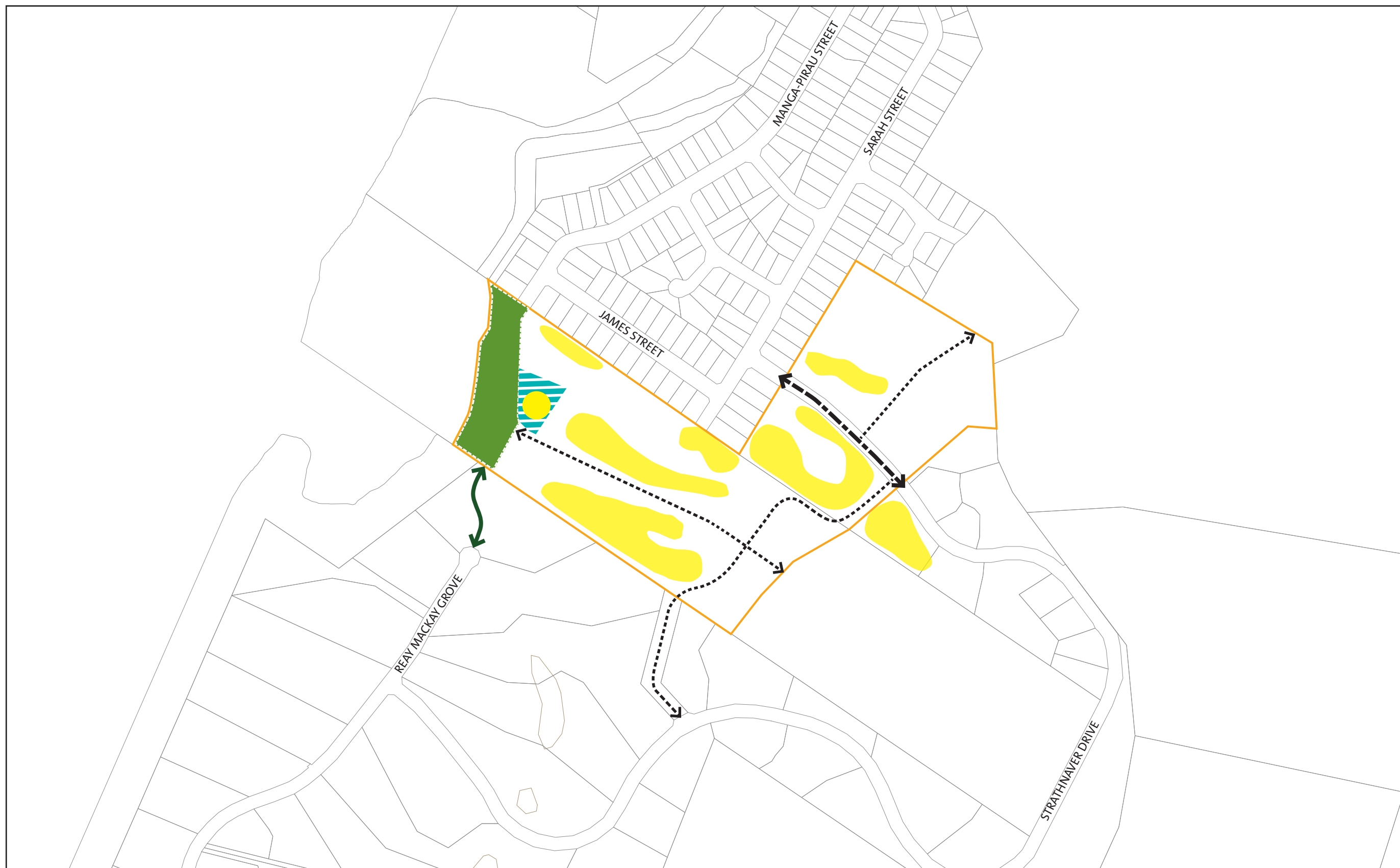


- Existing Roads
- Urban Collector Road
- Urban Local Road
- Greenbelt Collector Road
- Greenbelt Local Road
- Reserve
- Open Space
- Suburban Commercial
- Indicative Landscape Feature
- Indicative Landscape / Pedestrian Connection
- Existing Trees Retained
- Heritage Tree
- Intersection Modification
- Structure Plan Area Boundary
- Structure Plan to be read in conjunction with District Plan Maps

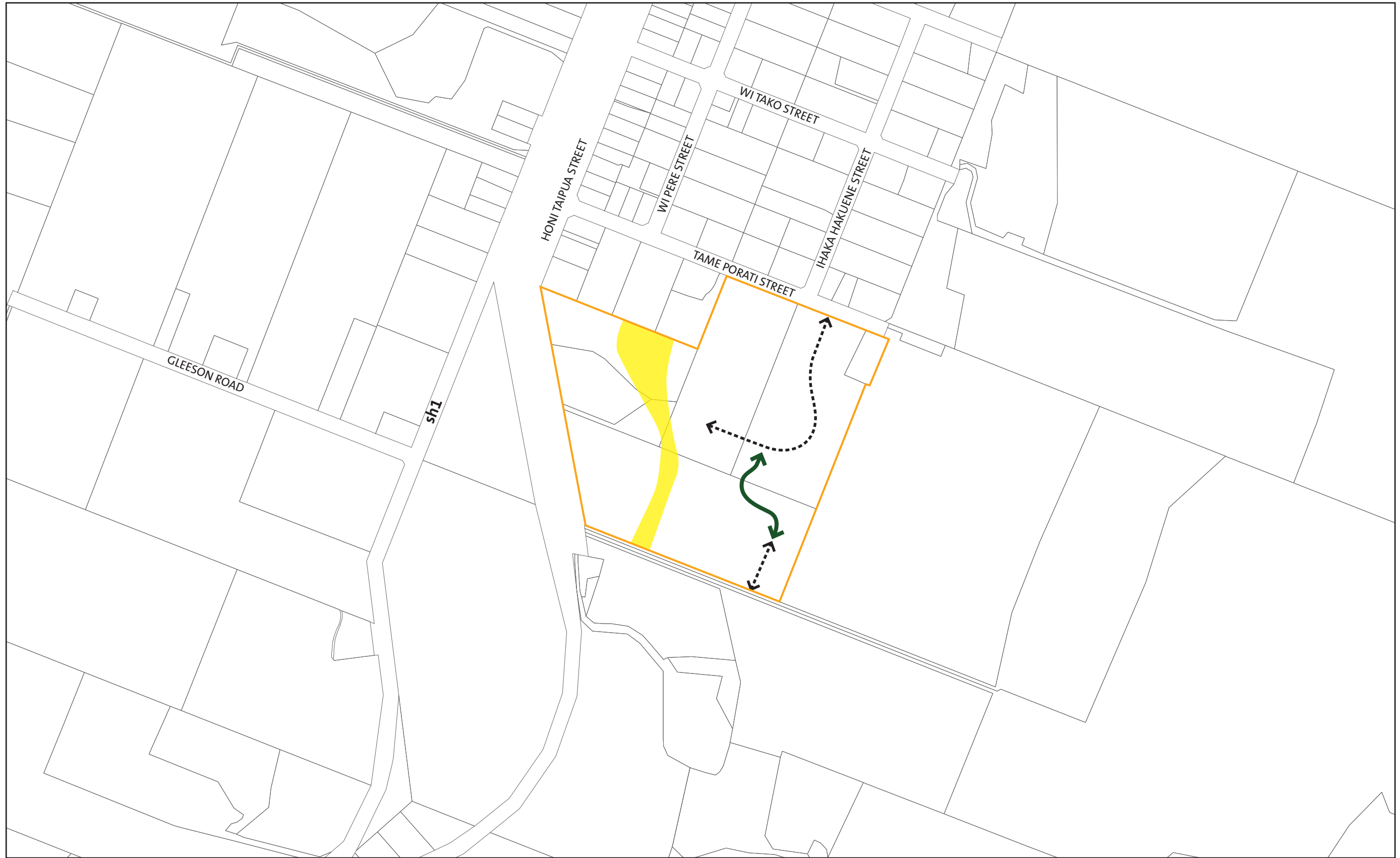


- Existing Roads
- Urban Collector Road
- Urban Local Road
- Greenbelt Collector Road
- Greenbelt Local Road
- Reserve
- Open Space
- Suburban Commercial
- Indicative Landscape Feature
- Indicative Landscape / Pedestrian Connection
- Existing Trees Retained
- Heritage Tree
- Intersection Modification
- Structure Plan Area Boundary
- Structure Plan to be read in conjunction with District Plan Maps



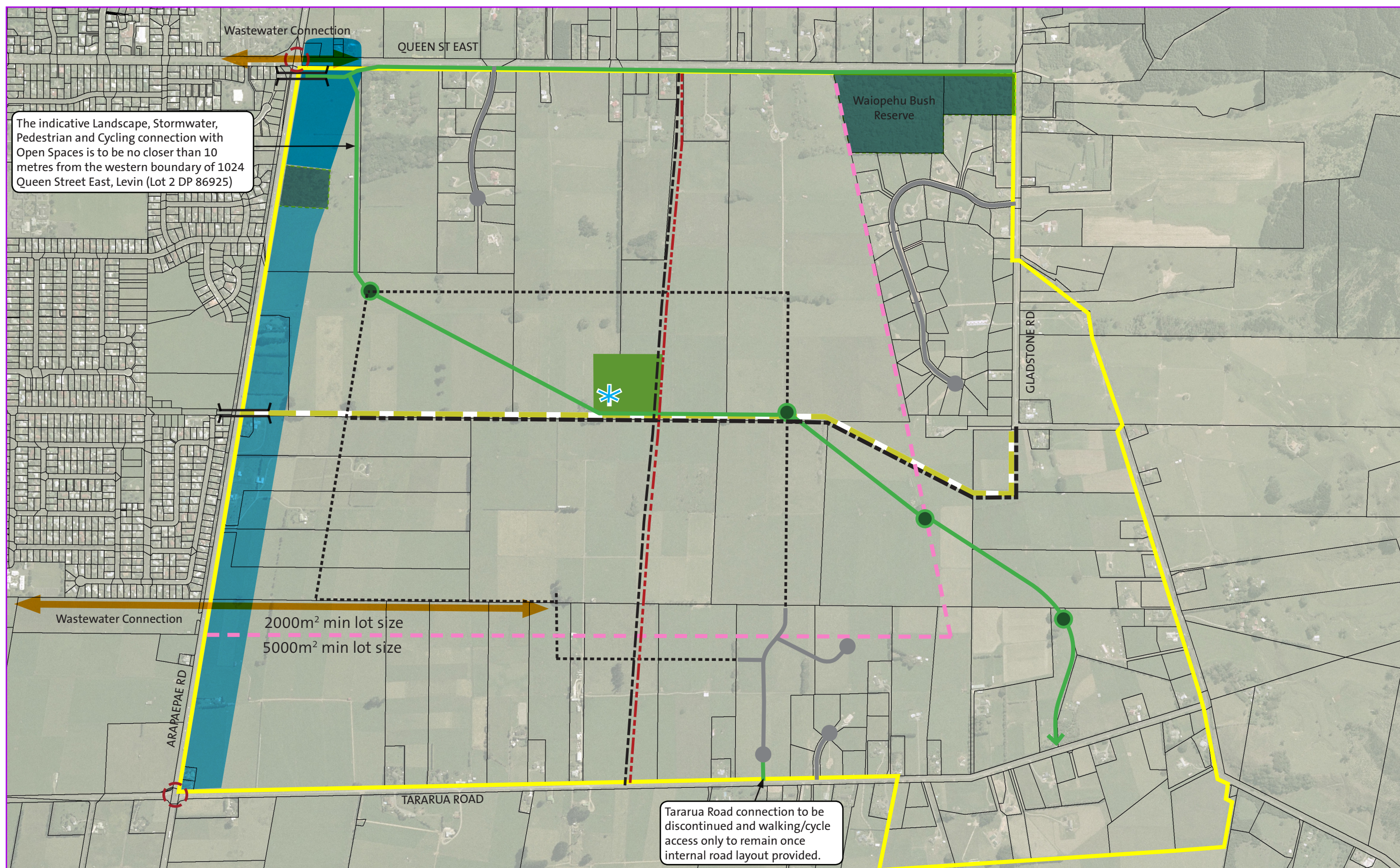


- Existing Roads
- Urban Collector Road
- Urban Local Road
- Greenbelt Collector Road
- Greenbelt Local Road
- Reserve
- Open Space
- Suburban Commercial
- Indicative Landscape Feature
- Indicative Landscape / Pedestrian Connection
- Existing Trees Retained
- Heritage Tree
- Intersection Modification
- Structure Plan Area Boundary
- Structure Plan to be read in conjunction with District Plan Maps



- Existing Roads
  - Urban Collector Road
  - Urban Local Road
  - Greenbelt Collector Road
  - Greenbelt Local Road
  - Reserve
  - Open Space
  - Suburban Commercial
  - Indicative Landscape Feature
  - Indicative Landscape / Pedestrian Connection
  - Existing Trees Retained
  - Heritage Tree
  - Intersection Modification
  - Structure Plan Area Boundary
- Structure Plan to be read in conjunction with District Plan Maps





- Existing Roads
- Greenbelt Collector Road
- Greenbelt Local Road
- Reserve (public)
- 10m Landscape Buffer with Road Reserve
- Existing Vegetation Block Retained
- Future Local Commercial
- Density Change
- Transport Corridor (Future upgrades)
- Urban Growth Area Boundary
- Landscape, Stormwater, Pedestrian and Cycling Connection with Open Spaces
- Future Pedestrian Overbridge
- State Highway Intersection Modification
- High Voltage Transmission Lines

## Horowhenua District Plan

## Structure Plan 13

Gladstone Greenbelt Levin - Queen Street / Tararua Road

Scale: 1:10,000 @ A3

The location of future roads and the pedestrian accessway/cycleway/stormwater path through the Gladstone Greenbelt Zone is indicative only, and the final alignment and the properties affected will be determined as part of the subdivision consent process. It is anticipated that the pedestrian access-way/cycleway/stormwater path will follow a combination of roads, reserves, or corridors vested in the Council upon subdivision



## **SCHEDULE 8: Structure Plans**

---

This page has been intentionally left blank.