



What's On

in and around
Horowhenua

Summer 2019/20



A collection of events happening in the Horowhenua
this December, January and February.

Horowhenua



December 2019



All Summer (1 November - 2 March)

Anne Frank 'Let me be myself' Exhibition

Where: Te Awahou Nieuwe Stroom
(More information on page 6)

All December

Trig Walkway & Kohitere Forest; Through the seasons on Canvas

Where: Te Takeretanga o Kura-hau-
pō, Gallery Space
(More information on page 7)



Sunday
1 December

Santa Paws at the Park

When: 9am - 12pm
Where: Kōwhai Park, Levin
(More information on page 8)



Thursday
5 December

Christmas Crafternoon

When: 2pm
Where: Te Takeretanga o Kura-hau-
pō
(More information on page 9)



Saturday
7 December

Christmas in the Park

When: 4pm - 9pm
Where: Adventure Park, Levin
(More information on page 10)



Sunday
8 December

Christmas Crafternoon

When: 2pm
Where: Te Awahou Nieuwe Stroom
(More information on page 9)



Tuesday
10 December

Tea & Tales Christmas

When: 10:30am
Where: Te Awahou Nieuwe Stroom
(More information on page 11)

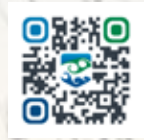


Thursday
12 December

Tea & Tales Christmas

When: 10:30am
Where: Te Takeretanga o Kura-hau-
pō
(More information on page 11)

December 2019



Thursday
12 December

Christmas Crafternoon

When: 2pm

Where: Shannon Library

(More information on page 9)



Friday 13 - Sunday 15
December

Christmas 'Avenue of Trees'

When: 6pm - 8:30pm

Where: Salvation Army Church,
11 Durham Street, Levin

(More information on page 12)



Saturday
14 December

Community Christmas Carnival

When: 3pm - 8pm

Where: Oxford Street Levin & Levin
Domain

(More information on page 13)



Saturday
14 December

Can we ride it?

When: 10am - 8pm

Where: Off The Loop Wake Park,
10 Stewart St, Foxton

(More information on page 14)



Sunday
15 December

Pop-up Eats Summer Sesh

When: 4pm - 8pm

Where: Tokomaru

(More information on page 16-17)



Monday 16 December –
Friday 24 January

Summer Reading Programme

Where: Te Takeretanga o Kura-
hau-pō

(More information on page 18)



Sunday
22 December

Pop-up Eats Summer Sesh

When: 4pm - 8pm

Where: Waitārere Beach

(More information on page 16-17)



Sunday
29 December

Pop-up Eats Summer Sesh

When: 4pm - 8pm

Where: Foxton Beach

(More information on page 16-17)

January 2020



All January

The Divine Alchemist - Exhibition

Where: Te Takeretanga o Kura-hau-pō, Gallery Space

(More information on page 21)



Sunday
5 January

Pop-up Eats Summer Sesh

When: 4pm - 8pm

Where: Waitāreere Beach

(More information on page 16-17)



Monday 6 January –
Monday 2 March

Aquatics Horowhenua New Year Swim Challenge

Where: Levin Aquatic Centre

(More information on page 21)



Monday 6 January –
Saturday 1 February

The Reading Challenge

Where: Libraries Horowhenua

(More information on page 23)



Saturday 25 – Sunday 26
January

Catching Edges 2020

When: 10am

Where: Off The Loop Wake Park,
10 Stewart St, Foxton

(More information on page 24)

February 2020

All February

Bird Song

Where: Te Takeretanga o Kura-hau-pō, Gallery Space

(More information on page 28)



Sunday
16 February

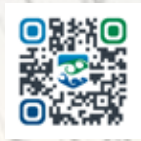
Supercheap Auto's Spectacular Car Show

When: 9am

Where: Shannon Golf Club,
Engles Rd, Shannon

(More information on page 29)

Regular Events



Toddler Time

Every Monday, 2pm,
Te Takeretanga o Kura-hau-pō, Levin

Every Monday, 2:15pm,
Te Awahou Nieuwe Stroom, Foxton

Every Wednesday, 1:30pm,
Shannon Library, Shannon
(More information on page 19)

Tai Chi Classes

Every Monday, 10am,
Te Takeretanga o Kura-hau-pō, Levin
(More information on page 27)

Quiz Night

Every Wednesday, 7pm
Te Takeretanga o Kura-hau-pō, Levin
(More information on page 15)

Local Music Showcase

Every Friday, 12pm
Te Takeretanga o Kura-hau-pō, Levin
(More information on page 7)

Jazz Jam

2nd Sunday of every month,
2pm - 4pm
Te Takeretanga o Kura-hau-pō, Levin
(More information on page 8)

Lego Fun Hour

1st Thursday (every month),
3:30pm - 5pm
Te Takeretanga o Kura-hau-pō, Levin

2nd Thursday (every month),
3:30pm - 5pm
Shannon Community Library

3rd Thursday (every month),
3:30pm - 5pm
Te Awahou Nieuwe Stroom, Foxton
(More information on page 25)

Sunday Concert Series

Last Sunday of every month,
2pm
Te Takeretanga o Kura-hau-pō, Levin
(More information on page 27)

Key – Event locations

 Te Takeretanga o Kura-hau-pō

 Te Awahou Nieuwe Stroom

 Aquatics Horowhenua

 Horowhenua District Council

 The wider Horowhenua community

 Shannon Community Library



ANNE FRANK

NEW ZEALAND

let me be myself

'Let Me Be Myself - Exhibition'

Friday 1 November until Monday 2 March 2020
Te Awahou Nieuwe Stroom | 92 Main Street | Foxton

Open Daily

\$5 Adults | Students Free
\$2 Horowhenua Library card holders

The Diary of Anne Frank captures the real-life story of a young girl, in hiding from the Nazis, in an attic in Amsterdam, during World War II.



Horowhenua

Trig Walkway & Kohitere Forest; Through the seasons on canvas

Paintings by local artist Ronda Turk.

**Te Takeretanga o Kura-hau-pō
(Gallery Space), 10 Bath Street, Levin**



December 2019

Cost: FREE

Contact:

Te Takeretanga o Kura-hau-pō

Renee Faleseuga



(06) 368 1953



reneef@horowhenua.govt.nz



Local Music Showcase

Come along and hear our local talent!



Every Friday afternoon

12pm

Where: Te Takeretanga o
Kura-hau-pō

Cost: FREE



Contact:

Te Takeretanga o Kura-hau-pō



(06) 368 1953



info@horowhenua.govt.nz

SANTA PAWS


— AT THE PARK —



Sunday 1
December,
9am - 12pm

Santa Paws is coming to town!

Bring your pet to Kōwhai Park and get your complete family Santa Paws photo taken.

 Photo's cost \$5 and you will receive a digital copy that will be emailed to you, taken by a professional photographer.

 @HorowhenuaDC

 Horowhenua.govt.nz/events



Kōwhai Park,
Levin



Come along to a relaxed afternoon and support our local jazz talent. Expect to be treated to some Ellington, some Ella, a little bit of Sinatra, a dash of Ray Charles with a side of Miles Davis to woo your ears and soothe your Sunday afternoon.

Cost: FREE



**Second Sunday of every
month**

2pm - 4pm

Where: Te Takeretanga o
Kura-hau-pō

 (06) 368 1953

 tetakere.org.nz



**Horowhenua Culture
& Community Centre**
Te Takeretanga o Kura-hau-pō

Free

Christmas Crafternoon



5 December - TeTakeretanga o Kura-ha-pō
8 December - Te Awahou Nieuwe Stroom
12 December - Shannon Library



2pm

*Come along and make beautiful cards,
tags and decorations to get you ready
for Christmas*



Encounter Levin presents

Christmas in the Park

2019



FREE EVENT

Starring
Ben Lummis



Saturday
7 December
4pm



Levin
Adventure Park





Tea & Tales



10:30am



10 December - Te Awahou Nieuwe Stroom

12 December - Te Takeretanga o Kura-hau-pō

*Join us for a festive morning
tea, treats and an hour of
Christmas Tales*

The Christmas 'Avenue of Trees'

Harvey Bowler Funeral Services invites you to come and walk through this year's Community Christmas experience called the 'Christmas Avenue of Trees.'

This event held at The Salvation Army Worship and Community Centre is a public display of decorated Christmas trees. There is voting and an award for the 'Best Tree'. However the main reason we hold this event is to collect donations for the Levin Inter-Church Food Bank to help those in the community who may be going through hardship this Christmas.

The 'Avenue of Trees' has become a popular event to the Christmas Calendar and has been well supported by the community.

The band will be playing Christmas carols and it is a Christmas event you shouldn't miss!

Kids Quiz for the Children is a must! Follow this with the Horowhenua Festival of Lights Christmas Trail around the Horowhenua, viewing homes and businesses that have lit their places up for Christmas!

We trust that you will take up this opportunity to share in this community event as we celebrate Christmas 2019.



The Salvation Army
11 Durham Street, Levin



**Friday 13 – Sunday
15 December**
6pm - 8:30pm

Cost: donation of non-perishable food to the Levin Inter-Church Food Bank.

Contact:



Harvey Bowler Office

 (06) 368 2954

 harveybowler.co.nz



Join us for a day of festive family fun

Saturday 14 December 2019

Santa's Christmas Parade:

3pm to 4pm - Oxford Street, Levin (State Highway 1)

Christmas Carnival:

4pm to 8pm - Levin Domain

For more information  06 366 0999  hccc@horowhenua.govt.nz

Horowhenua 
DISTRICT COUNCIL

Can we ride it!?

Like it says on the tin... Think up your weird, your wonderful, your out of the box visions, your home built contraption, your zaniest idea of something you think you can ride down our cable lanes and bring it along; if it has a costume and a theme tune involved, even better!

It's hilarious fun for the whole family! A raucous day out!

Bring the crew, some food and refreshments along with your most amazing 'Can We Ride It' idea and get amongst the action! Last year's entries were magnificent. Let's see yours!

Prizes for all the most successful and equally the most dismal failures. Provided it's safe, it's all good with us.

This year we have a film crew from TVNZ 1 Seven Sharp coming along to sample some of the action; so make sure you start planning your 'Can We Ride It' creation now and be a local Hero, just in time for Christmas.

Keep tuned to the Facebook Event Page for all the details.



Saturday 14 December

10am - 8pm

Where: Off The Loop Park,
10 Stewart St, Foxton

Cost: FREE

Contact:

Angela, Dean or Glen

 027 909 7950

 info@offtheloop.nz

 @offtheloopfoxton

BELIEVE IT OR NOT?
QUIZ EVENTS

wednesday

Quiz Night

 Every Wednesday at
Te Takeretanga o Kura-hau-pō

 7pm until 9pm

\$5 ENTRY

Test your skills and win some prizes!

Teams are made of up to 6 people.

 10 Bath Street, Levin
 (06) 368 1953
 www.tetakere.org.nz

Horowhenua
DISTRICT COUNCIL



**Horowhenua Culture
& Community Centre**
Te Takeretanga o Kura-hau-pō



Horowhenua

Summer Sesh!

There is no better way to enjoy
the weekend... than with
a cruisy sunday session!

Enjoy an afternoon in the sun with food, music and good vibes. Grab your family and friends, jump in the car and head to Pop Up Eats Summer Sesh. A great way to ease into your holiday or the working week ahead!

Dec
15
4 - 8pm Sunday
15 December 2019
Tokomaru

Dec
22
4 - 8pm Sunday
22 December 2019
Waitārere Beach

Dec
29
4 - 8pm Sunday
29 December 2019
Foxton Beach

Jan
5
4 - 8pm Sunday
5 January 2020
Waitārere Beach

Jan
12
4 - 8pm Sunday
12 January 2020
Foxton Beach

Jan
19
4 - 8pm Sunday
19 January 2020
Tokomaru

THE GREAT READING

CARNIVAL

TE TAIOPIENGA PĀNUI HIRA

December



Registration Starts



libraries
HOROWHENUA



Toddler Time

Free

Stories, songs, music and rhymes

Bring your toddler along
to a fun, interactive story-time
session where they will also enjoy
music, songs and rhymes

Te Takeretanga o Kura-hau-pō - Mondays 2pm

Te Awahou Nieuwe Stroom - Mondays 2:15pm

Shannon Library - Wednesdays 1:30pm

 (06) 368 1953

 childrens@horowhenua.govt.nz

libraries 
HOROWHENUA

Water Saving Tips

1



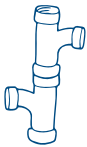
Turn off the tap while brushing your teeth or shaving

5



Do only full loads in the washing machine and dishwasher

2



Check your toilet cistern, taps, and pipes for leaks or overflow

6



Take shorter showers, and while the water is heating up fill a bucket for the garden

3



Use a bucket of water and a mop / sponge for outdoor cleaning jobs

7



Use a bowl or plug in the sink when washing vegetables or doing dishes

4



Sweep up garden waste, rather than hosing it away

8



Use clean waste water from the shower, bath or rinsing dishes to water the garden

The Divine Alchemist

Paintings by local artist Ramila Parbhu.

**Te Takeretanga o Kura-hau-pō
(Gallery Space), 10 Bath Street, Levin**



January 2020

Cost: FREE

Contact:

Te Takeretanga o Kura-hau-pō

Renee Faleseuga



(06) 368 1953



reeneef@horowhenua.govt.nz



Aquatics Horowhenua New Year Swim Challenge!

aquatics
HOROWHENUA

**How many kilometres can you
Swim/Aqua-jog in 8 weeks?**

Start the year as you mean to go on!
Enter today and get 20% off last season's
togs. Winner will get their hands on a
swim pack including; togs, swim passes,
goggles and more!

Cost: FREE



**Monday 6 January - Monday
2 March**

Where: Levin Aquatic Centre

Contact:

Levin Aquatic Centre

Reception



(06) 368 0070



aquatics.horowhenua.govt.nz



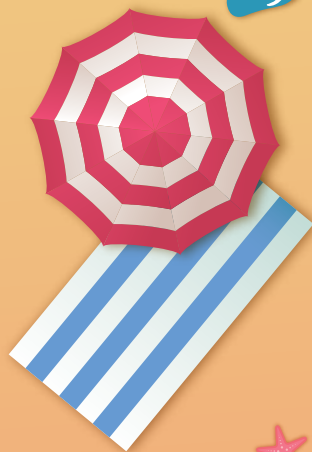
[AquaticsHorowhenua](https://www.facebook.com/AquaticsHorowhenua)

Streamline
SWIM SCHOOL

Stay safe on the beach

Drive safely on the beach

- There is a 30kph speed limit on all Horowhenua beaches.
- Vehicles driven on the beach must be roadworthy and road legal.
- All road rules apply on the beach.
- Be aware of pedestrians, children and animals sharing the beach – drive slowly and carefully.
- Avoid driving over dunes – it causes damage and erosion.
- Avoid racing, donuts, wild swerves and other dangerous driving behaviour.
- Beaches are regularly patrolled by Police and beach wardens. Phone *555 or 105 to report unsafe driving behaviour.



Be sunsmart


- Wear clothing that covers your arms and legs, a hat, and good-quality sunglasses.
- Stay in the shade where possible.
- Use a broad spectrum sunscreen SPF30 or above. Reapply every two hours or after swimming.

Be safe in the water

Swim on beaches patrolled by Surf Lifesavers and stay in the flagged patrol areas. Between 7 December and 15 March, Waitāfere Beach and Foxton Beach are patrolled:

- 11am to 6pm, Monday – Friday (16 December - 24 January)
- 1pm to 5pm, Weekends (7 December - 15 March)





The Reading Challenge

We've put together an Adult Reading Challenge to put some fun into choosing your next book!

Join in with 2020 Reading Challenge and let us guide and inspire you with your book choices.

Spice up your current reading schedule or be inspired to read something different!

There are lots of activities to choose from to help you make the most out of the library this summer!



**Monday 6 January –
Saturday 1 February**

Where: Libraries
Horowhenua

Cost: FREE

Contact:

Pam Coleman

 pamelac@horowhenua.govt.nz

 [tetakere.govt.nz](tel:tetakere.govt.nz)

Catching Edges 2020

The Third Annual Installment of NZ's Best Cable Wakeboard Event.

The best riders at one of NZ's best Wakeboard parks competing for the best prizes and having the best time! (In our humble opinion).

Open Men & Women, Mixed Men & Women, Junior Men & Women, Junior Boys & Girls, Groms and Masters/ Veterans categories.

'Catching Edges 2020'
is a Cable Wakeboard
Competition. Open to all ages
and skill levels.

Riders perform tricks off flat water and obstacles to determine champions in several age/ability divisions.

Great food, amazing people, quality entertainment and amazing prizes, including cash prizes!



**Saturday 25 – Sunday
26 January**
10am

Where: Off The Loop
Park, 10 Stewart St,
Foxton

Cost: FREE

Contact:

Angela, Dean or Glen

 027 909 7950

 info@offtheloop.nz

 [@offtheloopfoxton](https://www.facebook.com/offtheloopfoxton)

The background of the poster is a vibrant illustration of a LEGO castle. The castle is built from grey and black bricks, featuring a grey arched doorway and a shield-shaped window with a circular pattern. A yellow LEGO minifigure with a smiling face and a red torso is perched on the castle's battlements. To the right of the minifigure is a grey cylindrical structure with a red flame-like top. The sky is a clear, bright blue, and the ground is a mix of green grass and brown dirt. In the foreground, there are several large, colorful LEGO bricks (red, yellow, green) scattered on the ground.

LEGO

FUN HOUR

COME BUILD WITH US!



**Te Takeretanga
o Kura-hau-pō**

1st Thursday of every month
3:30pm – 5:00pm



Shannon Community Library

2nd Thursday of every month
3:30pm – 5:00pm



Te Awahou Nieuwe Stroom

3rd Thursday of every month
3:30pm – 5:00pm

FREE ENTRY

All welcome

@ childrens@horowhenua.govt.nz

 [tetakere.org.nz](https://twitter.com/tetakere.org.nz)

libraries 
HOROWHENUA

Summer 2019/20 | 25

NZ SUP Polo National Champs

In its second Year! The NZ SUP POLO National Championships will again be held at the Mecca Of SUP POLO in NZ: OFF the LOOP, Foxton Cable Wakeboard Park.

In the dedicated area, pit your team against defending Champions; Men's Champs 'Wake n Bake', Women's Champs 'Board Housewives' and Youth Champs 'Blondies'.

Teams of 3 with 1 reserve, battle it out in a 25m x 30m inflatable arena. Make sure you don't miss out.



Plenty of time to get your team together and start practicing.

- Youth Division 15yrs and under
- Open Mens
- Open Womens

Keep tuned to the Facebook Event Page for all the details



Sunday 26 January

10am - 6:30pm

Where: Off The Loop Park,
10 Stewart St, Foxton

Cost: FREE

Contact:

Angela, Dean or Glen



027 909 7950



info@offtheloop.nz



@offtheloopfoxton

Tai Chi classes

Come along and embrace the mind, body and spirit in these weekly Tai Chi sessions.

**Main Space,
Te Takeretanga o Kura-hau-pō,
10 Bath Street, Levin**



Every Monday
10am



Cost: \$6

Contact:

Te Takeretanga o Kura-hau-pō

(06) 368 1953

info@horowhenua.govt.nz

Sunday Concert Series

Come and enjoy some of Horowhenua's talented musicians playing live.

**Te Takeretanga o Kura-hau-pō,
Bath Street, Levin.**



**Last Sunday of every
month**
2pm



Cost: FREE

Contact:

If you are interested in playing please enquire at the service desk.

(06) 368 1953

info@horowhenua.govt.nz

Bird Song

An exhibition of paintings by local artist Iris Reesby.

**Te Takeretanga o Kura-hau-pō
(Gallery Space), 10 Bath Street, Levin**



February 2020



Cost: FREE

Contact:

Te Takeretanga o Kura-hau-pō

Renee Faleseuga

(06) 368 1953

reneef@horowhenua.govt.nz

Fire restrictions

Fire and Emergency New Zealand (FENZ) issues fire permits and fire restrictions. For information about fire restrictions, and to apply for a fire permit:

checkitsalright.nz

0800 656 628



Supercheap Auto's Spectacular Car Show

This huge annual Shannon event has now outgrown the Domain and moved up the road to the Shannon Golf Club (aka Buckley Golf Club) so there is more room for vehicles, stalls and people.

Last year there were over 500 vehicles on site. Bring your own special vehicle or just come along and enjoy the Show.

This is a community fundraiser so local schools and other clubs will be on site too.


Public car parking is available for \$2 per car (funds go to the Golf Club). Usual entry to the Show is \$2 per person (funds go to the Shannon Progressive Association).

Cost: \$2 per person (at the gate)

Contact:

Janette Campbell

If you would like to book a stall site or need further information.

 (027) 253 3955

 owlcatraz@xtra.co.nz



Sunday 16 February

From 9am

Where: Shannon Golf Club
(aka Buckley Golf Club),
Engles Road Shannon








 horowhenua/events.govt.nz

 HorowhenuaDC

 06 366 0999

Horowhenua

