



Te Mahere ā-Hapori o Waitārere

Waitārere Beach Community Plan

DRAFT
January 2020



Te Aronga o tēnei Mahere

Purpose of this plan

The purpose of the Waitārere Beach Community Plan is to outline the aspirations of people who have a connection to Waitārere Beach - because they live there, own a holiday home, or visit often.

The Waitārere Beach Community Plan:

- Has been developed in conjunction with local iwi based on feedback and ideas from people with a connection to Waitārere Beach.
- Outlines the vision of the Waitārere Beach community.
- Identifies four priority areas and associated actions.
- Supports community-led projects.

The Community Plan is designed to encourage community-led development, enhance collaboration between different groups and identify the community's priorities to inform Council's decision-making processes. The projects identified are reflective of the community's aspirations and do not necessarily have Council funding.



Te Hapori o Waitārere

The Waitārere Beach Community

Waitārere Beach is a small coastal settlement located 10 minutes from Levin. As at 2018, Waitārere Beach has a population of approximately 650 permanent residents, with the population increasing significantly over the summer holiday period.

The Waitārere Beach community has a well-stocked Four Square Store, takeaways, two camp grounds, a café and restaurant. There are also a number of active community groups such as:

- Club Waitārere
- Levin Waitārere Surf Life Saving Club
- Waitārere Scout Group
- Waitārere Beach Family Fishing Club
- Waitārere Beach Wardens
- Waitārere Beach Progressive and Ratepayers Association



Waitārere Beach



Te Hītori History

Waitārere Beach was established in 1936 as a result of local development in farming and forestry, and has since become a small beach community. Waitārere Forests, which bound the community to the north and south, were established in 1936 with the aim of protecting inland farmland as well as providing an employment drive during the Depression.

Waitārere is a small watercourse flowing from Te Konganui Lagoon to the Waimakaira Swamp at Poroutawhao. This watercourse is unusual because it flows from west to east, due to the underlying geology of sandstone.

In 1853/54 a Flour Mill was built by local iwi. To secure water needed to power the mill, an artificial channel was cut from Te Konganui Lagoon to achieve a fall of water onto the mill-wheel. This led to the stream becoming known to locals as Waitārere 'copious flowing water'.

The beach is named 'Okatia Beach' after the mythological spirit of Okatia who lived inland but had a strong desire to reach the sea. Okatia did not let anything stop him from reaching his desire, thus carving through the land on his journey, leaving behind the formations of Te Āpiti (Manawatū Gorge) and the Manawatū River. These formations remain as reminders of the power of Okatia, and his relentless desire to reach the sea where he was never seen again.



The dune system at Waitārere Beach is geologically diverse, with three main dune systems. The oldest dunes are approximately 4,000 – 2,000 years Before Present (BP) and are located landward of the Waitārere Beach Settlement. Located to the north of Waitārere Beach Road is an area of dunes formed approximately 500 years BP. The newest dunes cover the settlement and started to form in the late 1800's.

A significant dune system in the area is the Otororoa Ridge which runs between the Hōkio Stream and Wairarawa Stream.

The dunes continue to move today, particularly noticeable is the seaward movement of the dunes (accretion), which adds over 1 metre per year to the coastline.

For many years a landmark at Waitārere Beach was the wreck of the Hydrabad ship which deliberately drove into Waitārere Beach in June 1878 after encountering a severe storm. All crew members survived. Now however, the ship has been inundated with sand and can no longer be seen on the beach today.

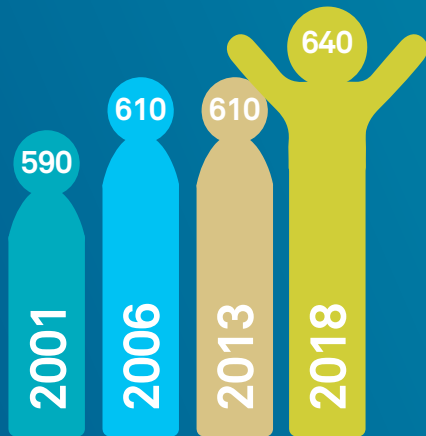
A stone cairn with a commemorative plaque can be viewed at the entrance to the Waitārere Levin Surf Life Saving Club car park. Holmwood Park was named in commemoration of the Captain of the ship, Captain Charles Holmwood.



Ngā Kōrero mō te Hapori Community Profile

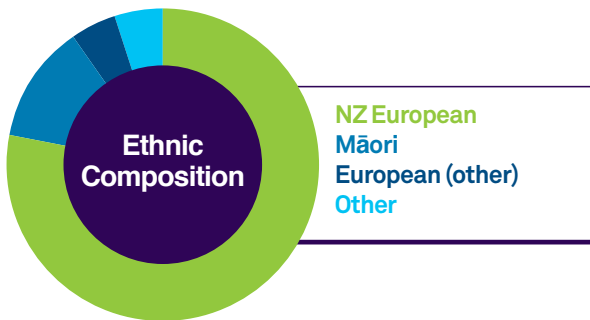


The 2018 Census information is anticipated to be released for Waitāreere in 2020. The majority of this data is based on the 2013 Census which is currently the latest information available.



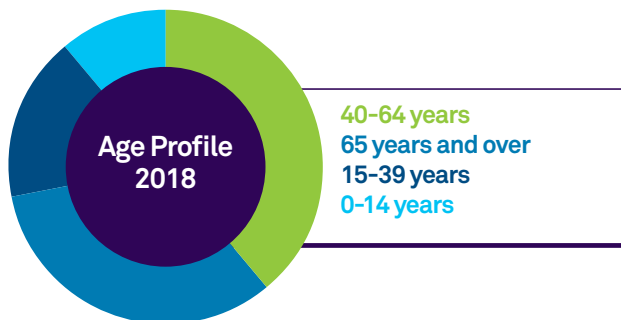
Population Estimates

Since 2001, the resident population of Waitāreere Beach has been steadily increasing (from 590 residents in 2001 to 640 in 2018). This is an increase of 50 residents.



- 82% of the population classifies themselves as NZ European, and 13% as Māori. This compares to the Horowhenua at 82.4% NZ European and 22.8% Māori.

Note: Some people can identify as more than one ethnic group.



- The population at Waitāreere Beach has been ageing over time. The majority of the population are in the age ranges of 40 years and over (72%).

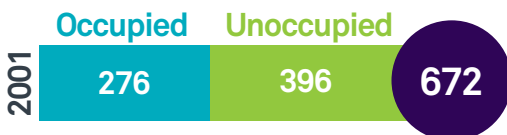
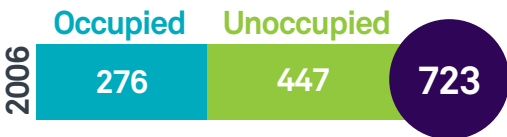
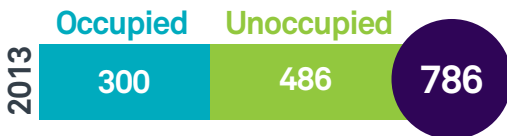




- 42% of the population is currently not in the labour force (this includes retired people and children). 35% of the population is employed full-time.



Occupied & Unoccupied Dwellings



- The number of dwellings at Waitāreere Beach increased between 2001 and 2013, from 672 dwellings to 786 dwellings (an extra 114 dwellings).
- The number of unoccupied dwellings (likely to be holiday homes) was sitting at 62% in 2013.



Ngā Takahanga i puta ai te Mahere

Development of the Plan

The Waitārere Beach Community Plan was developed based on engagement with the community. This involved an engagement with the students from Poroutawahao School, a community

drop-in session, surveys, and hui with local iwi. Over 120 students had their say and over 300 community members participated in the process.



- | | | |
|--|--|---|
| <p>1 Surf club and car park </p> <p>2 Fire station </p> <p>3 Waitārere Domain
<i>(Playground, tennis courts, basketball court, free BBQ, and Scout Hall)</i> </p> <p>4 Local businesses
<i>(Four Square, @ the beach cafe, Gifts at Waitārere)</i></p> <p>5 Playgroup, community rooms and community garden</p> <p>6 Club Waitārere
<i>(Bowling club)</i> </p> | <p>7 Holmwood Park</p> <p>8 Windsor St. beach entrance</p> <p>9 Waitārere Beach Rd. beach entrance</p> <p>10 Forest Rd. South Forest entrance</p> <p>11 Rua Ave South Forest entrance</p> <p>12 Waitārere Beach Rd. North Forest entrance</p> <p>13 Pipi Point Restaurant and Bar</p> | <p>14 Liquor Centre bottle store</p> <p>15 Britaz Fish and Chips</p> <p>16 Mairiri Place carpark and beach walkway entrance</p> <p>17 Waitārere Beach Motor Camp</p> <p>18 Hyderabad Holiday Park</p> <p>19 Hudson Reserve</p> <p>20 Hyderabad Shipwreck</p> |
|--|--|---|

Te Matawhānui Our Vision

Waitārere Beach is a safe, friendly settlement that has a relaxed beach character and lifestyle with a diverse population who know each other.

Ngā Uara Our Values

Kaitiakitanga

We are actively showing guardianship, care and protection for the Waitārere Beach environment.

Whakawhanaungatanga

We are connected and able to form relationships with each other to enhance a sense of belonging to the Waitārere Beach community.

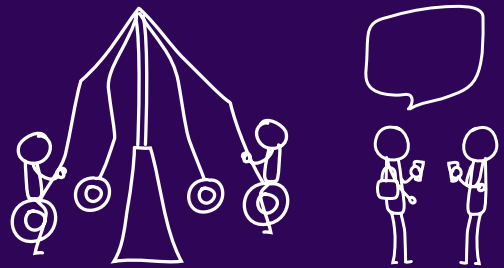
Manaakitanga

We care for, support and value each other in order to foster a sense of community at Waitārere Beach.

Ngā Take Matua - Our Priorities

Te aro ki te āhua ake me te wairua whakawhanaunga o roto i te hapori o Waitārere.

Recognise the character and the sense of community that makes Waitārere Beach special.



Thriving
communities



An exuberant
economy



Vibrant
cultures



Stunning
environment

The community identified that the number one challenge Waitārere Beach faces is growth. The Horowhenua Growth Strategy 2018 identified that by 2040, Waitārere Beach will need an additional 300 dwellings to accommodate projected growth.

Many residents are concerned that this growth will adversely affect the character and lifestyle of the settlement which the community values and wants to protect.

Waitārere Beach is a settlement that has a strong sense of community which is valued by many of the residents. This is shown by the number of residents who volunteer. It is important that the same friendly and connected community that currently exists is recognised and retained as the settlement grows.

Key aspects identified by the community that contribute to the character and sense of community at Waitārere Beach include:

- The residents are friendly and know each other.

- The community still has 'old school' baches and large section sizes.
- The beach.
- The atmosphere has a 'village' and relaxed feel.
- The whole environment including the beach, dunes and waterways and the history of these features.

There is also strong community support for the Levin Waitārere Surf Life Saving Club as a key community organisation.





Actions



Support Local Businesses, Community Groups and Community Initiatives

What

- The Waitārere Beach community will continue to support local businesses, community organisations and community initiatives.
- Council will work with community groups to help assist them maximise funding from Council grants and external grants.

Who

- Waitārere Beach Community.
- Horowhenua District Council.
- Waitārere Beach Progressive and Ratepayers Association.
- Local Iwi.

When

- Ongoing.

Success indicators

- Local community groups have stable membership.
- Relevant community groups from Waitārere Beach are aware of grants available (both Council and external) and apply as needed.

Funding

- Council has funding identified in the first 3 years of the Long Term Plan 2018-38 to support Surf Life Saving, Waitārere Beach Wardens and Neighbourhood Support, as well as for Council grants.



Support Local Events

What

- Support the community to deliver local events. This could include supporting community-led events for ANAZC Day & Waitangi Day.

Who

- Horowhenua District Council.
- Waitārere Beach Progressive and Ratepayer Association.
- Local Iwi.

When

- Ongoing.

Success indicators

- At least one community event is held each year.
- Events are well-attended.

Funding

- Staff support will be provided by Horowhenua District Council to support community-led events.



Share Information about Local Groups and Services

What

- Create a brochure which provides information on local services and groups.

Who

- Waitārere Beach Progressive and Ratepayers Association.
- Horowhenua District Council.
- Local Iwi.

When

- July 2020.

Success indicators

- A Waitārere Beach brochure has been created and printed.

Funding

- Staff support will be provided by Horowhenua District Council for the development of the brochure.
- Funding from grants will be sought for external costs (e.g. printing).



New Surf Life Saving Club Building

What

- A new building for the Levin Waitārere Beach Surf Life Saving Club building is constructed.

Who

- Levin Waitārere Surf Life Saving Club.
- Horowhenua District Council.
- Local Iwi.

When

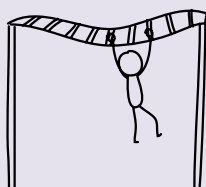
- To be confirmed.

Success indicators

- The Levin Waitārere Surf Life Saving Club building is fit-for-purpose.

Funding

- It is anticipated funding for this project will come from a range of sources, such as external grants and fundraising by the Levin Waitārere Surf Life Saving Club.





Investigate Options for a Community Hub

What

- Investigate the need for, and options for establishing a not-for-profit community hub which is multi-use and inclusive. For example: meetings, exercise, local services, pōwhiri and functions.

Who

- Waitārere Beach Progressive and Ratepayers Association.
- Horowhenua District Council.
- Local Iwi.

When

- July 2025.

Success indicators

- The need for and feasibility of establishing a community hub which can be used for a range of local purposes is known.

Funding

- No Council funding has been allocated for this project at this time.



Proactive Planning for Growth

What

- Develop a Master Plan for the growth areas at Waitārere Beach. The Master Plan will take a proactive approach to ensure new development connects with, and complements the character of the existing settlement, acknowledges environmental opportunities and considers whether there is enough commercial zoned land to cope with projected growth.
- Make changes to the Horowhenua District Plan to enable future development in the settlement's growth areas which is consistent with the Master Plan.

Who

- Horowhenua District Council.
- Local Iwi.

When

- March 2020: Master Plan Complete.
- July 2021: District Plan Change Complete.

Success indicators

- The Master Plan is supported by the community.
- Master Plan explicitly considers the impact on the character environment and history of Waitārere Beach and seeks to complement it.
- Plan Change is completed.
- Development is consistent with the Master Plan and is effectively integrated with the existing settlement.

Funding

- Council funding has been allocated in the Annual Plan 2019/2020 for both the Master Plan and Plan Change.

Te takutai, ngā tāhuahua me ngā arawai.

The beach, dunes and waterways.



Thriving
communities



Stunning
environment



Enabling
Infrastructure



Partnership
with Tangata Whenua

The Waitāreke Beach community value the natural environment, including the beach, dunes and waterways and are interested in being involved in environmental projects to restore and/or enhance the mauri of these areas.

It is essential that the ability for Maōri to undertake traditional cultural activities associated with the beach is protected.

The community has identified they can contribute by respecting the environment, picking up rubbish, keeping to dedicated paths, getting involved in community projects and encouraging others to do the same.

However, in order to be successful kaitiaki (guardians) of the environment, more detailed knowledge of the local ecosystem is required.



Actions



Increase Understanding of the Waitāreke Beach Ecosystem

What

Undertake research to understand the local ecosystem, both in the past and in the present, including (but not limited to):

- Streams.
- Dune lakes.
- Dunes.
- Foreshore.
- Shellfish.
- Vegetation.
- Biodiversity.

Who

- Horizons Regional Council.

- Horowhenua District Council.
- Local Iwi.

When

- December 2022.

Success indicators

- There is a common understanding of the local ecosystem, both now and in the past.
- The community are actively educated about the ecosystem.

Funding

- No Council funding has been allocated for this project at this time.



Dune Planting, Awareness & Preservation

What

- Work collaboratively to establish plantings on the dunes which are suitable for the local context (e.g. native plants).
- Increase community awareness and education of the effects of damaging the dunes, vegetation and toheroa.

Who

- Horizons Regional Council.
- Horowhenua District Council.
- Local Iwi.
- Waitārere Beach Progressive and Ratepayers Association.
- Waitārere Beach community.

When

- Ongoing.

Success indicators

- Cross agency collaboration occurs.
- The Waitārere Beach community are involved in planting days.
- The Waitārere Beach community have a greater understanding of the impact of damaging the dunes, vegetation and Toheroa.

Funding

- No Council funding has been allocated for this project at this time.



Keep the Beach Clean

What

- Ongoing beach clean-up events.

Who

- Waitārere Beach Progressive and Ratepayers Association.
- Local Iwi.

When

- Ongoing: Monthly.

Success indicators

- Regular attendance at beach clean-up events by the community.

Funding

- This is a voluntary initiative run by the Waitārere Beach Progressive and Ratepayers Association.
- Horowhenua District Council provide support through the provision of minor equipment and free rubbish disposal.



Co-Management of the Foreshore

What

- Identify opportunities for the co-management of the foreshore and other open spaces with local Iwi.

Who

- Horowhenua District Council.
- Local Iwi.

When

- Ongoing.

Success indicators

- Opportunities for the co-management of the foreshore and other open spaces are explored.

Funding

- No Council funding has been allocated for this project at this time.



Artwork by student from Poroutawhao School.

Ngā rēhia tū-ā-nuku. Outdoor Recreation.



The community strongly values the outdoor recreation opportunities currently available at Waitārere Beach. The community's top three favourite activities to do at Waitārere Beach are walking, swimming and biking. There is community support for increasing opportunities for walking/biking in the area.

Currently residents use the beach, settlement and adjoining forests for walking and cycling. The forests to the north and south of the settlement are owned by the Crown and have a forestry licence over them. Therefore, use of the area is informal at the discretion of the Crown and forestry licence owners. Further access to or development of the forestry

areas is not currently within the scope of the Waitārere Beach Community Plan.

In addition to the beach, the community has access to two parks for outdoor recreation – Waitārere Domain and Holmwood Park. Waitārere Domain is the most used park, with strong community support for ongoing improvements.

The community is also passionate about vehicle access to the beach, however a number of community members expressed a desire for increased safety for beach users particularly near the Levin Waitārere Surf Life Saving Club during busy times.

Actions



Waitārere Domain Improvements

What

- A Development Plan for Waitārere Domain is created and implemented.
- The Development Plan incorporates cultural components designed alongside local Iwi.

Who

- Horowhenua District Council.

- Waitārere Beach Progressive and Ratepayers Association.
- Local Iwi.

When

- March 2020: Waitārere Domain Development Plan completed.
- Ongoing: Implementation of improvements in accordance with the Waitārere Domain Development Plan.

Success indicators

- Ongoing improvements consistent with the Waitārere Domain Development Plan are completed at Waitārere Domain.
- Additional funding could be applied for from external grants to support the implementation of projects identified in the Waitārere Domain Development Plan.

Funding

- Council funding has been identified in years 1 – 8 of the Long Term Plan 2018-2038.

Shared Pathways

What

- Ensure the Shared Pathways Concept Plan includes pathways for the Waitārere Beach area.
- The top priority is a shared pathway which runs alongside the road from State Highway 1 to the settlement.

Who

- Horowhenua District Council.
- Waitārere Beach Progressive and Ratepayers Association.
- Local Iwi.
- NZTA

When

- Early 2020: Shared Pathways Concept Plan complete.

- Long Term: Construction of shared pathways for the Waitārere Beach area.

Success indicators

- Adopted Shared Pathways Concept Plan identifies a shared pathway following the road from State Highway 1 to the settlement.
- Shared paths are constructed in accordance with the Shared Pathways Concept Plan.

Funding

- Council funding is allocated for the development of the Shared Pathways Concept Plan.
- No Council funding has been allocated at this time for the construction of shared pathways in the Waitārere Beach area.

Vehicles on the Beach

What

- Investigate and implement options for increasing safety for beach users between the two beach entrances (Waitārere Beach Road and Windsor Street).

Who

- Horowhenua District Council.
- New Zealand Police.

- Levin Waitārere Surf Life Saving Club.
- Waitārere Beach Wardens.
- Waitārere Beach Family Fishing Club.
- Waitārere Beach Progressive and Ratepayer Association.
- Local Iwi.

When

- Summer 2019/2020.

Success indicators

- A collaborative solution for addressing safety issues resulting from the use of vehicles on the beach in the area in front of the Surf Life Saving Club is developed and implemented.

Funding

- Staff support will be provided by Horowhenua District Council to facilitate the investigation.



Future Parks and Reserves

What

- Ensure public outdoor recreation opportunities are planned as part of the development of the Master Plan for the residential growth areas at Waitāreke Beach.
- Enable cultural components to be designed alongside local Iwi.

Who

- Horowhenua District Council.
- Local Iwi.

When

- March 2020: Master Plan Complete.

Success indicators

- The Master Plan identifies opportunities for the development and redevelopment of green spaces which provide a strategic network of outdoor recreation opportunities at Waitāreke Beach.

Funding

- Council funding has been allocated in the 2019/2020 Annual Plan for the development of the Master Plan.



Artwork by student from Poroutawhao School.

Ngā pūnahanga e tutuki ai ngā hiahia o te hapori.

Infrastructure that meets community needs.



The Waitārere Beach settlement is currently provided with a reticulated wastewater network, however, drinking water supply is currently from roof water or water bores.

The community has identified that ongoing maintenance of infrastructure is important.

Mixed interest has been shown by some residents for a reticulated water supply, with

residents both supportive and opposed to a reticulated system.

Additional seating near the Surf Life Saving Club was identified as an area for improvement, as well as, investigating additional street lighting along Park Avenue to the south of Club Waitārere.

Actions

Reticulated Drinking Water

What

- Complete a feasibility study for a Council provided reticulated drinking water supply.

Who

- Horowhenua District Council.
- Local Iwi.

When

- July 2020.

Success indicators

- A decision has been made about whether to proceed to the next stage of the project (which would include community consultation).

Funding

- Council funding is allocated in the 2019/2020 Annual Plan for the completion of the feasibility study.



Seating Around Town

What

- Investigate the need for additional seating around the Waitārere Beach settlement.

Who

- Horowhenua District Council.
- Waitārere Beach Progressive and Ratepayers Association.
- Local Iwi.

When

- July 2021.

Success indicators

- Additional seating has been constructed.

Funding

- No Council funding has been allocated for this project at this time.



Street Lights

What

- Investigate the need for more street lighting throughout Waitārere Beach.

Who

- Horowhenua District Council.
- Waitārere Beach Progressive and Ratepayers Association.
- Local Iwi.

When

- July 2021.

Success indicators

- Safety issues resulting from a lack of street lighting are known, with a plan in place to address.

Funding

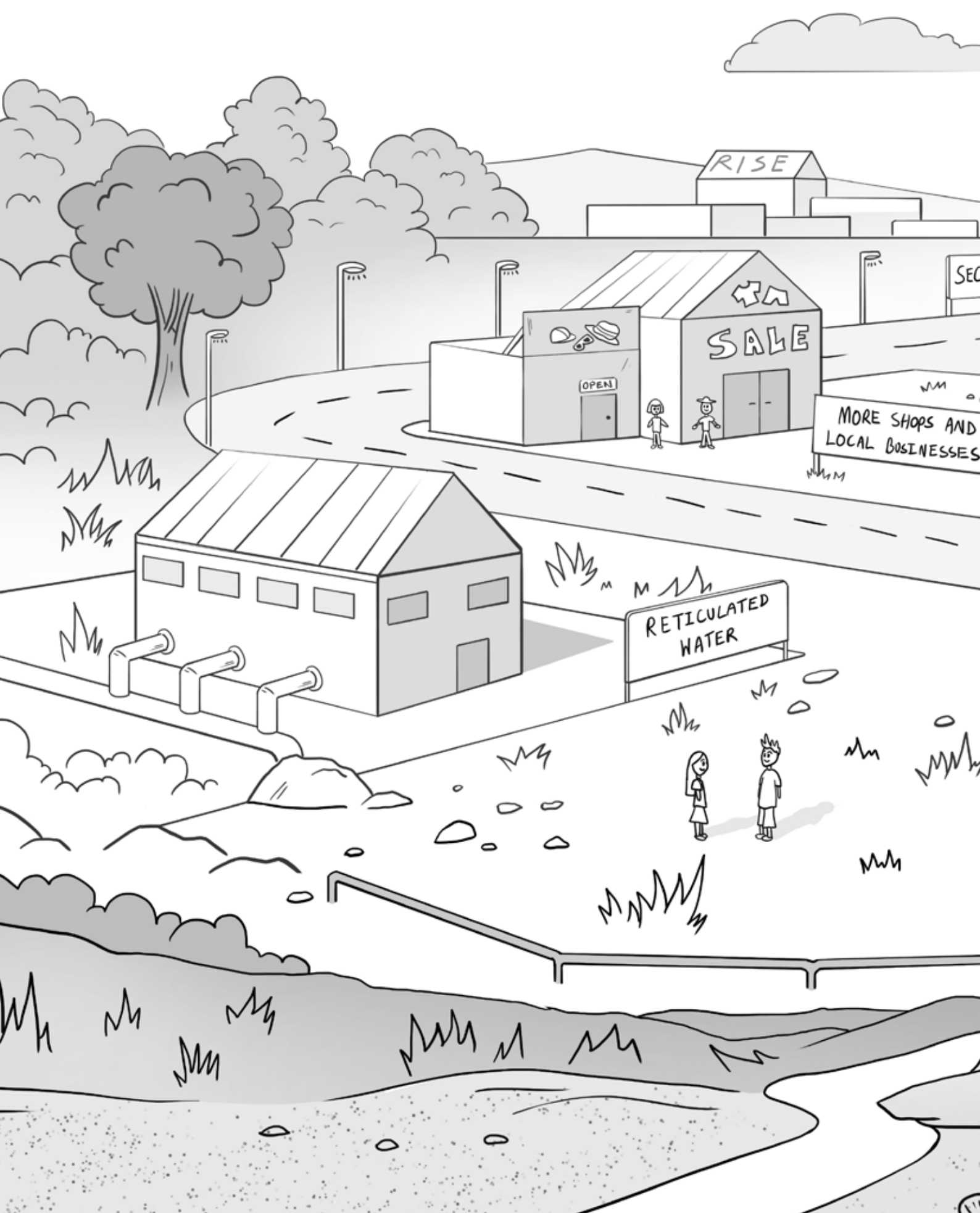
- No Council funding has been allocated for this project at this time.

Ngā takahanga o muri ake nei

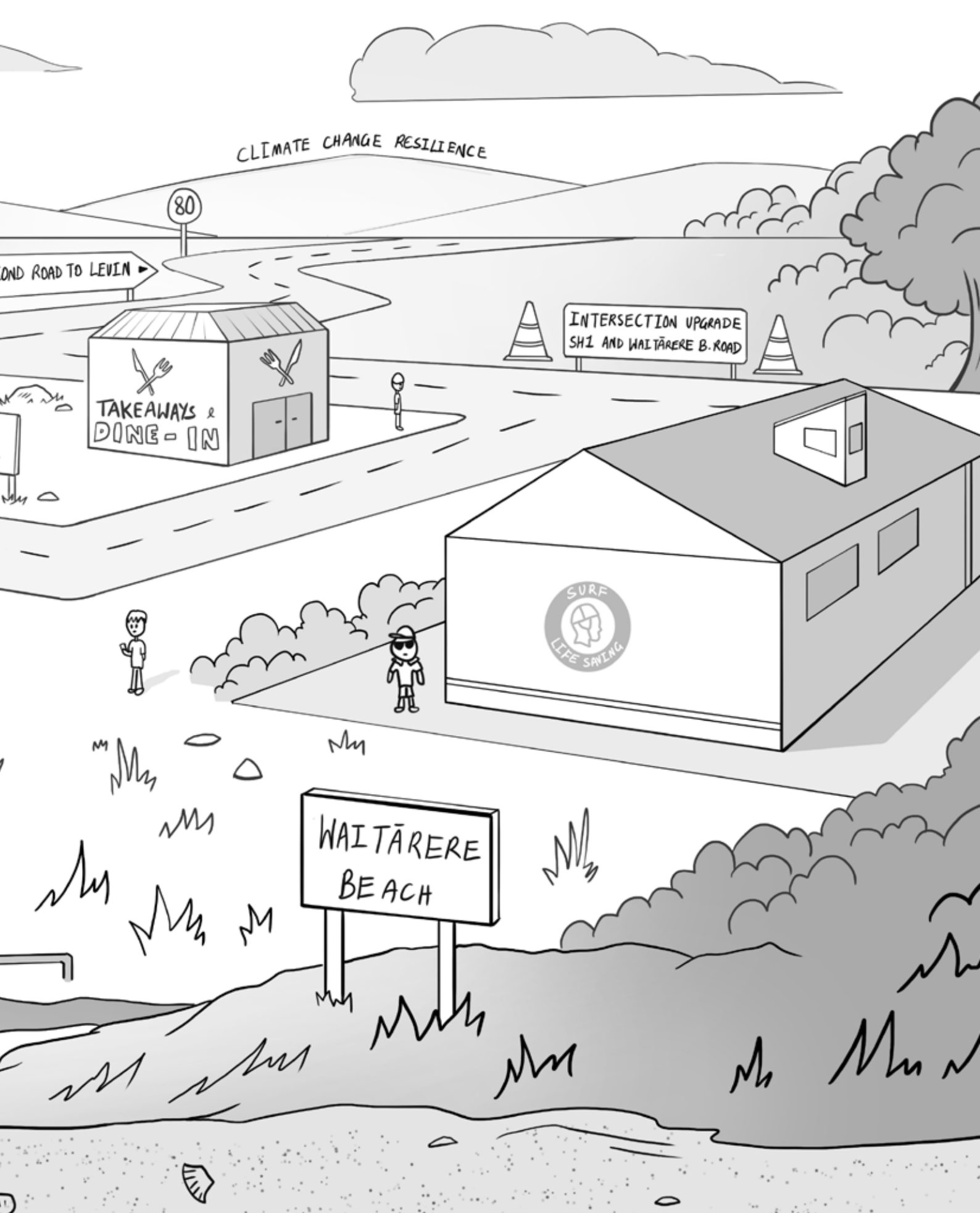
Next Steps

Monitoring of progress against the actions identified in the Waitārere Beach Community Plan will be undertaken yearly.

A review of the Waitārere Beach Community Plan will be undertaken during 2024 or earlier if required.



Waitāreere Beach has continued to change over the years. In looking back some of these changes now look really significant others have been more gradual, while some things have remained the same.



The conceptual image is designed to prompt some ideas and discussion about what Waitāreere might look like in the next 20 years. What are some of those things that might change? Could be needed? or nice to have as Waitāreere Beach evolves in the future.

Te whai wāhitanga mai o te hapori Community Engagement

Thank you to all those who have contributed to the development of this plan.

Poroutawhao School Engagement

The students from Poroutawhao School participated in an engagement session on 23 May 2019. The students from the school prepared stories prior to the session which identified what they like about Waitārere Beach and what could make it better. During the session the students shared their stories and ideas which were put on post it notes on aerial maps. An exercise specific to the Waitārere Domain was also undertaken on the same day which will link into the Waitārere Domain Development Plan. Feedback from home was also received about what makes Waitārere Beach special.

Community drop-in session

A community drop-in session was held on 20 July 2019 at the Waitārere Scout Hall located at Waitārere Domain. Members of the community were able to drop by to have a look at the ideas from the students at Poroutawhao School, read information about their local community and Council services and projects, complete a survey, give their thoughts on key questions posed and talk to staff. Over 65 adults attended the session.

Survey 1

People with a connection to Waitārere Beach were invited to complete an online survey between 1 July 2019 and 5 August 2019. The survey included seven questions for the development of the Waitārere Beach Community Plan.

A total of 258 survey responses were received. These responses were analysed alongside the responses from the Community drop-in session, and resulted in draft priority areas being developed.

Survey 2

A second survey was open from 23 August 2019 to 9 September 2019 and asked questions focused on the draft priority areas which were developed from the first survey. A total of 163 responses were received.

Engagement with Iwi

The draft Waitārere Beach Community Plan was also developed alongside local iwi.

Draft Waitārere Beach Community Plan

A draft Waitārere Beach Community Plan was created and open for community feedback between 18 January 2020 and 4 February 2020.



Artwork by student from Poroutawhao School.

Horowhenua District Vision and Community Outcomes



He rau ringa e pakari ai ngā taura whiri i ō tātou kāinga
noho me ō tātou hāpori – mai i te pae maunga o
Tararua ki te moana.

With many hands the threads which weave our
neighbourhoods and communities together will be
strengthened from the Tararua Ranges to the sea.



Have Your Say

Now is your chance to let us know if the Draft Waitārere Beach Community Plan captures what is most important to the community.

Feedback open 18 January - 14 February



Engagement event

Saturday 18 January 2020
Waitārere Domain, 11am - 3pm. Free BBQ

For more information:

 horowhenua.govt.nz

Katrina Gray
Strategic Planner

 06 366 0999  communityplans@horowhenua.govt.nz

Horowhenua 
DISTRICT COUNCIL

 enquiries@horowhenua.govt.nz

 www.horowhenua.govt.nz

 HorowhenuaDC

 06 366 0999

 Private Bag 4002, Levin 5540

 126 Oxford St, Levin 5510