

Community Connection

Issue 170 August 2022



Monique Davidson

Message from the Chief Executive

Kia ora koutou

I'd like to acknowledge those that have been impacted by the persistent heavy rain and high groundwater levels over the past weeks. Please know that the stormwater issues across the district are top of mind, and we have a team working to investigate and where possible resolve these issues. You'll notice we've included some graphs that help to show the extreme weather that's challenging us, later in the publication.

With September just around the corner, we're hoping for more settled weather. We're also turning our attention to Local Elections.

It's time to start thinking about Horowhenua's future and make your vote count. Twenty-eight people have put their hands up to shape our

district's future. I encourage you to do your own research, get to know your candidates, call them, chat, and learn more about them and their aspirations. Head to one of the 'meet the candidate sessions' organised by community organisations. Make sure you and what you stand for are represented around the Council table. If you're an enrolled voter, you'll receive your voting information pack in the mail from mid-September. Voting starts on Friday, 16 September and will close at 12 noon on Saturday, 8 October.

Next month we'll be celebrating international Welcoming Week from 9-18 September, with our first group of former refugees (two families) arriving in October and being supported by New Zealand Red Cross. For immigrants or refugees, arriving in a new country, adapting to a new culture and often a new language can be challenging.

It felt a natural fit that Horowhenua should join the Welcoming Communities programme, given the warmth and sense of community already so prevalent here. The Welcoming Communities programme is aimed at welcoming people to the

district and improving engagement with our local community.

You will hear more about the Welcoming Communities programme in the coming months, including the significant investment being made by central government in local community housing, the rich cultural, social and economic benefits that newcomers contribute to their communities and the wrap around services that New Zealand Red Cross and other agencies provide to ensure they are well cared for.

If you haven't followed us already, keep up-to-date with the latest Council news and events on our Facebook and Instagram accounts @HorowhenuaDC. That's all for now.

Take care, stay safe and look out for each other.

Ngā mihi

Monique Davidson

Rates rebates

It's never been easier to apply for a rates rebate, and applications are open now. Around 2,000 ratepayers in Horowhenua are likely to be eligible for a rates rebate of up to \$700. Applications can be made online without the need to leave the house.

Rebates are calculated based on your income, the number of dependants living with you and the total amount of rates for 2022/23.

The Rates Rebate Scheme provides a rebate of up to \$700 for people whose annual income is \$28,080 or less and who are paying rates for the home they were living in on 1 July 2022. The income threshold increases by \$500 for each dependant in your household. For example, if your rates are \$3,000 in total for Horowhenua District Council and Horizons Regional Council combined, and your income is closer to \$40,000, you could be eligible for approximately \$400.

Proof of income is needed to complete your application. If your only source of income comes from Work and Income we can save you a trip to the Ministry of Social Development (MSD) if you complete the Rates Rebate MSD Income Release Waiver form. This is available from the Council office and is also available on our website at horowhenua.govt.nz/RatesRebates. Proof of income from IRD is

Are you eligible for a Rates Rebate?

Apply Now

Rebates of up to **\$700** may be available to eligible residents.



required if you receive other sources of income (eg interest, rentals) on top of your benefit. Proof of your spouse/partner's or joint income is required if you're living together.

If you think you might struggle to meet your next rates payment, even if you're not eligible for a rates rebate, our team are here to support you. We know things are tough at the moment with rising

living costs. There are several ways we can help you manage your rates payments, such as spreading your payments into affordable amounts to be paid during the year by direct debit so you avoid any penalties. Email us on enquiries@horowhenua.govt.nz or call 06 366 0999 to discuss a payment plan that works for you.

horowhenua.govt.nz/RatesRebates

Ōtaki to North of Levin (Ō2NL) Expressway Project Update



“Safer roads equals less lives lost. It is that simple,” says Horowhenua District Council Chief Executive Monique Davidson. “Yes, the expressway will deliver numerous benefits for both our community and the nation, but ultimately saving lives is what it all boils down to,” continues Davidson.

With 72 deaths and serious injuries on State Highways within the Horowhenua District in the five years to 2021, it is no wonder that safety is top of mind for the Horowhenua community.

In June Council sent the Prime Minister a letter of endorsement for the Ōtaki to North of Levin Taitoko (Ō2NL) Detailed Business Case, which goes before the joint ministers for final approval next month.

Mayor Bernie, Chief Executive Monique Davidson and local MP Terisa Ngobi met with Minister Woods on 11 August to advocate for the project and its importance to our community.

The Ō2NL project is the most significant Government investment in the Horowhenua District in generations. Alongside improving safety, the obvious economic growth and ensuring Wellington and the rest of the North Island have a resilient connection are also key outcomes.

“With a district that is growing three times faster than the rest of New Zealand and a country still

very much reliant on our roads for freighting goods (92.8% of freight was via road in 2017/18*), investing in roading infrastructure to address the serious road transport deficit seems an obvious and much needed choice.

For Horowhenua residents whose homes and in some cases livelihoods have been left hanging in the balance, next month’s decision will provide relief and the ability to look to the future with greater certainty.

The expressway was on and off the table for over a decade, creating much anxiety. However, in 2018 a preferred corridor for the new 24.2 km Ōtaki to North of Levin Expressway was publicly announced.

In 2020, central government committed funding to construct the four-lane highway. The project includes a separated shared path for walking and cycling. Construction is set to start in 2025 and be completed in 2029.

* Ministry of Transport’s 2020 Green Freight Strategic Working Paper

Welcoming Communities

The 'Mementos' photography exhibition tells refugees' stories and experiences about leaving their homelands and moving to Aotearoa through photography.

Come and see the immense changes they've endured and the hopeful new lives they're building in New Zealand.

24 August – 24 September 2022

Te Takeretanga o Kura-hau-pō, 10 Bath Street, Levin

Photography by Ehsan Hazaveh

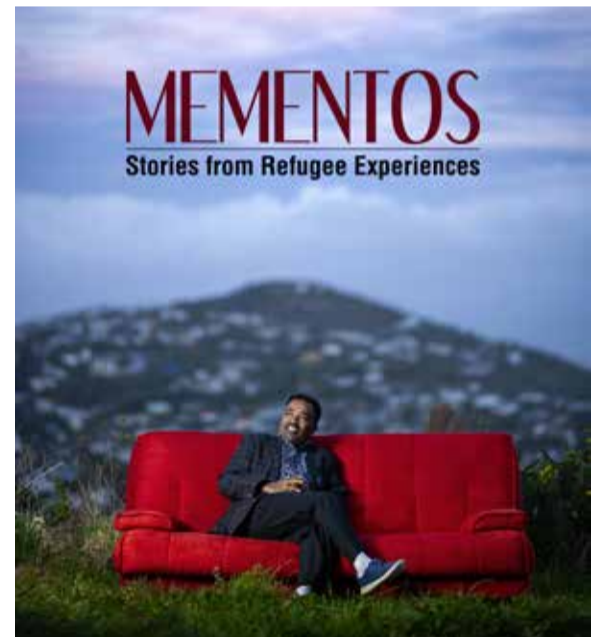
Ehsan is an independent Iranian photographer based in Wellington. He graduated with a Master of Fine Arts in Graphic Design from the University of Tehran in 2015 and has just finished his PhD in Media Studies at Victoria University of Wellington. His projects focus on social, environmental and political themes, appearing in high-profile magazines.

Welcoming Week is a chance for our community and us to show our welcoming values.

9-18 September 2022

Keep an eye on Council's website and social media to learn more about events planned for Welcoming Week.

horowhenua.govt.nz/WelcomingCommunities



Horowhenua District Council Funding



Community Grants

Do you need funding for your community organisation or a programme, project or event that will benefit and enrich the lives of our community?

Council has a range of funding opportunities for organisations operating in the Horowhenua District, open now and closing at midnight on 31 August 2022. The Creative Communities Scheme, for people and organisations wanting funding for local arts and cultural projects, closes at midnight on 12 September 2022.

Don't miss this opportunity. Apply now.

Funding awarded varies. The average grant issued is between \$2,000 and \$5,000 per application

Need more information?

horowhenua.govt.nz/grants

community@horowhenua.govt.nz

06 366 0999

Shaping and Growing Horowhenua's future together

Council has adopted the decision on Proposed Plan Change 4, approving the rezoning of land east of Levin at Tara-Ika, at its Council meeting on 29 June 2022.

"The rezoning of 420 hectares will allow for the most significant urban development in Horowhenua's history. Approximately 3,500 new houses will result, and a greater variety of housing types will be provided. There is also provision for a commercial centre, reserves, education facilities and multi-modal transport infrastructure," says David McCorkindale, Group Manager Community Vision & Delivery.

"Among the approved network of reserves and open spaces is one of particular importance that will be developed in partnership with Muaūpoko to be known as 'Maunu Wāhine' – a 2.4ha area that recognises a site of significance and their connection to the area."

The approval of Plan Change 4 is the culmination of many years of work. Council worked closely with local iwi and landowners in developing the Tara-Ika Master Plan, which was the basis of the Plan Change. Council sought informal feedback from the community before formally notifying the plan change in November 2020 and hearing submissions on the Plan Change in November and December 2021 (under the Resource Management Act 1991).

After considering submissions, further submissions from the community and a public hearing, an Independent Hearing Panel decided that Council should approve the Proposed Plan Change.

"Our district is growing rapidly as more and more people discover Horowhenua as a wonderful place to live and work. This growth brings both opportunities and challenges, and we must ensure that we can keep up with the needs of our growing community," says Council's Chief Executive Monique Davidson.

"The proposed plan change is part of the broader Horowhenua Growth Strategy 2040 and will significantly impact how our district grows and develops in the next few years. Proactively planning for growth in Horowhenua gives us the best chance

of managing how and where the growth happens. It also provides a framework to ensure good development outcomes, builds strong, resilient and inclusive neighbourhoods with more efficient and cost effective infrastructure provision." Davidson explains.

The rezoning represents an exciting phase of new development in the district that will result in several benefits to Levin and the wider Horowhenua District, including greater housing stock choices and potential employment opportunities to support our expected population growth.

Proudly Supported by
 **New Zealand Government**
 Te Kāwanatanga o Aotearoa

Funded by the Government's Covid infrastructure recovery fund.

Future development of the land is expected to have the following positive effects:

- Enable the establishment of land for at least 3,500 homes, with a greater variety of building typologies provided, including smaller houses on smaller sections and larger ones on large sections. This will enable the provision of houses to suit a wide variety of future residents with varying needs in terms of dwelling size and affordability.
- It will be supported by multi-modal transport infrastructure, with walking and cycling infrastructure and roading, encouraging all forms of transport.
- A network of parks and reserves will be created, including one developed in partnership with Muaūpoko to recognise Maunu Wāhine ('the women's place of refuge') – a site of cultural significance to Muaūpoko.
- Traditionally, Maunu Wāhine was a natural open glade in the forest surrounding the

base of a large-forked rimu tree. This refuge was located near the Waiopēhu Reserve and Te Awa a Te Tau tributary, and provided wai (drinking water), tuna (eels) and shellfish for consumption. It was known to be an established place of refuge along with one of the ancient pathways traversing the Tararua Range from East to West, where people could rest and where the study of Rongoā (traditional Māori medicine) also took place. The future development of this area as a reserve in partnership with Muaūpoko will be a formal recognition and reverence of the historic use of the land. It will provide a recreation area to be enjoyed by the district's residents and visitors. Maunu Wāhine will also meet a valuable conservation role by retaining the natural habitat of some of the district's endangered flora and fauna, including bats and snail species endemic to the Tara-Ika area.

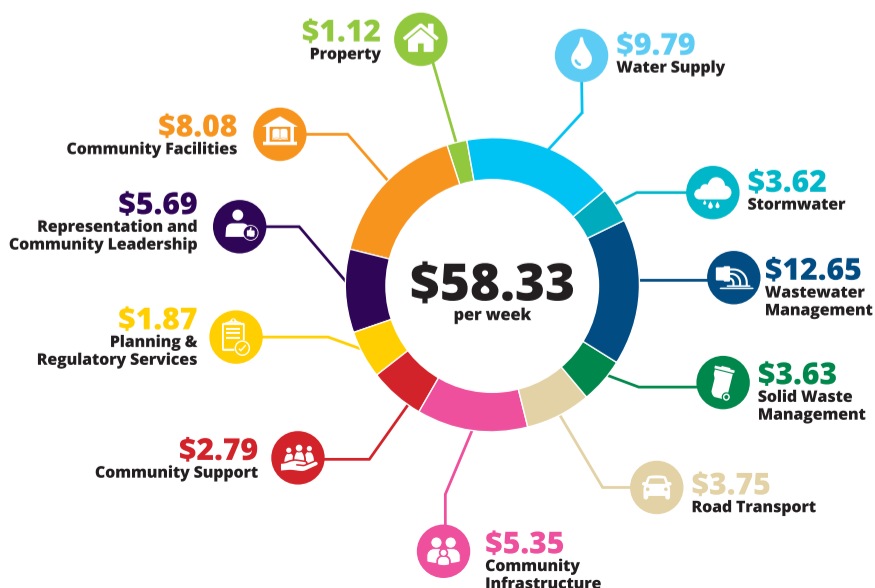
- Provision has been made to establish a variety of community infrastructure, including a primary school and commercial activities such as shops and cafes in the future. These facilities will be an asset to the community, allowing for the convenient provision of goods and services and potential employment opportunities for future residents.
- An innovative approach will be taken for stormwater disposal to help future proof the area from climate change and natural hazards, and to protect infrastructure. All stormwater for up to a 100-year storm event, including allowance for climate change, will be contained within the Tara-Ika area through a combination of plumbed-in rainwater tanks so that they can be used for non-potable uses, soakpits and stormwater treatment wetlands and basins, which will be incorporated into recreation areas as appropriate.

horowhenua.govt.nz/PPC4

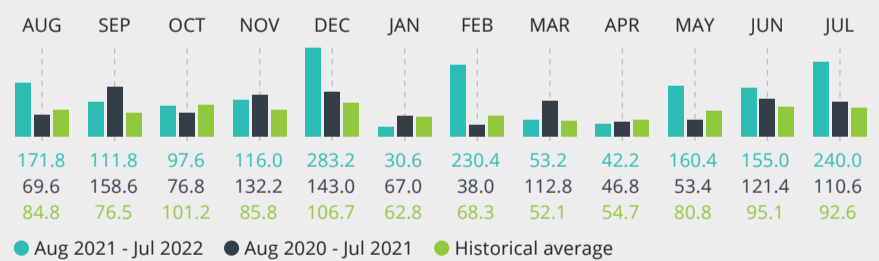
What your rates pay for

Based on an average Land Value of \$180,000 and Capital Value of \$400,000 for a Levin Residential property.

Please note that rates are charged based on the rateable value of your property. The market value for this example property is approximately \$600,000.



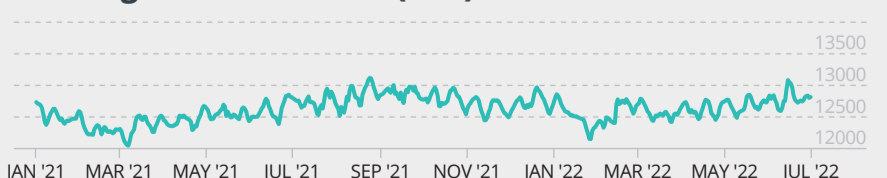
Levin rainfall data (mm)



Waitāre Beach groundwater data (mm)



Foxton groundwater data (mm)



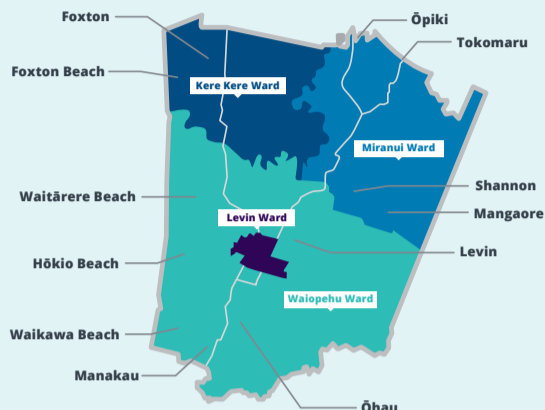
Groundwater data was not available for Waikawa Beach. Historical rainfall data was not available for the wider Horowhenua District, so we've used Levin as an example. Rainfall – The total rainfall that fell during the month. MetService observations recorded at Levin (AWS-93410).

Sources – Rainfall data <https://www.metservice.com/towns-cities/locations/levin/past-weather>. Groundwater data <https://envirodata.horizons.govt.nz/>.

Meet the Horowhenua District Council candidates

The make up of Council this triennium is one mayor, 12 councillors (10 General Ward councillors and two Māori Ward councillors) and five Te Awahou Foxton Community Board members.

Representation for the 2022 Election



Kere Kere Ward
Population per member: 2,740

Members



Miranui Ward
Population per member: 2,840

Member



Levin
Population per member: 3,160

Members



Waiopahu
Population per member: 3,435

Members



Horowhenua (Māori) Ward
Population per member: 2,530

Members

The 2022 nominated candidates are:

Mayor

Sam Jennings, Victoria Kaye-Simmons and Bernie Wanden.

Kere Kere General Ward

David Allan, Ross Brannigan, John Girling and Brett Russell.

Miranui General Ward

Robert Ketu and Paul Olsen.

Levin General Ward

Mike Barker, Clint Grimstone, Sam Jennings, Athol Kirk, Jane Masoe, Veronica Pitt, Kelly Tahiwī, Piri-Hira Josephine Tukapua, Carl Van Den Berg and Alan Young.

Waiopahu General Ward

Barry Aylward, Rogan Boyle and Jonathan Procter.

Horowhenua (Māori) Ward

Nina Hori Te Pa, Troy O'Carroll and Justin Tamihana.

Te Awahou Foxton Community Board

Trevor Chambers, Nola Fox, John Girling, David Roache, Brett Russell, Lindsay Sanson and Justin Tamihana

Key dates



Voting opens
16 September



Elections Day and voting closes 12 noon
8 October

VOTE
2022
LOCAL ELECTIONS

**WANT CHANGE?
VOTE.**

horowhenua.govt.nz/Vote

You can post your voting papers but make sure you have them in the mail by Wednesday 5 October 2022 so they get back to us in time (by 12 noon on Saturday 8 October 2022).

You can also place your voting papers in one of our voting boxes, located at our HDC Civic Building (126 Oxford Street, Levin), Te Awahou Nieuwe Stroom (92 Main Street, Foxton), and Shannon Library (Plimmer Terrace, Shannon) until 12 noon on Saturday 8 October 2022. Additional locations for voting boxes across the district are currently being identified.

We've prepared a Pre-Election Report that is politically neutral and transparent on topics ranging from our financial performance to what we've achieved, and the major challenges and exciting opportunities Horowhenua will face over the next three years. Empower yourself by reading our Pre-Election Report and learn more about the issues affecting our rohe. Electronic copies are available on our website and hard copies available at all Council service centres.

horowhenua.govt.nz/Elections

Beautify our Streets



Chorus has an opportunity for local artists to showcase their talents in the Horowhenua with the return of its Cabinet Art Programme, in partnership with Horowhenua District Council.

Chorus is working with Council again to extend its cabinet art programme in the district and is encouraging local artists to submit their designs

Five cabinets have been chosen for beautification, with two in Hōkio Beach (same site) and one cabinet

each in Shannon, Foxton and Manakau. Artists are encouraged to get their designs in before submissions close on September 19.

Chorus Community Relations Manager Jo Seddon says, "We are thrilled to be working with Horowhenua District Council again to bring more art to the streetscape. We've seen some past outstanding murals from the district and are looking forward to seeing what local artists come up with this time round."

These cabinets become works of art in the street, often telling stories about the communities in which they are located and helping to discourage tagging.

Community and Social Development Manager Michelle Rogerson says she is looking forward to seeing the artist's designs come through.

"The programme is a great opportunity for our community. Not only do we get fantastic art works in our streetscape, it also provides work for and promotion of our local artists," she said.

horowhenua.govt.nz/ChorusBoxes

Council Meetings



Finance, Audit & Risk Committee Meeting

Wednesday 31 August 2022, 4pm

Council Chambers, 126 Oxford Street, Levin.



Horowhenua District Council Meeting

Wednesday 14 September 2022, 4pm

Council Chambers, 126 Oxford Street, Levin.



Horowhenua District Council Meeting

Wednesday 28 September 2022, 4pm

Council Chambers, 126 Oxford Street, Levin.

Did you know?

You can watch meetings of Council online at:

horowhenua.govt.nz/councilmeetingslive

Want to receive Community Connection in your email inbox? Sign up online:

horowhenua.govt.nz/CommunityConnection



Council's Pre-Election Report is online and hard copies are available at all Council service centres.

horowhenua.govt.nz/Elections