



Bernie Wanden

## Message from the Mayor

**Kia ora Horowhenua,**

Today marks the day where we officially start the one month consultation period for Te Mahere Tūroa 2024-2044 – the Long Term Plan (LTP) 2024-2044.

When I reflect back to the 2021-2041 LTP, we were facing significant challenges such as the impact of COVID-19. Our growth was gathering momentum and much of our planning was focused on providing the infrastructure to manage that growth.

In three short years much has changed. The cost of living crisis that we are enduring has had a major influence on how we operate the business of Council, just as it has impacted households throughout the district.

Council knows that the 17.4% rates increase being proposed is unpalatable and much greater than we have seen in the past, but we need to have that open conversation with you to ensure that we face these challenging times head on to balance our community's aspirations, while living in our means.

It is also important to realise that 14% of the proposed rates increase is a direct result of the increase in costs we are having to meet in depreciation, interest, insurance and utilities. We are not adding anything new to this plan. We

are very conscious of the need to get back to basics, and that delivery of our core services is a priority.

We have many months and hours in workshops, discussing and debating the consultation document, and like most other districts throughout the country, are now having to face the harsh reality of a Local Government funding crisis. That reality is going to require some challenging choices for us all.

Now more than ever, Council has been looking at ways to reduce costs, without changing or drastically reducing the services residents currently receive.

We need your feedback on three key questions:

1. What services do we need for our community?
2. How should we manage our waste?
3. Sharing costs - who should pay for what?

I hope you all do take the opportunity to have your say. We do need your voice and views to help shape our district into the future, and while I cannot promise that everything you want will be agreed upon, you can be assured that we will listen and engage with you.

The LTP sets our direction for the next 20 years including what we will do, how much it will cost and how we will fund it.

Under the Local Government Act 2002 we have to develop a LTP every three years with full consultation of our community each time.

While the LTP has certainly been a focus recently, there have been some other highlights happening in the district. It was great to be part of Pasifika Day celebrations at the Levin Domain, and despite some inclement weather it was fantastic to see and enjoy the diversity in culture of our growing Pacific Peoples community.

It was also great to see the opening and blessing of the Horowhenua-Kāpiti Rugby Union administration building also on the Levin Domain last week. After many years of planning and fundraising, it has now been realised which is a great credit to all involved. It will be a real asset to the rugby fraternity and the wider community for many years to come. I particularly liked the addition of all the players names who have represented the union inscribed on the pillars of the veranda, dating back to 1899. It is a fabulous recognition.

I have also enjoyed continuing my 'Catch Up With The Mayor' sessions in Foxton and Shannon recently and despite getting a puncture in Shannon last week (thanks again Steve for helping me out) the conversations have been engaging and robust.

Look forward to catching up with you all during the LTP consultation period.

Ngā mihi

Mayor Bernie Wanden

## Long Term Plan 2024-2044 Consultation



### What is the Long Term Plan?

The Long Term Plan (LTP) sets our direction for the next 20 years – outlining our activities and providing a long term focus for decision making. It's an important mechanism which strengthens long term planning, community consultation and participation, and accountability.

This plan:

- Describes the type of District our communities have told us they want – our community outcomes.
- Details the services and key projects we plan to deliver over the next 20 years to deliver on these community outcomes.
- Outlines the cost of delivering these services and how they will be funded.

### Why have a Long Term Plan?

Under the Local Government Act 2002 we have to develop a LTP every three years with full consultation of our community each time. The LTP is also an important process which gives our community the opportunity to have a say on where we are heading so it is developed together, and to ensure our planning is robust.

### How it's developed and how you can be involved

The process for developing our LTP is outlined below. Currently, we are in the formal stage of the consultation process, where we're seeking your input into our draft LTP.

TOPIC #1

HE AHA NGĀ MOMO RATONGA  
MŌ TŌ TĀTOU HAPORI?  
WHAT SERVICES DO WE NEED  
FOR OUR COMMUNITY?



Unlike other councils who may have a port or an airport to augment their income, rates continue to be our main source of income and now make up just over 80% of our operating income.

The decision to propose a significant rate increase is not one we take lightly, especially under the current circumstances. Yet, to maintain the levels of service our community is accustomed to, we’re looking at a substantial rate increase. We’ve started re-evaluating everything from scratch, scrutinising our operational costs and exploring every opportunity to make significant reductions. We are working hard to find operational savings across the board, but to just cover cost increases like interest, depreciation, insurance and utilities, we’re looking at an average rates increase of 14%. But to fully manage the increasing costs of operating a business, while maintaining current service levels, we’re actually facing the need for an average rates increase of 23.6%.

The weight of proposing a significant rates increase was difficult for Elected Members, made worse by the ever-rising costs many households are experiencing, and our district having a disproportionately lower than average household income compared to the rest of New Zealand.

Visit [www.horowhenua.govt.nz/RatingDatabase](http://www.horowhenua.govt.nz/RatingDatabase) to calculate the impact of the preferred option on your rates.

How the impacts of other consultation questions are worked into the rates figures

The figures you get from the [horowhenua.govt.nz/RatingDatabase](http://horowhenua.govt.nz/RatingDatabase) calculator all include each of the ‘preferred options’ for questions we are consulting on about managing waste and how costs are shared. They don’t need to be added in. (By law we have to identify ‘preferred options’ and to create a draft budget, but that doesn’t mean Council has already decided on the issues.)

What that means

**OPTION 1 – you’d see no reductions or stoppages of services you receive but this would be an average 23.6% rates increase and it isn’t Council’s preferred option.**

**OPTION 2 (preferred option) – To reduce the rates increase to an average of 17.4%.**

| THE CHANGES YOU’D SEE ARE                                                                                                                                                                                                                    | SAVINGS IN \$ TERMS | SAVINGS AS % RATES |
|----------------------------------------------------------------------------------------------------------------------------------------------------------------------------------------------------------------------------------------------|---------------------|--------------------|
| Removing fund for Adverse Events/Emergencies                                                                                                                                                                                                 | \$200,000           | 0.4%               |
| Increasing fees (by higher than the average) to meet Revenue and Financing Policy target for Animal Control and other minor changes across the organisation                                                                                  | \$100,000           | 0.2%               |
| Closing Te Takeretanga o Kura-hau-pō, the Youth Space and Te Awahou Nieuwe Stroom on Sundays. <i>*Tell us if you think there might be other ways we could save the required funds across facilities, without having to close on Sundays.</i> | \$77,000            | 0.1%               |
| Increasing parking meter fees from \$1.10 to \$2.00 to increase revenue                                                                                                                                                                      | \$100,000           | 0.2%               |
| Council will sell half our Carbon Credits to lower the rates increase (included in the 17.4%)                                                                                                                                                | \$450,000           | 0.9%               |
| Increasing Trade Waste Levies                                                                                                                                                                                                                | \$214,000           | 0.4%               |
| Stop Urban berm mowing                                                                                                                                                                                                                       | \$240,000           | 0.5%               |

OPTION 3 - For an average rates increase less than 17.4%: Includes all changes in Option 2, and asks which of the following you'd support

| WHICH OF THE FOLLOWING YOU'D SUPPORT?                                                         | SAVINGS IN \$ TERMS | SAVINGS AS % RATES |
|-----------------------------------------------------------------------------------------------|---------------------|--------------------|
| Slowing down our work on implementing our affordable housing action plan                      | \$90,000            | 0.17%              |
| Reduce Council's investment in Waste Minimisation activities                                  | \$100,000           | 0.2%               |
| Reducing our investment in economic development for the district                              | \$200,000           | 0.38%              |
| Continue to partially fund recycling through debt                                             | \$625,000           | 1.2%               |
| Remove funding for community development. This includes removing community grants and funding | \$945,000           | 1.8%               |
| Reduced investment in information services                                                    | \$176,000           | 0.3%               |
| Reduce the level of rates funded depreciation                                                 | \$140,000           | 0.3%               |
| Reduce investment in roading                                                                  | \$400,000           | 0.8%               |

Note - the impacts of this option on rates for each property and on Council's borrowings will depend on the reduction in rates expected.

What are our revenue sources?



● RATES

80.2%

● FEES AND CHARGES

8.0%

● GRANTS AND SUBSIDIES

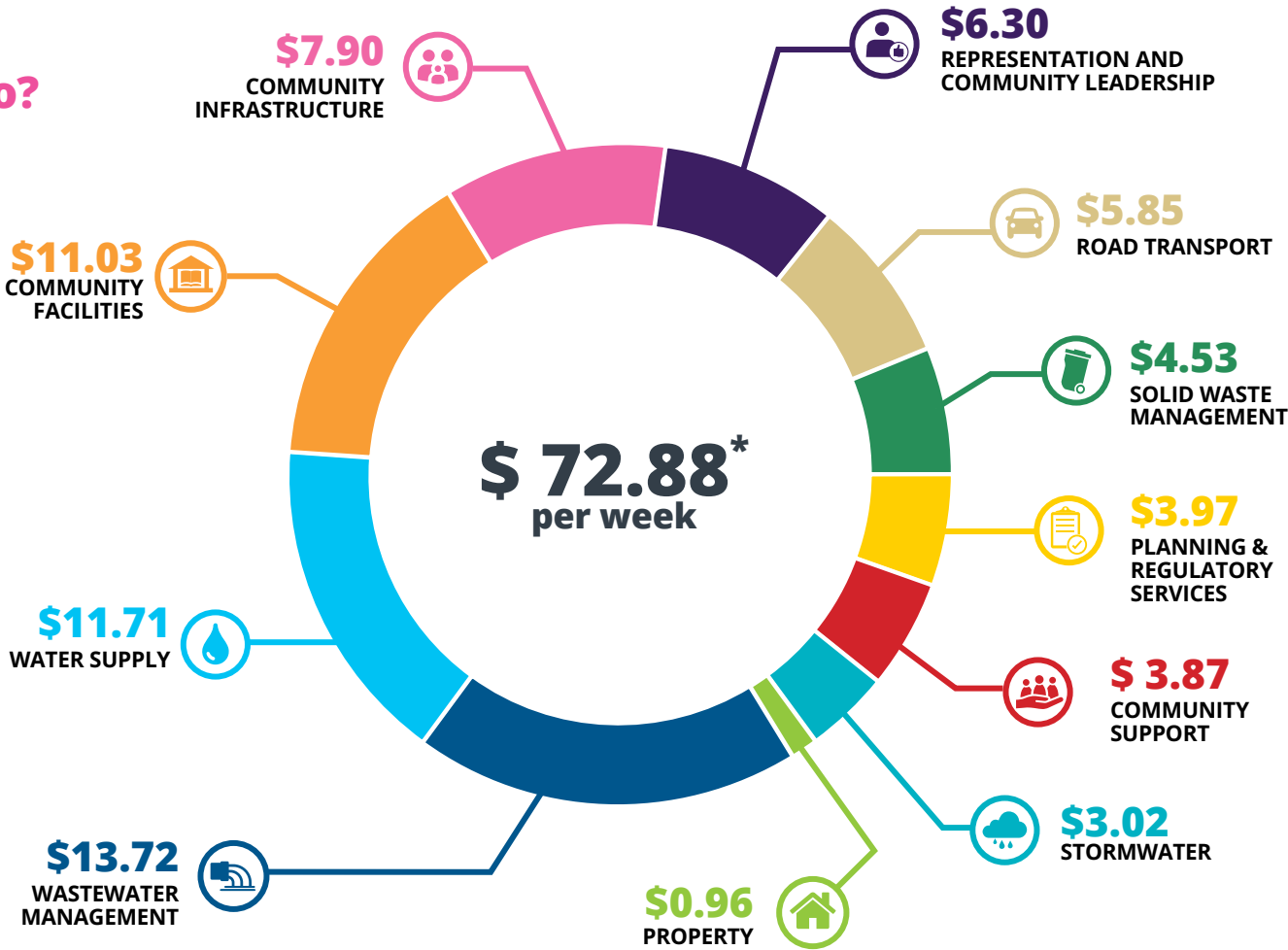
7.3%

● OTHER REVENUE\*

4.5%

\* Development Contributions and miscellaneous revenue

Where do your rates go?





TOPIC #2

TE WHAKAHAERE PARA  
MANAGING WASTE



Effective waste management for our district requires a bit of a reset. We’ve closed the Levin Landfill, but there are ongoing costs associated with managing the closed landfill as well as landfill debt. We’re proposing to share the solid waste rates including kerbside recycling in a more sustainable and equitable way.

Landfill legacy rate – Levin Landfill aftercare and landfill debt

Our closed landfills require careful ongoing monitoring and maintenance, especially the Levin Landfill, which needs monitoring and maintenance for a minimum of 30 years. To cover these costs, a ‘Landfill Legacy Rate’ is proposed to be introduced. This rate will allow us to repay the existing landfill loan of \$4.7m and fund the ongoing monitoring and maintenance of our closed landfills. We would have ideally paid for this in the past but we haven’t yet. As all residents are likely to have benefited from the landfills in some way, the cost will be evenly shared among all properties in the district, with the loan being serviced over the next 20 years.

Current solid waste rates breakdown



Proposed solid waste rates breakdown

Instead of the current Targeted Rate for the solid waste activity, we are proposing having three separate Targeted Rates.



**Landfill Legacy Rate - \$99.40**  
(Districtwide fixed charge which includes landfill aftercare and debt repayment)



**Kerbside recycling – \$144.61**  
(Fixed charge for those that receive kerbside recycling)



**Solid waste – \$96.32**  
(Districtwide fixed charge which includes the provision of waste transfer stations, mobile recycling stations and waste minimisation initiatives)

OPTION 1 (PREFERRED)  
Repay through Targeted Rate

Create a separate Targeted Rate to repay the landfill loan and pay for aftercare. Everyone will pay the same.

As residents of the district benefited from the landfills, the cost will be equally distributed across all properties. Regardless of the size, value or use of your land, everyone would pay the same amount.

OPTION 2 (STATUS QUO)  
Repay through Solid Waste Targeted Rates

Repay the landfill loan and pay for aftercare through the current solid waste Targeted Rates.

For a summary of the advantages and disadvantages of each option and the impact on cost, rates and debt visit [letskorero.horowhenua.govt.nz/LTP2024-44](https://letskorero.horowhenua.govt.nz/LTP2024-44) or scan this QR code.



Delivery of kerbside recycling services

- Questions**
- 1. How should we fund kerbside recycling services?
  - 2. Who receives it?

Currently Council provides a fortnightly kerbside recycling service to urban properties. The situation for rural properties is less straightforward. Residents who receive the rural kerbside recycling service have never fully paid for the collection and there is no defined extent (or boundary) of the rural service.

A decision needs to be made to either remove the service or determine if there is a workable and fair way to rate some or all rural residents for the service.

A further complexity is that not all rural properties receive the kerbside recycling service. Those that do were offered the service during its inception if they already had a private commercial rubbish bin collection service in place.

This service is funded through the Solid Waste Targeted Rate. This rate has three components: kerbside recycling, waste disposal operations such as the transfer station and maintenance of the closed Levin Landfill. We are splitting the rate into the three parts so it is clearer who is being charged for what and to more appropriately share the costs.

There are four options below to show how this could be managed.



For a summary of the advantages and disadvantages of each option and the impact on cost, rates and debt visit [letskorero.horowhenua.govt.nz/LTP2024-44](https://letskorero.horowhenua.govt.nz/LTP2024-44) or scan this QR code.



**OPTION 1 (STATUS QUO)**  
**Urban continues to pay, some rural properties subsidised to receive the same service**

This option proposes that we would continue with our current approach to service delivery. This means to continue the service to existing urban and rural properties. This includes only offering new properties in urban locations kerbside recycling.

Rural properties currently receiving the service, and provided it is deemed safe to do so, would continue to receive the service with no contribution towards recycling (they do however continue to pay the rural portion of the solid waste rate).

**OPTION 2 (PREFERRED)**  
**Transition to a Targeted Rate for kerbside recycling**

**Urban and Rural share the costs evenly to continue receiving recycling services.**

This option proposes to keep the waste service delivery as it is until 1 July 2026 only, recognising that this approach isn't aligned with the best practice for rating models (risks set out below). During this period, we would continue the kerbside recycling service for both existing and new properties in urban and rural areas currently receiving the service, provided it is safe to do so.

**OPTION 3**  
**Urban only kerbside recycling from 1 July 2026**

**Urban continues to pay and only Urban receives the service**

This option could only take effect from 1 July 2026 when the existing service contract ends. The services include removing the existing rural service to the 2,200 properties that currently receive the service. This option sits within the Ministry for the Environment (MfE) guidelines and allow the benefits of a new contract tailored to kerbside recycling only to urban areas.

**OPTION 4**  
**Removal of Kerbside Recycling in the district from July 2026**

This couldn't come into effect until 1 July 2026 as we have a Kerbside Refuse Collections contract that continues to mid-2026. This option is included because affordability is a key factor in providing services within the district. We anticipate our district would require the implementation of five additional Mobile Recycling Stations to manage demand. *(i.e. towns of 1000 people or more) by 1 January 2027".*

For a summary of the advantages and disadvantages of each option and the impact on cost, rates and debt visit [letskorero.horowhenua.govt.nz/LTP2024-44](https://letskorero.horowhenua.govt.nz/LTP2024-44) or scan this QR code.



**Managing and minimising waste**

The government requires all councils to produce a waste management and minimisation plan (WMMP). The plan helps us to comply with legislation and access waste levy funding from the government. As part of this consultation, we are asking you to provide your input into our draft Waste Management and Minimisation Plan 2024.



Our draft WMMP is available on [letskorero.horowhenua.govt.nz/LTP2024-44](https://letskorero.horowhenua.govt.nz/LTP2024-44) or by scanning this QR code



**TOPIC #3**  
**TE TOHA UTU – MĀ WAI NGĀ**  
**SHARING COSTS – WHO**  
**SHOULD PAY FOR WHAT?**



**As with solid waste, part of Council getting the basics right, and sharing costs fairly, we're proposing to change how we share rates for the Te Awahou Foxton Community Board, and Economic Development. We're also proposing changes to our Rates Remission Policy.**

**Te Awahou Foxton Community Board Rate**

Te Awahou Foxton Community Board (TAFCB) represents its local community and advocates to Council about local issues, including public transport and facilities such as libraries and parks.

The board has six members; five members elected by Kere Kere Ward voters, and one councillor appointed by Horowhenua District Council.

The Board receives \$188,000 in funding from Council, paid for by rates each year.

**OPTION 1 (STATUS QUO)**  
**Fund through Representation and Community Leadership Targeted Rates only**

**All Horowhenua rate payers fund TAFCB through Representation and Community Leadership Targeted Rates.**

This option involves no changes, meaning everyone in the district will continue to pay equal amounts to fund TAFCB.

**OPTION 2 (PREFERRED)**  
**Fund through new Targeted Rate**

**Foxton and Foxton Beach residents pay a Targeted Rate to fully fund the costs for TAFCB.**

This option proposes that Foxton and Foxton Beach properties (within TAFCB electorate) will pay a separate fixed Targeted Rate to fund TAFCB as they are intended to be better represented by having this in place compared to the rest of the district.

For a summary of the advantages and disadvantages of each option and the impact on cost, rates and debt visit [letskorero.horowhenua.govt.nz/LTP2024-44](https://letskorero.horowhenua.govt.nz/LTP2024-44) or scan this QR code.





Economic Development Targeted Rate

The economic development funding covers business support and advice provided to existing businesses, Iwi and Māori economic development, inward investment, training opportunities, communications, and provision of economic data.

Currently, economic development is funded entirely through the districtwide General Rate, with the costs shared across all ratepayers.

OPTION 1 (STATUS QUO)  
Fund through General Rate

Economic Development is funded through the General Rate, meaning costs are shared across everyone based on the land value of their property.

OPTION 2 (PREFERRED)  
New Economic Development Targeted Rate

Targeted Rate based on capital value from properties identified by QV as either commercial, utilities, industrial or mining, which is currently funded by General Rates.

Long Term Plan Key Dates

2024

15 March – 15 April  
Consultation on key issues.

22 – 23 May  
Council considers all information, advice and community feedback and make decisions ('Deliberations').

1 – 2 May  
Council hearings (where people speak to their submissions).

26 June  
Council adopts the Long Term Plan.

1 July  
Long Term Plan takes effect.

We look forward to hearing your thoughts and discussing these key topics with you. Our Elected Members' contact details are available online:

[horowhenua.govt.nz/Council/About-Council/Mayor-Councillors](https://horowhenua.govt.nz/Council/About-Council/Mayor-Councillors)








# ME PĒHEA RĀ KOE E WHAI KŌRERO AI

## HOW TO HAVE YOUR SAY

### Kōrero Mai

It's easy to ask questions and share your thoughts with us. **Submissions close 15 April 2024.** Council will receive the formal submissions and other feedback received, including comments from social media, ahead of Council's decision making.

### Find out more online

-  [letskorero.horowhenua.govt.nz/LTP2024-44](https://letskorero.horowhenua.govt.nz/LTP2024-44)
-  [Facebook.com/HorowhenuaDC/](https://Facebook.com/HorowhenuaDC/)
-  [Tiktok.com/@hdcouncil](https://Tiktok.com/@hdcouncil)
-  [Instagram.com/horowhenuadc](https://Instagram.com/horowhenuadc)
-  [ltip@horowhenua.govt.nz](mailto:ltip@horowhenua.govt.nz)

### In person

Speak to one of our Council Officers on 06 366 0999 or talk to Elected Members face to face at one of our events or workshops. A full list of events and workshops is available on [letskorero.horowhenua.govt.nz/LTP2024-44](https://letskorero.horowhenua.govt.nz/LTP2024-44).

Drop into a Cuppa with a Councillor session at Te Takeretanga o Kura-hau-pō, Te Awahou Nieuwe Stroom or Shannon Library to learn more about the Long Term Plan, share your views and get help to make a submission.

- Thursday 21 March 10.30am
- Thursday 28 March 10.30am
- Thursday 4 April 10.30am
- Thursday 11 April 10.30am

### Making your submission on paper

#### Submissions can be delivered to:

Horowhenua District Council Offices  
126 Oxford Street, Levin

Te Takeretanga o Kura-hau-pō  
Bath Street, Levin

Te Awahou Nieuwe Stroom  
92 Main Street, Foxton

#### Posted to:

Horowhenua District Council  
Private Bag 4002  
Levin 5540

**Submissions  
close 5pm  
on Monday  
15 April 2024**



## Easter Holiday Hours – Services & Facilities

Some Council services and facilities will be closed or have reduced hours over Easter Weekend.

### Council Civic Building

Closed on Good Friday, 29 March  
and Monday, 1 April.

### Rubbish and Recycling

Kerbside rubbish and recycling collection  
scheduled for Good Friday, 29 March will instead  
take place on Saturday, 30 March.

### Foxton Transfer Station

Good Friday, 29 March – Closed  
Easter Monday, 1 April – normal hours

### Shannon Transfer Station

Good Friday, 29 March – normal hours  
Easter Monday, 1 April – normal hours

### Levin Transfer Station

Good Friday, 29 March – Closed  
Easter Monday, 1 April – normal hours

### Te Takeretanga o Kura-hau-pō

Good Friday, 29 March – Closed  
Saturday, 30 March – Open from 10am - 4pm  
Sunday, 31 March – Closed  
Easter Monday, 1 April – Closed

### Te Awahou Nieuwe Stroom

Good Friday, 29 March – Closed  
Saturday, 30 March – Open from 10am - 4pm  
Sunday, 31 March – Open from 10am - 4pm  
Easter Monday, 1 April – Closed

### Shannon Library

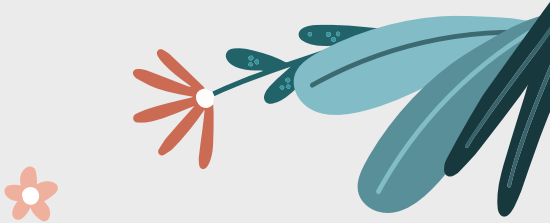
Good Friday, 29 March – Closed  
Saturday, 30 March – Open from 10am - 12noon  
Sunday, 31 March – Closed  
Easter Monday, 1 April – Closed

### Levin Aquatic Centre

Good Friday, 29 March – Closed  
Saturday, 30 March – 8am - 6pm  
Sunday, 31 March – 8am - 6pm  
Easter Monday, 1 April – 11am - 6pm

### Foxton Pools

Good Friday, 29 March – Closed  
Saturday, 30 March – 8am - 6pm  
Sunday, 31 March – 8am - 6pm  
Easter Monday, 1 April – 11am - 6pm





## Plan Change 4 (Tara-Ika)

One of the most significant and transformational urban development projects in our history is a step closer, with the Proposed Plan Change 4 (Tara-Ika Growth Area) to become operative on Tuesday 26 March 2024.

Tara-Ika, a 420 hectare block of land to the east of Levin, enables the development of more than 3,500 homes of different sizes, a commercial area, new parks and reserves and education opportunities.

It has been identified as a growth area since the Horowhenua Development Plan was prepared in 2008 and was previously zoned as Greenbelt Residential Deferred. With growth predictions rising rapidly since that time, Tara-Ika needed to be rezoned to allow greater density of development that what could occur under a Greenbelt Residential Zoning.



Making proposed plan changes operative is the final step in the plan-making process, following public submissions, a hearing, and Environment Court appeals. A now operative Plan Change 4 means that the plan provisions are fully incorporated in the District Plan and provide the framework for future development to commence.

For more information on the development visit:

[horowhenua.govt.nz/taraika](https://horowhenua.govt.nz/taraika)

## Water meters



Exciting news Horowhenua! We're stepping up our water conservation game with new leak detectors. New leak detectors (more commonly known as water meters) installed across the district will help spot leaks, save water and cut treatment costs.

The new digital water meters will be installed from March 2024 and all properties in the district will have the new fixtures by the end of 2025.

There are many benefits to installing water meters. Going by other districts which have installed similar devices, we can expect up to a 25% drop in usage when meters go in.

For more information visit:

[horowhenua.govt.nz/watermeters](https://horowhenua.govt.nz/watermeters)

## Water Conservation levels

Council draws water from rivers and groundwater under resource consents. The conditions of these consents and the demand for water set the trigger levels for Council to issue water restrictions. To ensure water demand does not exceed the available supply, restrictions may be put in place.

**Thank you for doing your bit to conserve water in Horowhenua.**

**LEVEL 2** Levin and Ōhau, Foxton and Foxton Beach are in Water Conservation Level 2 until further notice

For more information visit:

[horowhenua.govt.nz/WaterConservation](https://horowhenua.govt.nz/WaterConservation)



**Thursday 21 March, Thursday 28 March  
Thursday 4 April and Thursday 11 April**

- Te Takeretanga o Kura-hau-pō
- Te Awahou Nieuwe Stroom
- Shannon Library

**Time:** 10:30am to 12:30pm

## Council Meetings

**20 Council Public Forum**  
**Wednesday 20 March 2024, 12.15pm to 12.45pm**  
Council Chambers, 126 Oxford Street, Levin

**20 Council Meeting**  
**Wednesday 20 March 2024, 1pm**  
Council Chambers, 126 Oxford Street, Levin

**27 Community Wellbeing Committee**  
**Wednesday 27 March 2024, 10am to 12pm**  
Council Chambers, 126 Oxford Street, Levin

**8 Te Awahou Foxton Community Board Public Forum**  
**Monday 8 April, 5.30pm to 6pm**  
Foyer, Te Awahou Nieuwe Stroom, 92 Main Street, Foxton

**8 Te Awahou Foxton Community Board Meeting**  
**Monday 8 April, 6pm to 8pm**  
Ngārongo Iwikātea Room, Te Awahou Nieuwe Stroom, 92 Main Street, Foxton

**10 Community Funding & Recognition Committee**  
**Wednesday 10 April 2024, 10am to 12pm**  
Council Chambers, 126 Oxford Street, Levin

Meeting dates and times are subject to change. Please refer to [horowhenua.govt.nz/Council/Council-Meetings](https://horowhenua.govt.nz/Council/Council-Meetings) for the full meeting schedule, minutes and agendas.



### Make mulch your friend.

Good quality mulch can reduce water lost to evaporation by 70%. It also keeps the weeds down, stops run-off and adds goodness to the soil.

For more water saving tips visit:  
[horowhenua.govt.nz/WaterSavingTips](https://horowhenua.govt.nz/WaterSavingTips)

Download free app Antenno to report issues, as well as receive alerts and notifications.

[www.horowhenua.govt.nz/Antenno](https://www.horowhenua.govt.nz/Antenno)



### Leave small items out of recycling.

Items smaller than 5cm jam conveyors and can't be sorted. Keep them out of recycling and place in a rubbish bin instead.

To learn more about rubbish and recycling visit:  
[horowhenua.govt.nz/WhatGoesWhere](https://horowhenua.govt.nz/WhatGoesWhere)