

Message from the Foxtton Community Board Chairman

The Foxtton Community Board presents the Proposed Foxtton Beach Reserves Investment Plan, a programme of investment in the public reserves at Foxtton Beach.



David Roache

The Plan allocates the use of a \$1 million fund from the Foxtton Beach Freeholding Account for improvements to the reserves over a ten year period.

Through a series of community workshops earlier this year we have been provided with some fantastic ideas and aspirations from the Foxtton Beach community. The ideas proposed were plentiful and diverse and have been used to shape the Proposed Investment Plan.

The actions in the Plan are ranked on priority to identify what is to be achieved first. Actions will be primarily funded from the Foxtton Beach Freeholding Account. While Foxtton Community Board and Horowhenua District Council will work together to carry out these actions, many of these initiatives can and will require support from the community.

We want to know what you think about the proposed actions.

Tell us what you think

Take this opportunity to tell us what you think.

The Proposed Investment Plan
and the online questionnaire
can be found at
[www.horowhenua.govt.nz/
foxttonbeachreserves](http://www.horowhenua.govt.nz/foxttonbeachreserves)

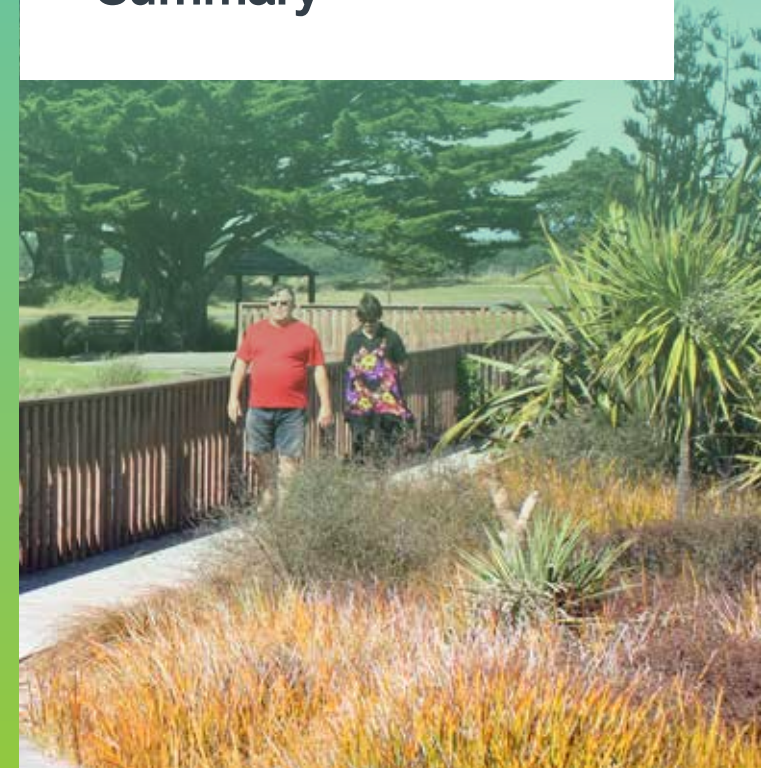
Consultation closes on Friday 3 February 2017

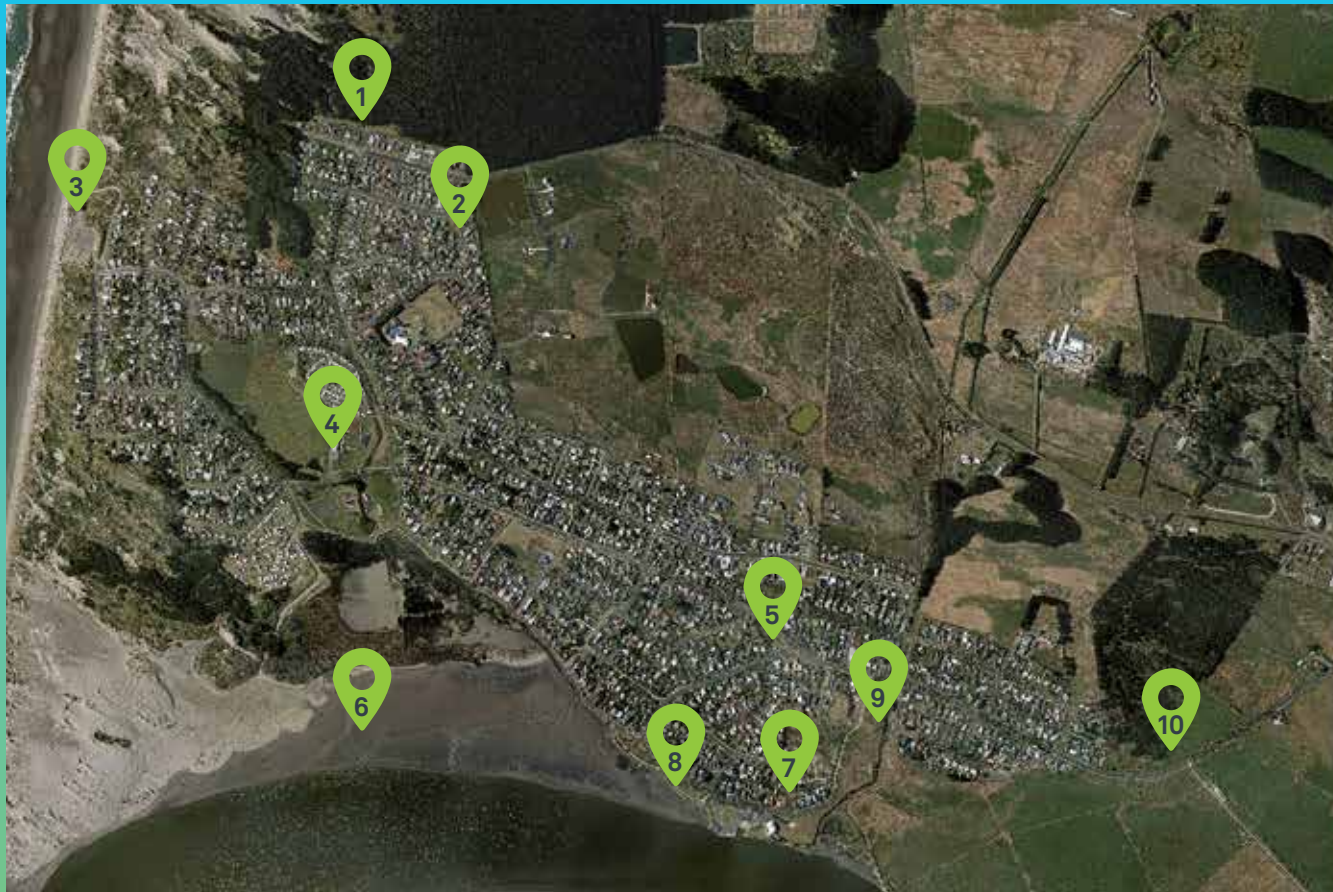
Horowhenua 
DISTRICT COUNCIL

PROPOSED Foxtton Beach Reserves Investment Plan 2016-2026 Summary

Horowhenua 
DISTRICT COUNCIL

 06 366 0999  Private Bag 4002, Levin 5540
 126 Oxford St, Levin 5510  www.horowhenua.govt.nz
 enquiries@horowhenua.govt.nz  HorowhenuaDC





Foxton Beach Reserves targeted for investment

1. Cousins Ave Reserve
2. Hennessy-Lowe Reserve
3. Foreshore Reserve
4. Holben Reserve
5. Linklater Reserve
6. Manawatu Estuary
7. Hartley Street Reserve
8. Sunset Walkway
9. Flagstaff Reserve
10. Ferry Reserve

The Plan proposes 54 actions which are prioritised based on contribution to the existing use or value of the reserve, significance of the reserve they apply to, and degree of impact from investment.

To the right we have displayed the highest and lowest ranking actions to get you thinking- have we got our priorities right? The remainder of these actions can be found in the Proposed Foxton Beach Reserves Investment Plan on our website.

Highest priority actions

	Detailed investigation of walking track to prepare working drawings for (re) construction in order to bring the track above water levels and/or install boardwalk sections where required.
	Design and construct a pump track in the southern area (as a multi-mode recreation asset), incorporated with existing skate park
Holben Reserve	Remove pine trees from western edge (Holben Parade) and estuary edge to improve visibility, connectivity and safety, while retaining wind break
	Improve quality of vegetation along western edge (community planting day)
	Commission detailed design for improvements to area surrounding Holben Pavilion, to improve usability for community events
	Design and construct a climbing fort and flying fox
Manawatu Estuary	Install bird watching hides (potentially moveable, so can be shifted according to seasons and tides) in partnership with Manawatu Estuary Trust

Lowest priority actions

All Reserves	Investigate opportunity to establish native seed bank within one of the reserves, to enable growing eco-sourced seedlings for future planting
	Undertake audit (with Recreation Services) regarding level of use/demand for rubbish bins across all reserves - identify where additional bins required and/or could be added
Ferry Reserve	Investigate demand for dedicated horse trekking reserve - if demand identified, explore Ferry Reserve as a possible location for this
Hartley Street Reserve	Clarify lease arrangements of on-site storage by Manawatu Coast Guard
	Discuss idea of alternative use of land with neighbouring property owners