



**Horowhenua**   
DISTRICT COUNCIL

**Have  
your say**  
on the Draft  
Foxton Reserves  
Management Plan

**Tell us what you think**

**Take this opportunity to tell us what you think.**

The Draft Foxton Reserves Management Plan and submission form can be found online at [www.horowhenua.govt.nz/FoxtonRMP](http://www.horowhenua.govt.nz/FoxtonRMP) or is available at Council's service centres at the Levin Office, Shannon and Foxton Libraries, and at Te Takere

**An Open Day is being held outside the front of Foxton Pool on Saturday, 10 June 2017 from 11am to 2pm for you to come along and have your say.**

**Consultation closes on Monday 3 July 2017**

**Horowhenua**  
DISTRICT COUNCIL

06 366 0999

Private Bag 4002, Levin 5540

126 Oxford St, Levin 5510

[www.horowhenua.govt.nz/FoxtonRMP](http://www.horowhenua.govt.nz/FoxtonRMP)

[reservemanagementplans@horowhenua.govt.nz](mailto:reservemanagementplans@horowhenua.govt.nz)

HorowhenuaDC

## The Draft Foxton Reserves Management Plan will guide Council Officers in looking after the Foxton reserves.

### What is a Reserve Management Plan?

Reserve management plans act as a guide for Council Officers in making day-to-day decisions as well as long term decisions on how Council's reserves are used, managed or developed.

They contain Council's vision for the reserves as well as identifying the objectives, policies and actions needed.

Council is required, under the Reserves Act 1977, to have reserve management plans in place for reserves they manage or control.

### Why is Council reviewing the Foxton Reserve Management Plans?

The reserve management plans for the centrally located Foxton reserves

were adopted in 2000. Since then these reserves have experienced change and so it is important that these plans are reviewed to reflect the current issues or opportunities for these reserve.

We have combined the management plans for the centrally located Foxton reserves into one- Draft Foxton Reserves Management Plan. This is to allow us to take a more holistic approach.

### Why should you get involved?

Development of reserve management plans provide the opportunity for the community to tell us how they wish to see the Foxton reserves used, managed and developed. Your input into the plan is essential.

## Foxton Reserves

The Draft Plan covers centrally located Foxton reserves:

### 1. Easton Park (including Pataka Park)

Situated right in the centre of Foxton. A sports ground with rugby posts and other facilities.

### 2. Flax Mill Reserve

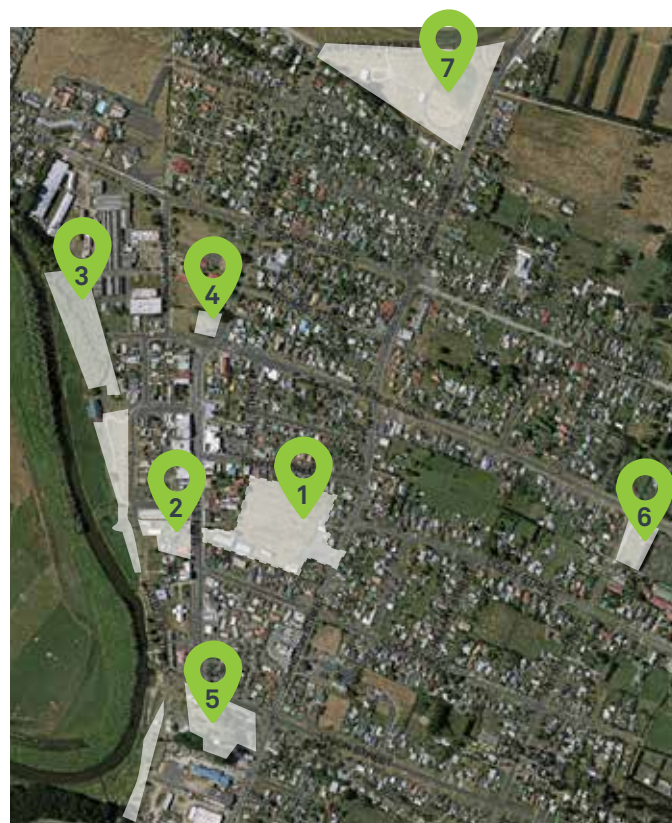
Flax Mill Reserve is considered an important civic space for the Foxton community.

### 3. Foxton River Loop Reserve

Situated along Piriharakeke and the site of the town's old port.

### 4. Ihakara Gardens

The site of Foxton's oldest cemetery and is one of the few reminders of Te Awahou Village.



### 5. Seaview Gardens

A historic garden at the south end of Foxton's Main Street, with walkways up to the landmark water tower.

### 6. Stuart Donnelly Park

A neighbourhood park that features a skate park and swings.

### 7. Victoria Park

Situated off State Highway 1 and provides a rest area for travellers. Also has a large open sports field and other facilities.

# Submission Form


## Foxton Reserves Management Plan

Horowhenua District Council is currently reviewing its Reserve Management Plans for the following reserves:


- Easton Park (including Pataka Park)
- Flax Mill Reserve
- Foxton River Loop Reserve
- Ihakara Gardens
- Seaview Gardens
- Stuart Donnelly Park
- Victoria Park


The Draft Foxton Reserves Management Plan has been prepared for the above reserves and Council is now seeking feedback/ comments in the form of submissions from the public on what they think about the Draft Plan.

### Submissions can be:

 Delivered to:  
Horowhenua District Council  
126 Oxford Street, Levin

 Posted to:  
Horowhenua District Council,  
Private Bag 4002, Levin, 5540

 Faxed to: (06) 366 0983

 Emailed to:  
reservemanagementplans@  
horowhenua.govt.nz

**Feedback must be provided to Council by no later than 5:00pm on Monday, 3 July 2017**

---

## Contact Details

Full Name: \_\_\_\_\_

Name of Organisation: (If on behalf of an Organisation) \_\_\_\_\_

Address for Service: \_\_\_\_\_

\_\_\_\_\_ Post code: \_\_\_\_\_

Telephone (Day time): \_\_\_\_\_ Mobile: \_\_\_\_\_

Email: \_\_\_\_\_

### Please fill in the sections below

## Section 1: Draft Combined Foxton Reserves Management Plan

Please tick one or more of the below boxes to confirm which of the Foxton Reserves your comments relate to.

- Easton Park       Flax Mill Reserve       Foxton River Loop Reserve       Ihakara Gardens
- Seaview Gardens       Stuart Donnelly Park       Victoria Park

---

---

---

---

---

---

---

---

