

# HOROWHENUA DISTRICT PLAN PROPOSED PLAN CHANGES 22 AND 23

September 2009

## What is a Plan Change?

A Plan Change is when a Council makes a change to the existing District Plan provisions or zoning of an area. The Council is required to follow a formal process to undertake a Plan Change. This involves publicly notifying the changes to enable submissions to be made.

## Have your say

Any member of the public can make a submission. You can make a submission in support and/or opposition to the Plan Change by writing to the Council giving details of your reasons for supporting or opposing the change. It is also possible to make a neutral submission, which provides information that you think the Council should consider when making its decision.

**The closing date for submissions on both Proposed Plan Changes below is Friday 23 October 2009 at 5.00 pm.**

## PROPOSED PLAN CHANGE 22 Outstanding Natural Features and Landscapes



### Background

Proposed Plan Change 22 seeks to identify and protect the Outstanding Natural Features, Outstanding Natural Landscapes and High Amenity Landscapes within the Horowhenua district.

### What Landscapes and Features have been identified?

#### Outstanding Natural Landscapes

- Foxton Dunefields
- Manawatu Estuary
- Tararua Ranges

#### Outstanding Natural Features

- Coastal Foredunes
- Lake Horowhenua
- Lake Papaitonga
- Hokio Stream
- Moutere Hill

#### High Amenity Landscapes

- Coastal Landscape
- Coastal Lakes Domain
- Tararua Foothills (Hill Country)
- Manakau Downlands
- Manawatu, Ohau and Tokomaru Rivers and margins
- Waikawa and Mangaore Streams and margins

The extent of these landscapes and features are shown on the map of the District which can be found on the back page of this document.

## How have these Landscapes and Features been identified?

The Council engaged a Landscape Architect to undertake a landscape assessment of the Horowhenua and identify the landscapes and features that would satisfy the legal requirements of being classified as Outstanding within the context of the Resource Management Act 1991, or that are of high amenity value.

## What do you need to understand about Plan Change 22?

This Plan Change creates restrictions for new buildings, network utilities and earthworks within the areas identified as Outstanding Natural Features, Outstanding Natural Landscapes or High Amenity Landscapes.

Proposed Plan Change 22 introduces policies and rules designed to protect the Outstanding Natural Features and Landscapes and High Amenity Landscapes within the Horowhenua. Non compliance with the proposed rules for activities in the identified areas will trigger the need for resource consent.

These rules are summarised in the table below:



Activity (as defined within the District Plan)	Outstanding Natural Landscapes & Outstanding Natural Features	Foxton Dunefields Outstanding Natural Landscape (Dune)	Foxton Dunefields Outstanding Natural Landscape (Non Dune)	High Amenity Landscapes
<b>Buildings</b>	Over three metres in height would be a Non Complying Activity	Would be a Discretionary Activity	(Except for primary production buildings which are a permitted activity) Would be a Limited Discretionary Activity	(Except for primary production buildings which are a permitted activity) Would be a Limited Discretionary Activity
<b>Network Utilities</b>	Over three metres in height would be a Non Complying Activity	Over three metres in height would be a Non Complying Activity	Over eight metres in height would be a Discretionary Activity	Over eight metres in height would be a Discretionary Activity
<b>Earthworks</b>	Would be a Non Complying Activity	Would be a Discretionary Activity	Would be a Limited Discretionary Activity	Would be a Limited Discretionary Activity



## Who will be affected by Plan Change 22?

Whilst this Plan Change protects natural landscapes and features that are enjoyed and appreciated by residents throughout the District, the Plan Change would have a direct impact on those people who own or occupy land that has been identified as an Outstanding Natural Feature, Outstanding Natural Landscape or High Amenity Landscape.

All identified properties would as a result of this Plan Change be subject to new provisions in relation to how the land can be used or developed.

### Plan Change 22 amends the following parts of the District Plan:

- Section 3 - Issues, Objectives: Natural Features and Values
- Section 19 - Rules: Rural Zone
- Section 22 – Rules: Network Utilities
- Section 24A - Assessment Criteria (new section)
- Section 25 – General Provisions: Definitions

- Schedule 4 – Outstanding Landscapes and Natural Features
- Planning Maps – Maps 32 and 33

**Plan Change 22 contains a very detailed set of provisions. If you are in any doubt about whether you are potentially affected by this Plan Change you are advised to view a full copy of Plan Change 22 and the associated Section 32 report. (For details refer below)**

# PROPOSED PLAN CHANGE 23

## Financial Contributions

### Background

Proposed Plan Change 23 seeks to remove the existing references to financial contributions within the District Plan. The adopted 2009-2019 Horowhenua Long Term Council Community Plan (LTCCP) includes the Council's Development Contribution Policy and Financial Contribution Policy. These policies confirm that Council will no longer collect financial contributions. This Plan Change addresses the inconsistency that now exists between the adopted LTCCP and the District Plan provisions that refer to the collection of financial contributions.

Removing the references to financial contributions in the District Plan would mean that financial contributions would no longer be collected as a condition of new resource consents.

### Plan Change 23 would involve changes to the following parts of the District Plan:

- Section 20 Rules: Subdivision and Development
- Rules: 14.2.15, 15.2.15, 16.2.13, 17.2.13, 18.2.13 & 19.2.10



### More Information

**Full copies of both Plan Changes can be viewed at any of the following locations during opening hours:**

Horowhenua District Council Office – 126 Oxford Street, Levin  
Foxton Service Centre – Main Street, Foxton  
Horowhenua Public Libraries – Levin, Foxton and Shannon  
Tokomaru Store – 2 Tokomaru Road, Tokomaru

The Plan Change documents can also be viewed and downloaded from the Council website [www.horowhenua.govt.nz](http://www.horowhenua.govt.nz).

Submission forms are available from the places listed previously and can also be downloaded from the Council website [www.horowhenua.govt.nz](http://www.horowhenua.govt.nz).

Council's Planning staff can provide you with additional information on making a submission and the Plan Change process. Further general information about the District Plan Change process is also available from the Ministry for the Environment [www.mfe.govt.nz/rma/public/plans/index.html](http://www.mfe.govt.nz/rma/public/plans/index.html).

**Any submission must be received at the Horowhenua District Council by Friday 23 October 2009 at 5.00pm.**

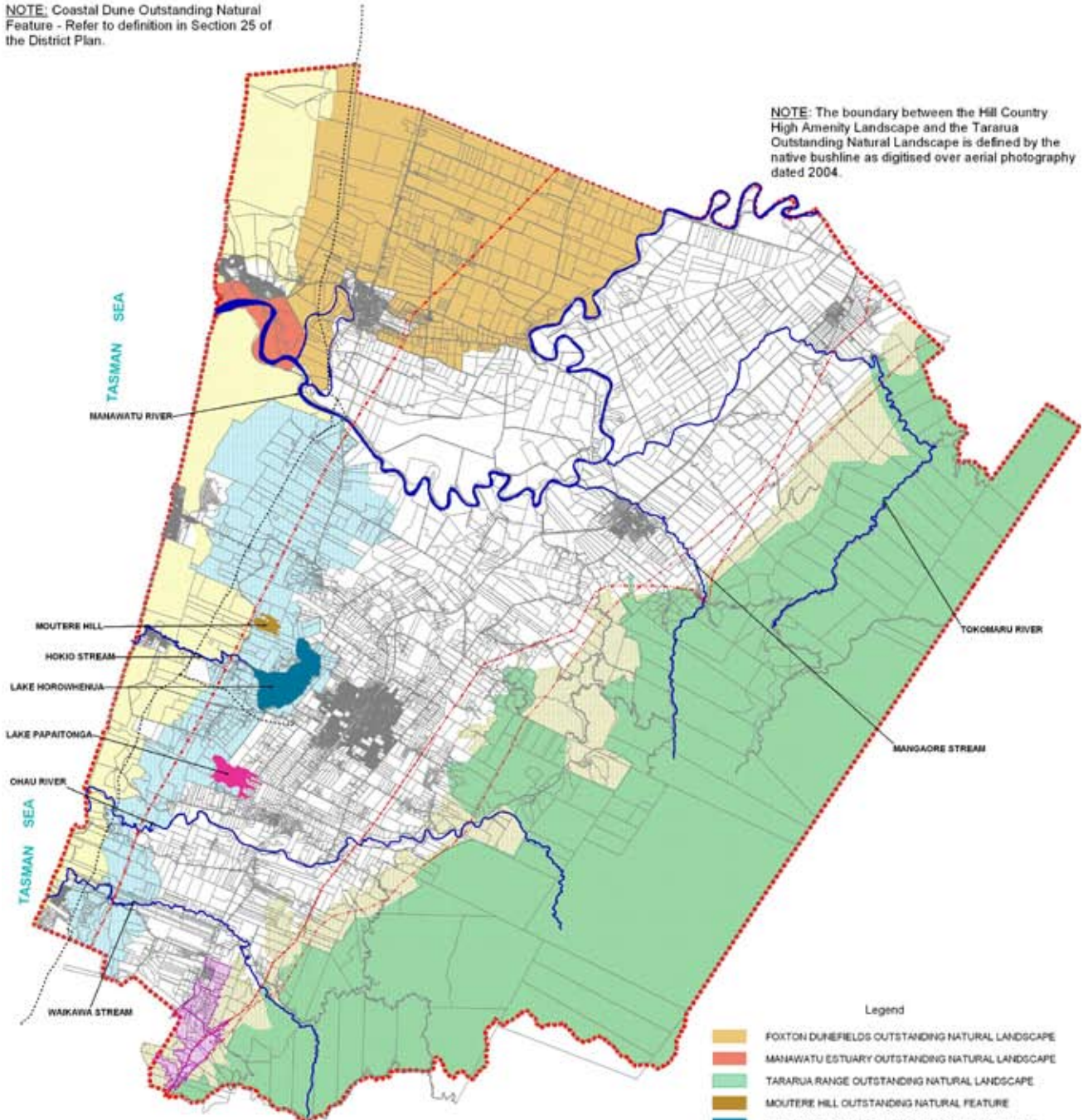
# PROPOSED PLAN CHANGE 22

## OUTSTANDING NATURAL FEATURES, OUTSTANDING NATURAL LANDSCAPES AND HIGH AMENITY LANDSCAPES



**NOTE:** Coastal Dune Outstanding Natural Feature - Refer to definition in Section 25 of the District Plan.

**NOTE:** The boundary between the Hill Country High Amenity Landscape and the Tararua Outstanding Natural Landscape is defined by the native bushline as digitised over aerial photography dated 2004.



- NOTE:**
1. Hokio Stream - Outstanding Natural Feature.
  2. Manawatu River - High Amenity Landscape.
  3. Ohau River - High Amenity Landscape.
  4. Waiwaka Stream - High Amenity Landscape.
  5. Tokomaru River - High Amenity Landscape.
  6. Mangaore Stream - High Amenity Landscape.



Notification Version 03 September 2009

- Legend**
- FOXTON DUNEFIELDS OUTSTANDING NATURAL LANDSCAPE
  - MANAWATU ESTUARY OUTSTANDING NATURAL LANDSCAPE
  - TARARUA RANGE OUTSTANDING NATURAL LANDSCAPE
  - MOUTERE HILL OUTSTANDING NATURAL FEATURE
  - LAKE HOROWHENUA OUTSTANDING NATURAL FEATURE
  - LAKE PAPAITONGA OUTSTANDING NATURAL FEATURE
  - COASTAL ENVIRONMENT HIGH AMENITY LANDSCAPE
  - COASTAL LAKES HIGH AMENITY LANDSCAPE
  - HILL COUNTRY HIGH AMENITY LANDSCAPE
  - MANAKAU DOWNLANDS HIGH AMENITY LANDSCAPE
  - RIVERS(INCL. 50M MARGIN FROM CENTRELINE)
  - POWER TRANSMISSION LINES
  - GAS TRANSMISSION PIPELINE
  - A** LABELS OF OUTSTANDING NATURAL FEATURES
  - PROPERTIES
  - DISTRICT BOUNDARY