



HOROWHENUA DISTRICT COUNCIL

**Delivering quality service
to our customers**

Contact Details:

If you require any further
information please:

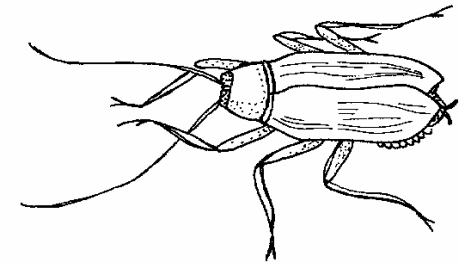
**Telephone for advice or
an appointment:
Phone: 06 3660999**

**Visit us at:
Horowhenua District Council
126-148 Oxford Street
LEVIN**

**Write to:
Horowhenua District Council
Private Bag 4002
LEVIN**

PEST CONTROL

**A Guide to Controlling Unwanted
Animals and Insects**



Tel: (06) 3660999

Remember: Rodents are more likely to go for bait if there are no other sources of food available.

If you decide to remove a wasp nest yourself, **Remember** that stinging insects are less active when it is cool, so wait until the evening or early morning to ensure you remove as many of the insects as possible.

Consider Your Neighbours:

If you have a pest problem your neighbours could too! Pets can travel for considerable distances in search of food, water and shelter. If you are having a problem with pests talk to your neighbours to see if you can tackle the problem together—two heads are better than one!

I Need Help!

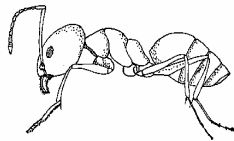
Generally when pests are on private property they are the owner's responsibility to eradicate them.

Don't panic! All these pests are naturally occurring and it is not unusual to see seasonal variation in population numbers as temperatures and food sources change. For example, wasps and ants in the summer as they forage for food, and rodents in the winter in search for warm, dry shelter.

If you find that you are unable to remove the pests from your property or it is not safe for you to do it yourself, you can engage a professional exterminator. Check under Pest Control in either the Yellow Pages or the Horowhenua Local Directory for a listing.

If unsanitary conditions are encouraging insects and rodents, contact the **Environmental Health**

Officer at the Horowhenua District Council to discuss your concerns.



PEST CONTROL

Rats and Mice:

The Facts:

- Rats and mice are generally nocturnal animals and are rarely seen during the day except when in very high numbers.
- Mice tend to seek shelter and form nests inside buildings where it is warm and dry. They rarely stray more than a few metres from their nests sites and prefer to feed on grains, cereals and other dry goods.
- Rats generally nest outside, under buildings, in piles of debris or in overgrown parts of the section. They tend to range a little further than mice and will feed on almost anything including meat, fish and rubbish.
- Both rats and mice are incredibly agile and can climb most vertical surfaces, leap across wide spaces and squeeze through very small gaps. They are also good swimmers.

The Problem:

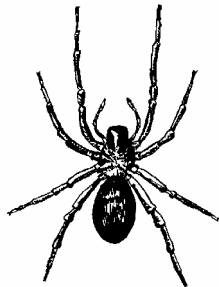
Along with the physical damage they cause to our belongings, food stores and dwellings, rodents are also responsible for spreading disease. They do this either:

- Directly, by contaminating food and belongings with their urine or droppings, (Salmonellosis and Leptospirosis).
- Indirectly, via their fleas and mites (the Plague or Typhus)

How Do I Know If There Are Rodents On My Property?

You need to look for droppings, gnaw marks, smear marks and tracks. You may also hear rats in your walls and ceilings should they invade your house.

Remember to talk to your neighbours, if rats are present in the area, it is much more effective to work together to control them.



Wasps:

The Facts:

- For most of the year the wasp is an ally, as it feeds on other insects while raising young in the nest. Only in late summer and autumn when it turns to feed on fruits and sweet substances, does it become a nuisance and potential problem.
- Wasps construct their nests in the ground, in trees, under houses or in roof spaces.



The Problem:

Many wasps are scavengers and will forage for a wide variety of foods including fruits, ice cream, jelly and meat products. This brings them into contact with humans and increases the chances of people being stung.

Ants:

Ants do serve an important role in the ecosystem, but as their colonies grow and multiply treatment may be necessary. They become particularly troublesome when they come indoors and get into foods. Once a few ants arrive hundreds can quickly follow.

Ants come indoors either looking for food and water or to find shelter.

Dead ants can cause an unusual smell, making it easier for you to locate them.

Mosquitoes:

- New Zealand has 15 species of mosquitoes.
- Many of them have the potential to carry dangerous diseases.
- They live and breed in standing water.
- Mosquitoes are most active at dawn and dusk.
- The best method of reducing mosquito numbers is to reduce their breeding sites.

How Can I Help Control Pests?

Deprive Pests' Entry:

- Seal gaps around doors, windows and pipes.
- Repair holes in wall cladding.
- Repair broken windows.
- Cover air vents with fine mesh.

Deprive Pests of Food and Water:

- Remove food scraps.
- Secure rubbish bins with lids.
- Remove old tyres, pots etc that collect rainwater.
- Fix dripping taps and ensure drains operate correctly.

Deprive Pests' Harbourage:

- Ensure your property is clear of potential nesting sites such as unused boxes, and overgrown vegetation.
- Bury compost in the garden.
- Store firewood on bricks clear of the ground.
- Clear blocked waterways.

Bait Stations:

Poisoned baits can be purchased from hardware stores and supermarkets. Follow the instructions on the bait label and remember to be extremely careful and wash your hands thoroughly after handling it.

- Place bait in areas where there is known activity.
- Ensure bait is protected from children, animals, birds and the weather. This can be achieved with a bait box or lengths of piping.
- Leave bait for at least 2 weeks after the pests appear to have gone.

Trapping:

If you are worried about using poisoned bait, traps are another option and generally work